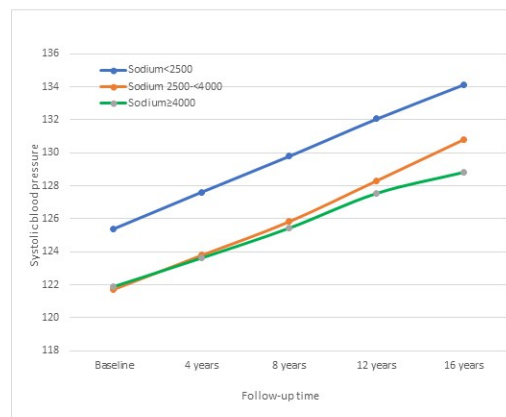


Low-sodium diet might not lower blood pressure

April 25 2017



This graph shows systolic blood pressure according to sodium intake among individuals not taking blood pressure lowering medication. Results were adjusted for sex, age, education, height, weight, physical activity, cigarettes per day and alcohol intake. Credit: Lynn L. Moore, Boston University School of Medicine

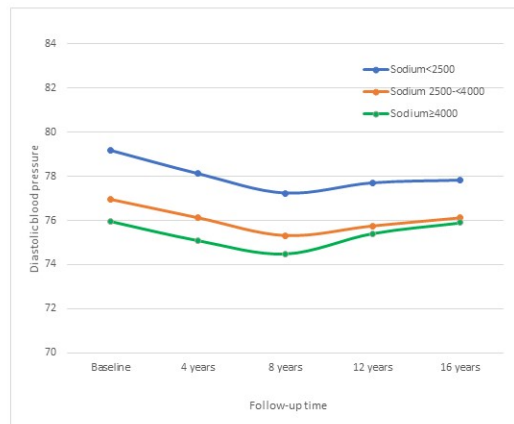
A new study that followed more than 2,600 men and women for 16 years found that consuming less sodium wasn't associated with lower blood pressure. The new findings call into question the sodium limits

recommended by the current Dietary Guidelines for Americans.

Lynn L. Moore, DSc, associate professor of medicine at Boston University School of Medicine, will present the new research at the American Society for Nutrition Scientific Sessions and annual meeting during the Experimental Biology 2017 meeting, to be held April 22-26 in Chicago.

"We saw no evidence that a diet lower in sodium had any long-term beneficial effects on blood [pressure](#)," said Moore. "Our findings add to growing evidence that current recommendations for sodium intake may be misguided."

The 2015-2020 Dietary Guidelines for Americans recommends limiting sodium intake to 2,300 grams a day for healthy people. For the study, the researchers followed 2,632 men and women ages 30 to 64 years old who were part of the Framingham Offspring Study. The participants had [normal blood pressure](#) at the study's start. However, over the next 16 years, the researchers found that the study participants who consumed less than 2500 milligrams of sodium a day had higher blood pressure than participants who consumed higher amounts of sodium.



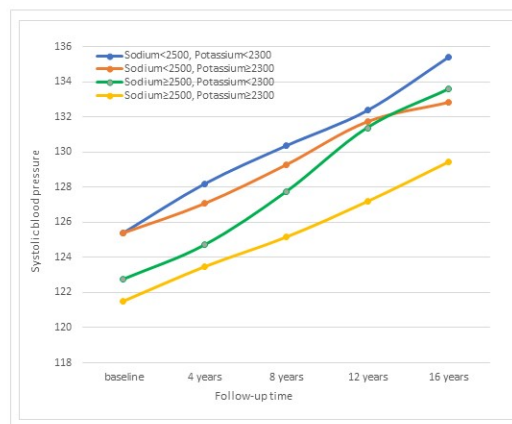
This graph shows diastolic blood pressure according to sodium intake among individuals not taking blood pressure lowering medication. Results were adjusted for sex, age, education, height, weight, physical activity, cigarettes per day and alcohol intake. Credit: Lynn L. Moore, Boston University School of Medicine

Other large studies published in the past few years have found what researchers call a J-shaped relationship between sodium and cardiovascular risk—that means people with low-sodium diets (as recommended by the Dietary Guidelines for Americans) and people with a very high sodium intake (above the usual intake of the average American) had higher risks of heart disease. Those with the lowest risk had sodium intakes in the middle, which is the range consumed by most Americans.

"Our new results support these other studies that have questioned the wisdom of low dietary sodium intakes in the general population," said

Moore.

The researchers also found that people in the study who had higher intakes of potassium, calcium and magnesium exhibited [lower blood pressure](#) over the long term. In Framingham, people with higher combined intakes of sodium (3717 milligrams per day on average) and potassium (3211 milligrams per day on average) had the lowest blood pressure.



The graph shows systolic blood pressure according to the combined intakes of sodium and potassium among individuals not taking blood pressure lowering medication. Results were adjusted for sex, age, education, height, weight, physical activity, cigarettes per day and alcohol intake. Credit: Lynn L. Moore, Boston University School of Medicine

"This study and others point to the importance of higher potassium intakes, in particular, on [blood](#) pressure and probably cardiovascular outcomes as well," said Moore. "I hope that this research will help refocus the current Dietary Guidelines for Americans on the importance of increasing intakes of foods rich in potassium, calcium and magnesium for the purpose of maintaining a healthy [blood pressure](#)."

Moore says that there is likely a subset of people sensitive to salt who would benefit from lowering [sodium intake](#), but more research is needed to develop easier methods to screen for salt sensitivity and to determine appropriate guidelines for intakes of [sodium](#) and potassium in this salt-sensitive group of people.

More information: Low Sodium Intakes are Not Associated with Lower Blood Pressure Levels among Framingham Offspring Study Adults, app.core-apps.com/eb2017/abstr...3af8e0989e14822abae7

Provided by Experimental Biology 2017

Citation: Low-sodium diet might not lower blood pressure (2017, April 25) retrieved 5 May 2024 from <https://medicalxpress.com/news/2017-04-low-sodium-diet-blood-pressure.html>

This document is subject to copyright. Apart from any fair dealing for the purpose of private study or research, no part may be reproduced without the written permission. The content is provided for information purposes only.