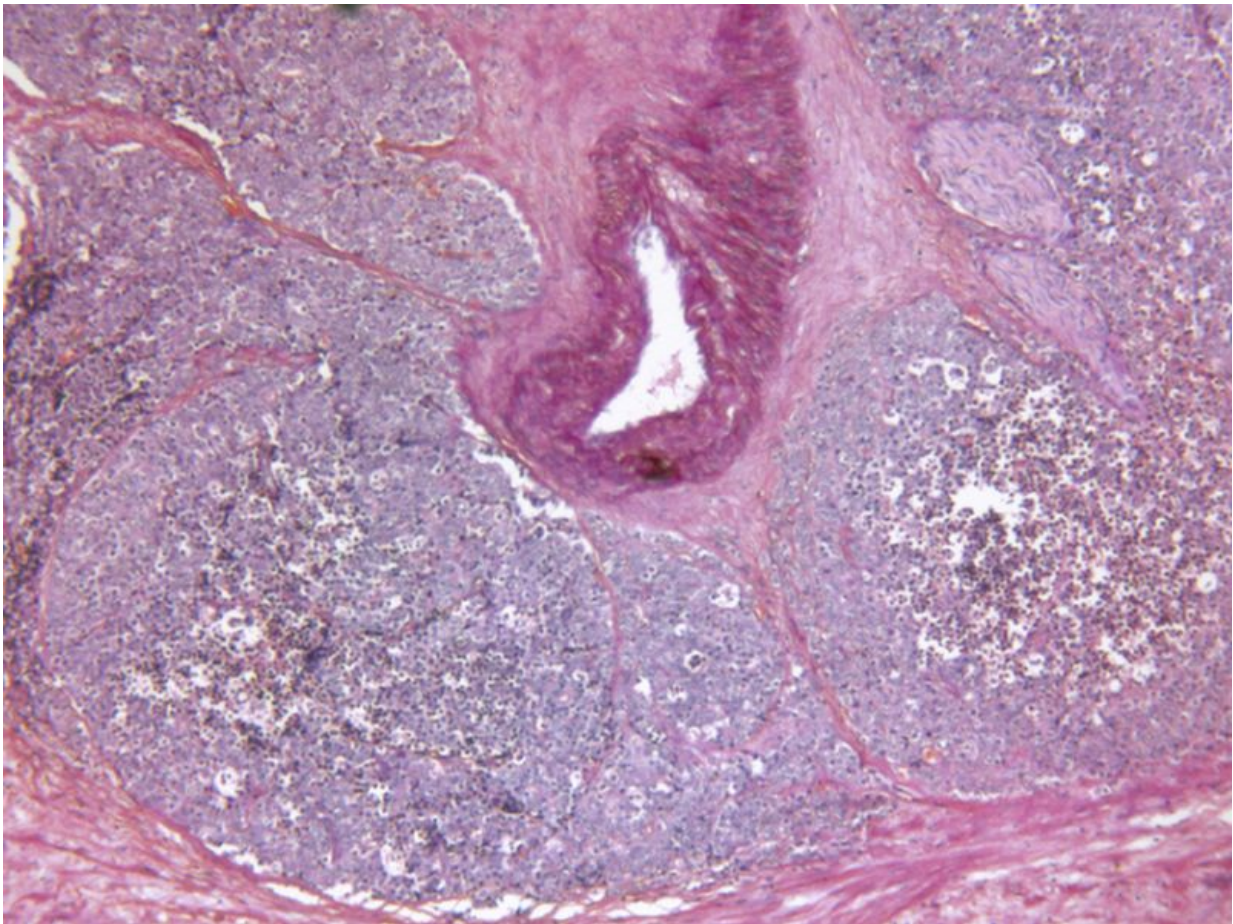


# Increase in prostate needle biopsy-linked infection in N.Y.

April 18 2017

---



(HealthDay)—Infectious complications after prostate needle biopsy

increased from 2011 to 2014 across New York State, according to a study published in the April issue of *The Journal of Urology*.

Using the New York Statewide Planning and Research Cooperative System, Joshua A. Halpern, M.D., from the Weill Cornell Medical College in New York City, and colleagues identified prostate needle biopsies performed between 2011 and 2014 via the transrectal and transperineal approach (9,472 and 421 patients, respectively).

The researchers found that with time there was a decrease in ambulatory use of prostate needle biopsy (P

"With higher complications using the transrectal approach and minimal utilization of targeted antibiotic prophylaxis, further efforts should focus on the evaluation and implementation of these strategies to reduce post-prostate [needle](#) biopsy complications nationally," the authors write.

**More information:** [Abstract](#)

[Full Text](#)

[Editorial \(subscription or payment may be required\)](#)

Copyright © 2017 [HealthDay](#). All rights reserved.

Citation: Increase in prostate needle biopsy-linked infection in N.Y. (2017, April 18) retrieved 2 May 2024 from <https://medicalxpress.com/news/2017-04-prostate-needle-biopsy-linked-infection-ny.html>

This document is subject to copyright. Apart from any fair dealing for the purpose of private study or research, no part may be reproduced without the written permission. The content is provided for information purposes only.
---