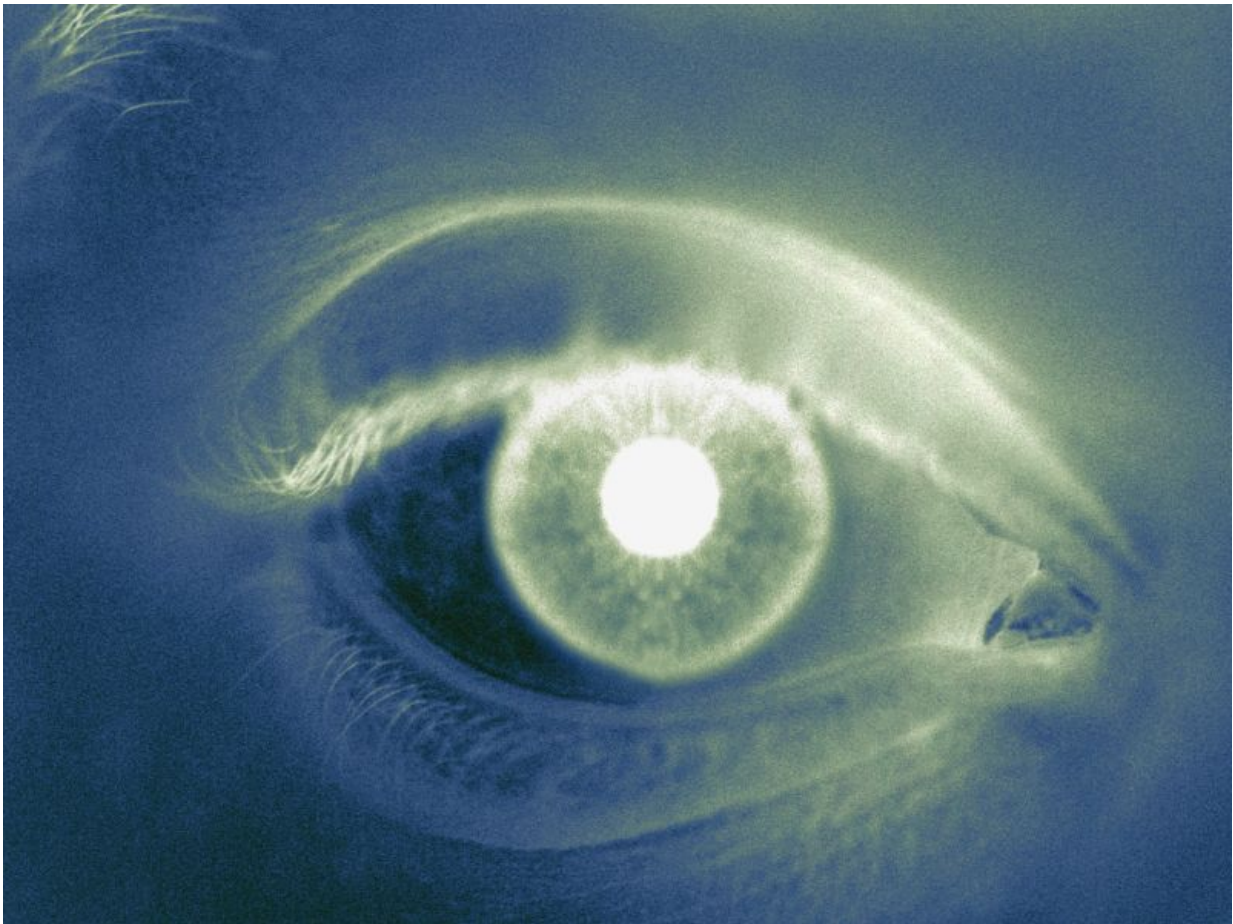


# Lasting damage after monolateral acute primary angle closure

July 24 2017

---



(HealthDay)—Significantly greater structural and functional damage

occurs in eyes with monolateral acute primary angle closure (APAC) compared with fellow eyes, and more than half of fellow eyes develop chronic angle closure glaucoma (CACG), according to research published online July 19 in *Clinical & Experimental Ophthalmology*.

In an effort to report the morphological and functional outcomes for CACG eyes following a monolateral APAC attack, Antonio Maria Fea, M.D., Ph.D., from the University of Turin in Italy, and colleagues conducted an observational retrospective case series involving [57 patients](#) (114 eyes) who underwent long-term follow-up analysis. Patients underwent ophthalmic assessment at more than five years following the attack (mean follow-up,  $5.86 \pm 1.19$  years).

The researchers found that, compared with fellow eyes, APAC eyes had significantly greater damage in structural and functional terms (both P

"Our study prompts ophthalmologists to closely follow up patients after an APAC attack to prevent potential glaucoma [damage](#) in both APAC and fellow eye," the authors write

**More information:** [Abstract](#)  
[Full Text \(subscription or payment may be required\)](#)

Copyright © 2017 [HealthDay](#). All rights reserved.

Citation: Lasting damage after monolateral acute primary angle closure (2017, July 24) retrieved 17 April 2024 from

<https://medicalxpress.com/news/2017-07-monolateral-acute-primary-angle-closure.html>

<p>This document is subject to copyright. Apart from any fair dealing for the purpose of private study or research, no part may be reproduced without the written permission. The content is provided for information purposes only.</p>
--