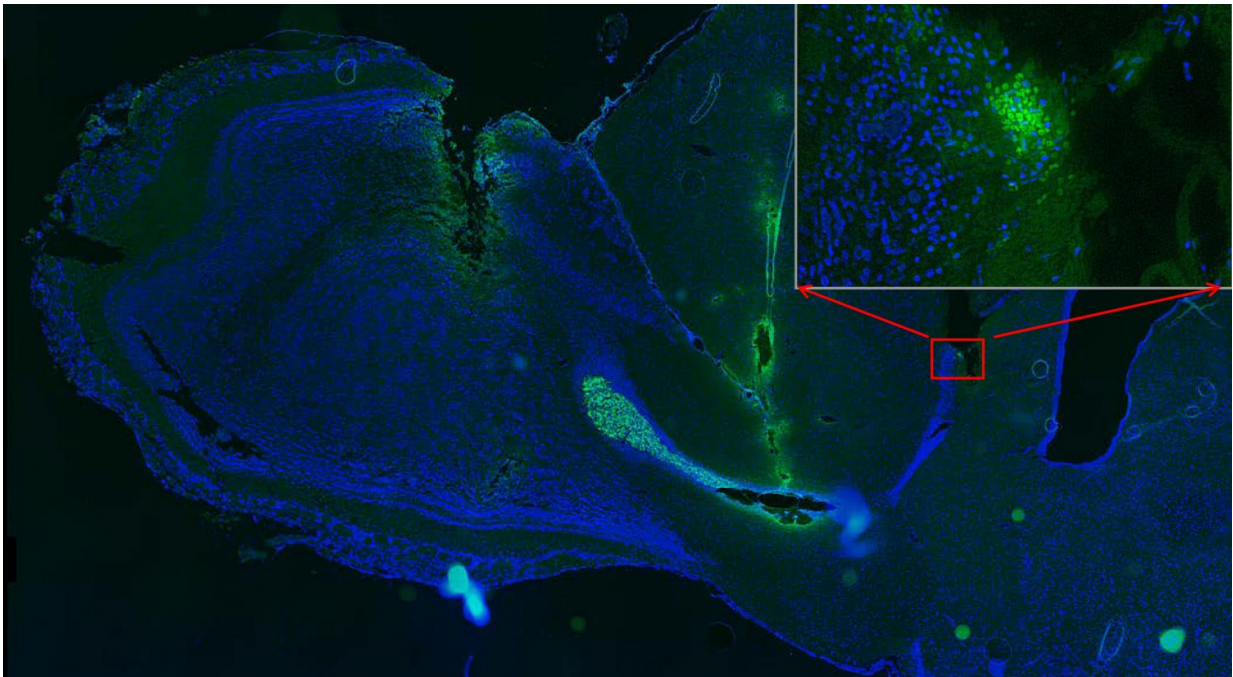


Neural stem cells steered by electric fields in rat brain

July 11 2017



Transplants of neural stem cells might be used to treat brain injuries, but how to get them to the right location? UC Davis researcher Min Zhao and Junfeng Feng, a neurosurgeon at Ren Ji Hospital, Shanghai, showed that they can steer transplanted stem cells (green, in inset on right) to one part of a rat's brain using electrical fields. Credit: Junfeng Feng

Electric fields can be used to guide neural stem cells transplanted into the brain towards a specific location. The research, published July 11 in

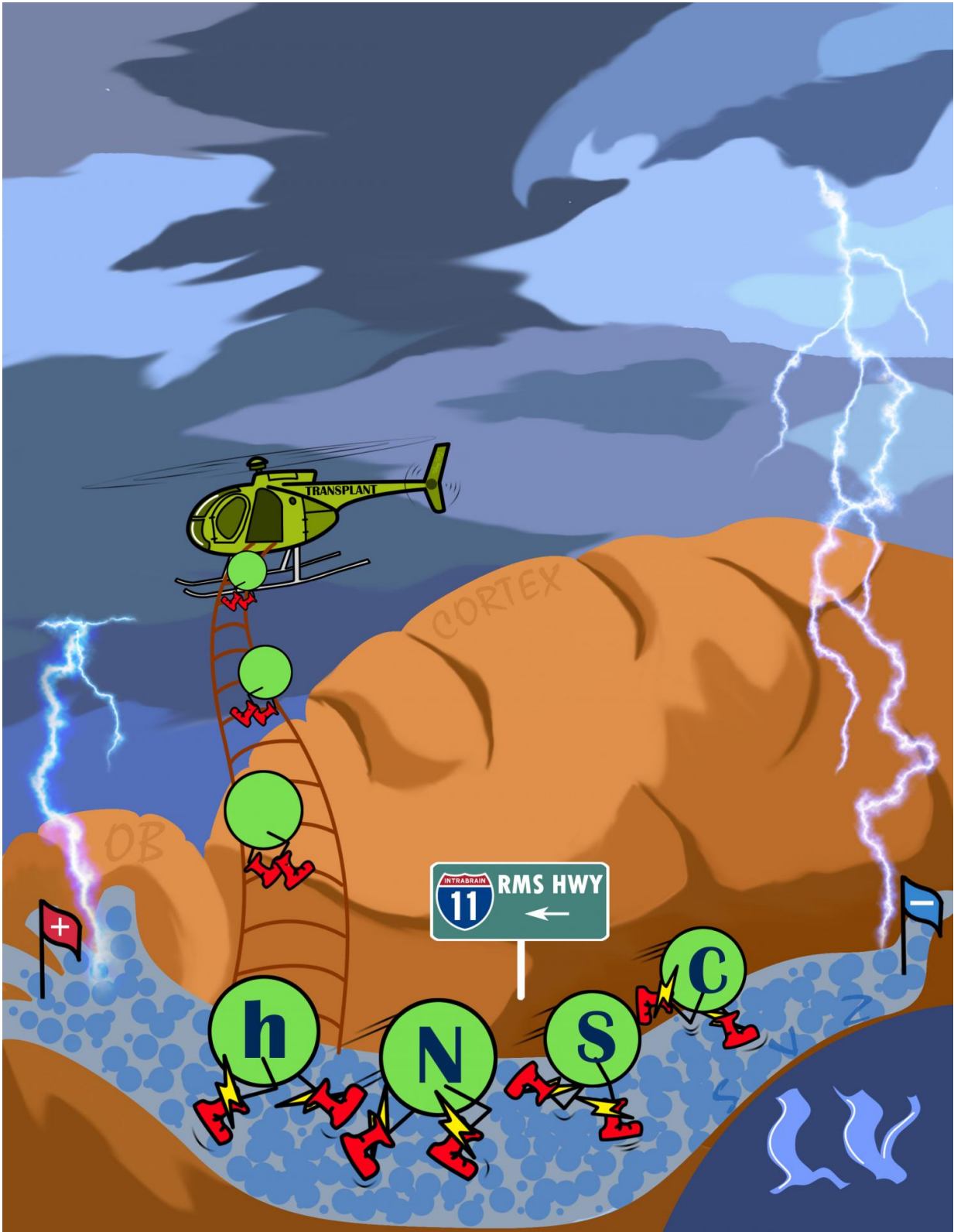
the journal *Stem Cell Reports*, opens possibilities for effectively guiding stem cells to repair brain damage.

Professor Min Zhao at the University of California, Davis School of Medicine's Institute for Regenerative Cures studies how electric fields can guide wound healing. Damaged tissues generate weak electric fields, and Zhao's research has shown how these electric fields can attract cells into wounds to heal them.

"One unmet need in regenerative medicine is how to effectively and safely mobilize and guide stem cells to migrate to lesion sites for repair," Zhao said. "Inefficient migration of those cells to lesions is a significant roadblock to developing effective clinical applications."

Dr. Junfeng Feng, a neurosurgeon at Ren Ji Hospital, Shanghai Jiao Tong University and Shanghai Institute of Head Trauma, visited Zhao's lab to study how electric fields might guide stem cells implanted in the [brain](#).

Natural neural stem cells—cells that can develop into other brain tissues—are found deep in the brain, in the subventricular zone and hippocampus. To repair damage to the outer layers of the brain (the cortex), they have to migrate some distance, especially in the large human brain. Transplanted stem cells might also have to migrate some way to find an area of damage.



This cartoon shows transplanted human neural stem cells migrating "upstream"

against the rostral migration stream of the rat brain. This stream should carry cells from the ventricular zone to the olfactory bulb on the left. By using an electric field, researchers at UC Davis could make the cells migrate to the lateral ventricle on the left instead. Credit: Weiji Weng

Stem Cells Move "Upstream"

Feng and Zhao developed a model of [stem cell transplants](#) in rats. They placed human [neural stem cells](#) in the rostral migration stream - a pathway in the rat brain that carries cells towards the olfactory bulb, which governs the animal's sense of smell. Cells move along this pathway partly carried by the flow of cerebrospinal fluid and partly guided by chemical signals.

By applying an electric field within the rat's brain, they found that they could get the transplanted stem [cells](#) to swim "upstream" against the fluid flow and natural cues and head for other locations within the brain.

The [transplanted stem cells](#) were still in their new locations weeks or months after treatment.

"Electrical mobilization and guidance of [stem cells](#) in the brain therefore provides a potential approach to facilitate [stem cell therapies](#) for brain diseases, stroke and injuries," Zhao said.

More information: Jun-Feng Feng et al, Electrical Guidance of Human Stem Cells in the Rat Brain, *Stem Cell Reports* (2017). [DOI: 10.1016/j.stemcr.2017.05.035](https://doi.org/10.1016/j.stemcr.2017.05.035)

Provided by UC Davis

Citation: Neural stem cells steered by electric fields in rat brain (2017, July 11) retrieved 24 April 2024 from <https://medicalxpress.com/news/2017-07-neural-stem-cells-electric-fields.html>

This document is subject to copyright. Apart from any fair dealing for the purpose of private study or research, no part may be reproduced without the written permission. The content is provided for information purposes only.