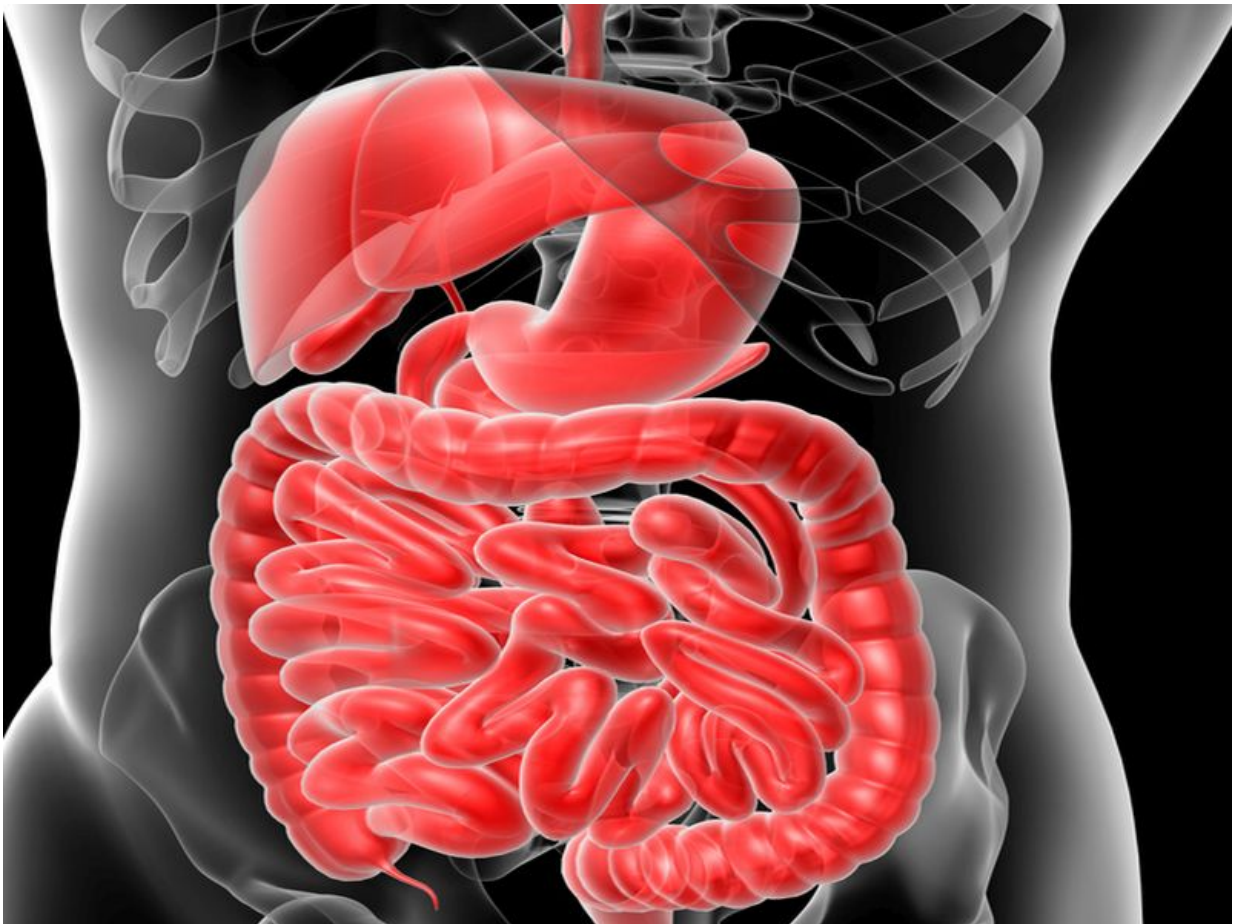


PD-L1 mainly expressed in metastatic CRC lesions

September 19 2017



(HealthDay)—Programmed death-ligand 1 (PD-L1) is primarily

expressed in metastatic colorectal cancer (CRC) lesions, according to a study published online Aug. 29 in the *Journal of Digestive Diseases*.

Huanbin Wang, from the Shanghai Jiao Tong University, and colleagues compared PD-L1 expression in primary and metastatic CRC lesions.

The researchers found that PD-L1 expression was significantly more prevalent in metastatic CRCs than in primary tumors, and the PD-L1 expression in primary CRC may not represent the tumors that spread. Overall, 81.8 percent of metastatic CRCs had positive expression of PD-L1, compared with 40.9 percent of primary CRCs ($P = 0.012$). PD-L1 expression frequently increased during the metastatic process when comparing primary and metastatic lesions of the same patients. However, there was rarely a decrease in PD-L1 expression in metastatic lesions. In both metastatic and primary CRCs, there was intratumoral heterogeneity expression of PD-L1 (28.6 and 33.3 percent, respectively).

"These findings suggest that PD-L1 [expression](#) in metastatic CRC should be considered as an independent factor while evaluating the suitability of patients for immunotherapy," the authors write.

More information: [Abstract](#)
[Full Text \(subscription or payment may be required\)](#)

Copyright © 2017 [HealthDay](#). All rights reserved.

Citation: PD-L1 mainly expressed in metastatic CRC lesions (2017, September 19) retrieved 11 May 2024 from <https://medicalxpress.com/news/2017-09-pd-l1-metastatic-crc-lesions.html>

<p>This document is subject to copyright. Apart from any fair dealing for the purpose of private study or research, no part may be reproduced without the written permission. The content is provided for information purposes only.</p>
--