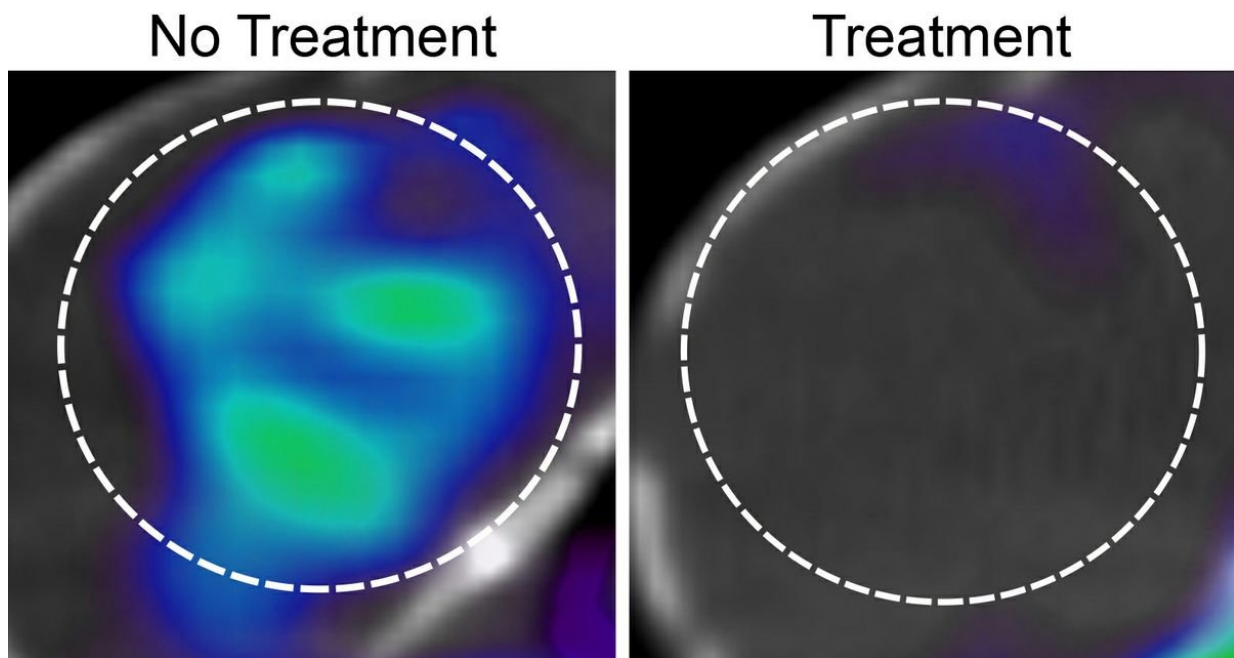


# Combination treatment targeting glucose in advanced brain cancer shows promising results in preclinical study

October 10 2017

---



Positron emission tomography images show glioblastoma tumor glucose uptake before, left, and after treatment in mice. Credit: UCLA Health

UCLA scientists have discovered a potential combination treatment for glioblastoma, the deadliest form of brain cancer in adults. The three-year study led by David Nathanson, a member of UCLA's Jonsson Comprehensive Cancer Center, found that the drug combination tested

in mice disrupts and exploits glucose intake, essentially cutting off the tumor's nutrients and energy supply. This treatment then stimulates cell death pathways—which control the cancer cells' fate—and prevents the glioblastoma from getting bigger.

The combination treatment works by manipulating sugar metabolism with the FDA-approved drug erlotinib against one of the most common genetic alterations in [glioblastoma](#), a [cell surface protein](#) known as EGFR. The researchers found that erlotinib treatment reduces sugar uptake in the majority of glioblastomas studied, thereby creating a metabolically vulnerable state for these brain tumors. The researchers then exploited this metabolic deficiency with an experimental drug called idasanutlin, which activates a protein called p53 to promote glioblastoma cell death and stimulate tumor regression in mice. Nathanson and his team also demonstrated that [positron emission tomography](#), or PET, imaging can predict which tumors would respond best to this combination treatment.

These findings build on previous research by Nathanson, who was a co-author of the initial study in 2013. That research showed that EGFR [genetic alterations](#) promote sugar uptake in glioblastomas. The researchers also found they could not directly attack sugar metabolism in the brain, due to potential side effects, since normal tissue requires sugar to survive.

Glioblastoma is one of the most lethal human cancers, with a median survival rate in adults of just 15 months after diagnosis.

Researchers conducted the study using 19 human glioblastoma cells from different people. Some of the cells were implanted in the mice to analyze the effectiveness of the [drug combination](#) treatment. The researchers used PET imaging to predict which tumors would benefit from the drug combination.

The researchers also used an assay, or an assessment tool, developed by collaborators at Harvard University to measure how close a brain tumor cell is to the death threshold while targeting [sugar metabolism](#).

The next stage of research will be to test the combination treatment on people with glioblastomas in clinical trials. Eventually, the researchers might design a new strategy involving the combination treatment that would attack and kill the glioblastoma altogether.

**More information:** Wilson X Mai et al. Cytoplasmic p53 couples oncogene-driven glucose metabolism to apoptosis and is a therapeutic target in glioblastoma, *Nature Medicine* (2017). [DOI: 10.1038/nm.4418](https://doi.org/10.1038/nm.4418)

Provided by University of California, Los Angeles

Citation: Combination treatment targeting glucose in advanced brain cancer shows promising results in preclinical study (2017, October 10) retrieved 23 April 2024 from <https://medicalxpress.com/news/2017-10-combination-treatment-glucose-advanced-brain.html>

<p>This document is subject to copyright. Apart from any fair dealing for the purpose of private study or research, no part may be reproduced without the written permission. The content is provided for information purposes only.</p>
--