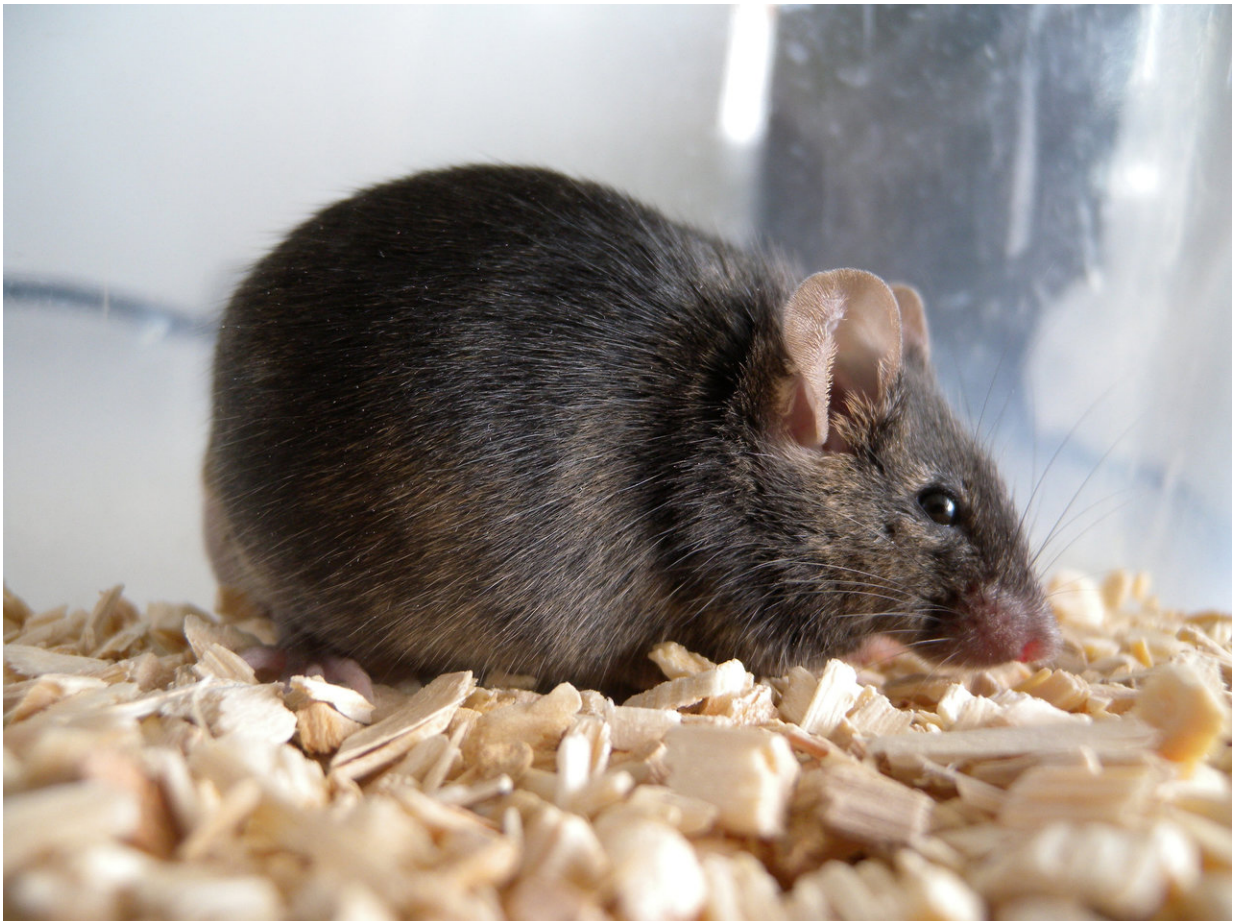


Stem cells conduct cartilage regeneration but are not directly involved

October 31 2017



Example picture: New double-transgenic rodent models identified the mode of action of stem cells. Credit: Vetmeduni Vienna

Stem cell therapy has great potential for curing cartilage damage. However, it has remained unclear whether stem cells are responsible for regeneration or whether they trigger the process. Researchers at the Vetmeduni Vienna have been able to resolve this issue by tracking the effects in a new, natural model. After injection, stem cells orchestrate the healing effect of endogenous cells but are not responsible for cartilage regeneration. The breakthrough is published in JCI-Insight and was enabled by preventing the normal immune response to the molecule required to trace the injected cells.

Therapy with [mesenchymal stem cells](#), the so-called progenitor cells of connective tissue, holds great promise for the regeneration of cartilage tissue but how [stem cell therapy](#) contributes to the healing of damaged connective tissue has been unclear. Debate has centred on whether the injected cells promote regeneration or stimulate the body's own cells to proliferate. A new strategy has now enabled researchers from the Department of Biomedical Sciences of the Vetmeduni Vienna to solve the question. The problem was that a marker [protein](#) was recognized by the immune system of the recipient as a non-self protein, leading to the rejection of the injected stem cells. The Vetmeduni Vienna scientists were able to overcome this limitation and show that progenitor cells do not participate directly in cartilage regeneration but serve to "animate" the process.

New model reveals mode of action of stem cells

"To date, it has not been possible to show what an injection of stem cells really does in an [animal model](#)," explains Reinhold Erben, the senior author of the study. "The problem is that you have to track the cells with particular proteins that the immune system of the recipient recognizes as non-endogenous and thus potentially harmful. The resulting rejection of the injected cells has prevented the validation of their mode of action."

It was thus only possible to track stem cells in immunodeficient animal models that had no reaction to the proteins due to a genetically reduced immune system. These models could not provide any clues about the mode of action of the stem cells. "We therefore worked with a 'lifelike' animal model that is immunocompetent but shows no response to our tracker molecule. This enabled us to show that [stem cells](#) have a purely modulating action in the treatment of [cartilage damage](#)," says Erben.

A new animal model

"We developed a so-called double-transgenic animal model for the purpose," notes Erben. Special donor and recipient lines of mice and rats were bred that expressed an artificially introduced human cell-surface protein, the placental alkaline phosphatase, ALPP, on all their cells to enable them to be traced. In addition, the ALPP of the recipient line differed from that of the donors at a single amino acid. As the two protein variants are almost identical, the immune system cannot distinguish the body's own cells from those of the donor. "Moreover, the mutation inactivates the otherwise heat-stable protein at high temperatures, allowing the recipient cells to be differentiated from the [donor cells](#) during the experiment," explains Erben.

The idea of using a protein variant both to enable the detection of the tracking molecule and to deceive the immune system of the recipient lines can be applied in other animal models. ALPP – like the green fluorescent protein, GFP, and luciferase – is commonly used as a marker protein. "Unlike other tracking molecules, the two variants represent the perfect combination for stem cell research," says Erben.

The use of a double transgenic system without the loss of immunocompetence should support [stem cell research](#) in fields other than cartilage regeneration. "Our results contribute to our understanding of stem cell therapy, as they show for the first time that therapy

stimulates the body's own [cells](#) to promote the regeneration of damaged [connective tissue](#), such as cartilage," concludes Erben.

More information: Daniela Zwolanek et al. Tracking mesenchymal stem cell contributions to regeneration in an immunocompetent cartilage regeneration model, *JCI Insight* (2017). [DOI: 10.1172/jci.insight.87322](https://doi.org/10.1172/jci.insight.87322)

Provided by University of Veterinary Medicine—Vienna

Citation: Stem cells conduct cartilage regeneration but are not directly involved (2017, October 31) retrieved 5 May 2024 from <https://medicalxpress.com/news/2017-10-stem-cells-cartilage-regeneration-involved.html>

This document is subject to copyright. Apart from any fair dealing for the purpose of private study or research, no part may be reproduced without the written permission. The content is provided for information purposes only.