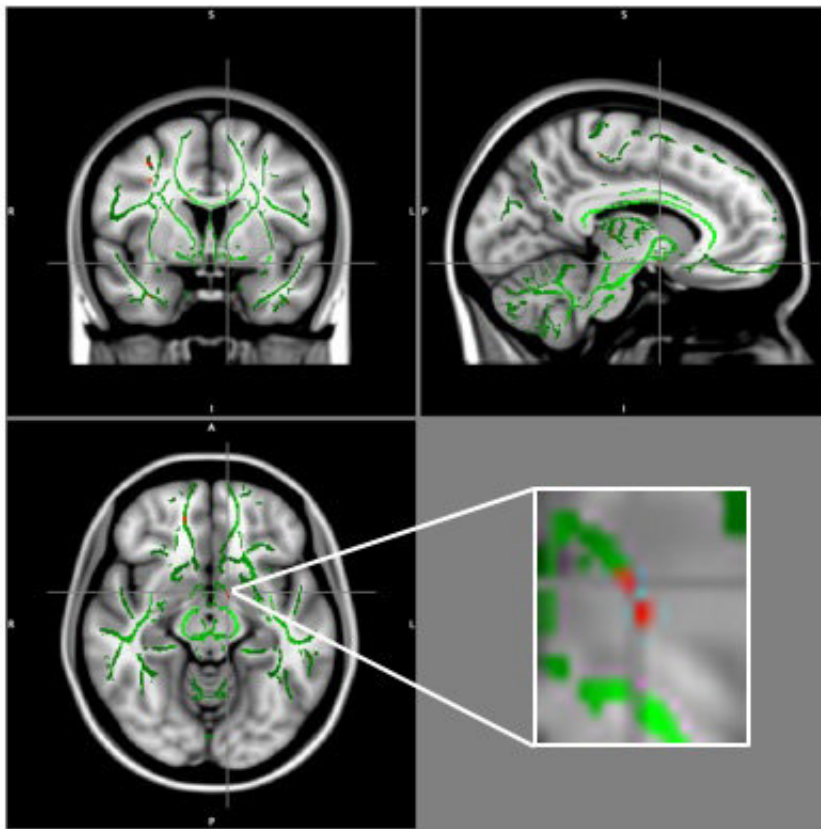


Brain's appetite regulator disrupted in obese teens

November 30 2017



Reduction of functional anisotropy (FA) in obese patients compared to control group (clusters in red), and FA skeleton (green), superimposed on the mean of FA images in the sample. At the intersection of the alignment vectors (coordinates x, y, z: -9, 1, -12), a cluster of FA decrease located in the left hypothalamus (PFWE =

Researchers using advanced MRI to study obese adolescents found disrupted connectivity in the complex regions of the brain involved in regulating appetite,

according to a new study presented today at the annual meeting of the Radiological Society of North America (RSNA).

According to the Centers for Disease Control and Prevention (CDC), [obesity](#) has more than quadrupled in adolescents over the past 30 years. It is estimated that more than one-third of children and adolescents in the U.S. are overweight or obese. Obesity in adolescence is associated with a number of health risks, including cardiovascular disease and diabetes.

The study at the University of Sao Paulo in Brazil included 59 obese adolescents between the ages of 11 and 18 and 61 healthy control adolescents matched for gender, age, socio-economical classification and education level. The adolescents were classified by the World Health Organization criterion for obesity. They had no other known chronic diseases or conditions. The study participants underwent [diffusion tensor imaging](#) (DTI) of the [brain](#) to evaluate white matter integrity.

DTI is a type of MRI exam that measures functional anisotropy (FA), the microscopic motion, or anisotropy, of water molecules within and surrounding the brain's white matter fibers. Low FA values indicate greater disruption within the white matter.

"DTI is a relatively new MRI technique not widely used in clinical diagnosis," said study author Pamela Bertolazzi, a biomedical scientist and Ph.D. student in the neuroimaging laboratory at the University of Sao Paulo.

The results showed loss of white matter integrity in several [brain regions](#) in the obese patients. Compared to the healthy controls, the brains of the obese adolescents showed a decrease in FA values in areas of the brain including the amygdala, hippocampus, thalamus, cingulate gyrus, fornix, insula, putamen, orbital gyrus and bilateral hypothalamus. Several of these regions are involved in appetite regulation, impulse control, emotions and reward and pleasure in eating.

"The data reveal a pattern of involvement among brain regions that are important in the control of appetite and emotions," Bertolazzi said. "There was no region of higher FA in [obese patients](#) compared to the control group," she added.

The researchers hope that these findings will offer new tools to combat this

global public health crisis.

"Childhood obesity has increased 10 to 40 percent in the last 10 years in most countries," Bertolazzi said. "If we are able to identify the brain changes associated with obesity, this DTI technique could be used to help prevent obesity and avoid the complications associated with the condition."

Provided by Radiological Society of North America

Citation: Brain's appetite regulator disrupted in obese teens (2017, November 30) retrieved 3 May 2024 from <https://medicalxpress.com/news/2017-11-brain-appetite-disrupted-obese-teens.html>

<p>This document is subject to copyright. Apart from any fair dealing for the purpose of private study or research, no part may be reproduced without the written permission. The content is provided for information purposes only.</p>
--