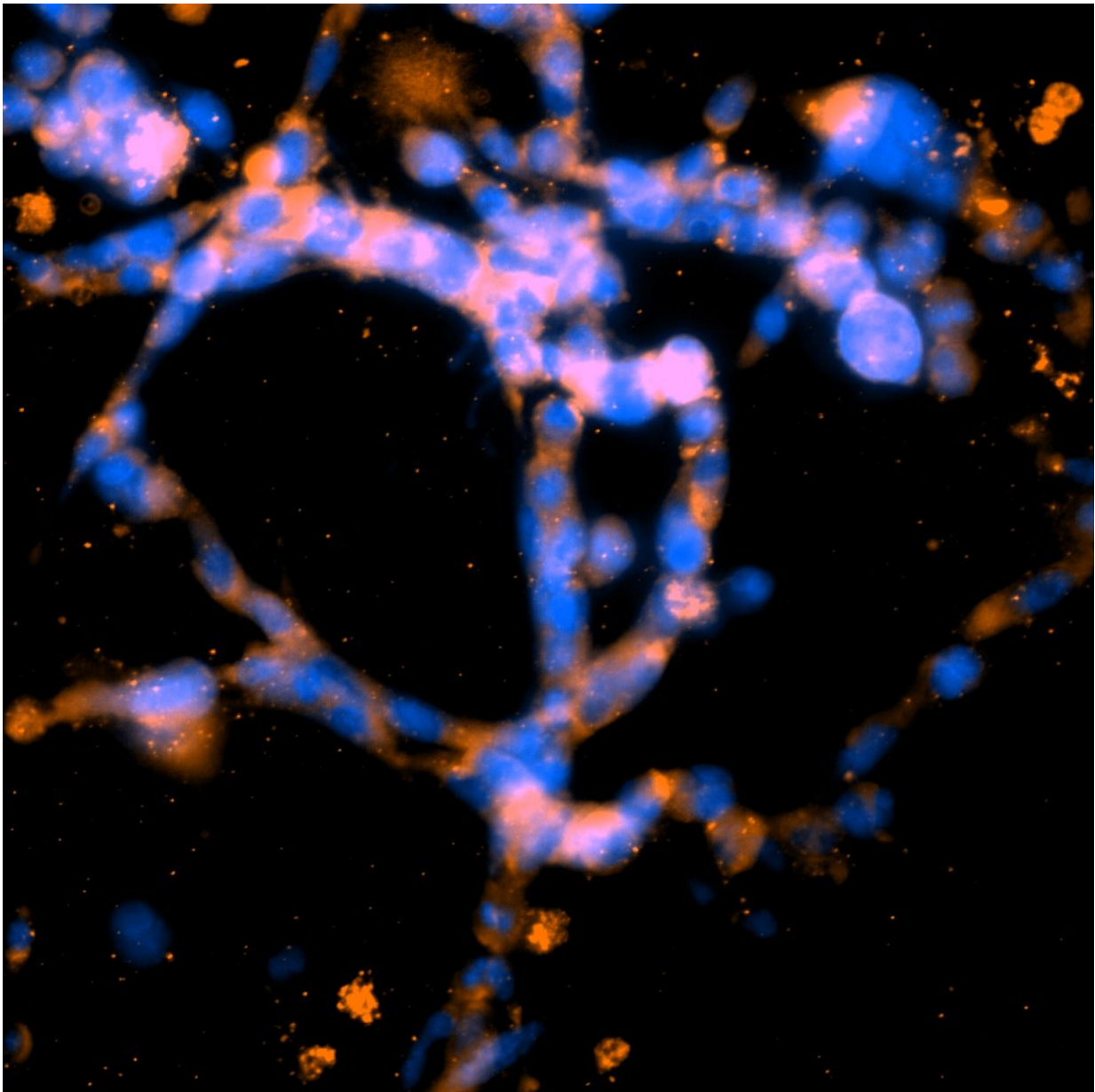


Researchers discover specific tumor environment that triggers cells to metastasize

November 21 2017



Breast cancer cells are grown in a highly dense 3-D collagen matrix. After 7 days the cells form networks that resemble the early stages of blood vessel development. Images show representative structures observed in these environments after staining for cells nuclei (blue) and the cell's cytoskeleton (green). Similar structures have been observed in tumor patient samples and have been referred to as vasculogenic mimicry. Credit: University of California San Diego

A team of bioengineers and bioinformaticians at the University of California San Diego have discovered how the environment surrounding a tumor can trigger metastatic behavior in cancer cells. Specifically, when tumor cells are confined in a dense environment, the researchers found that they turn on a specific set of genes and begin to form structures that resemble blood vessels.

In the past, physicians observed these blood vessel-like structures in the clinic—a phenomenon called vascular mimicry, which is associated with some of the most aggressive types of cancers. But they didn't understand what caused this transformation.

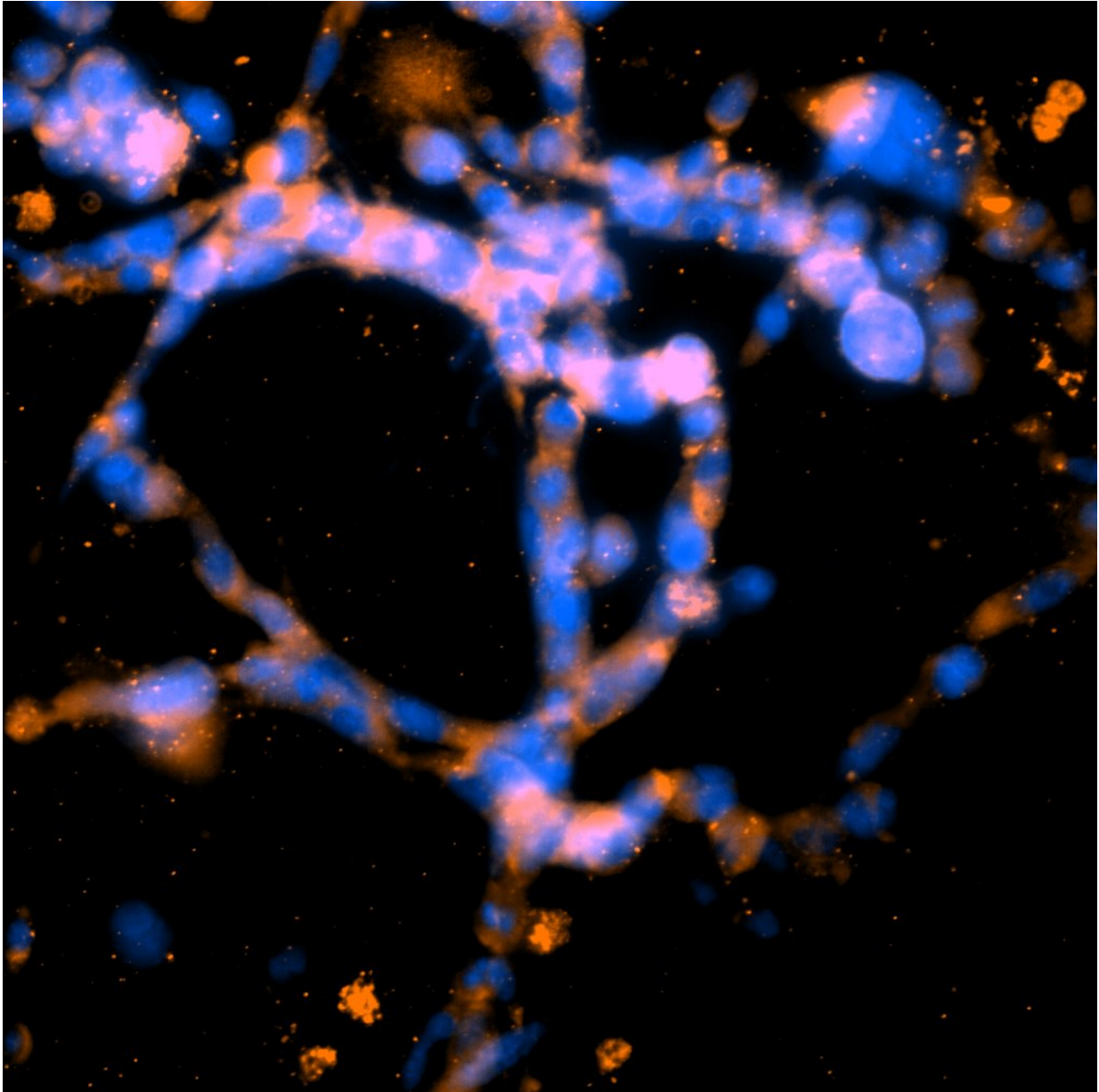
The study adds to [researchers'](#) knowledge of how the metastatic process may be initiated. "We are good at targeting tumor growth, but we do not know enough about metastasis," said Stephanie Fraley, a professor of bioengineering at the University of California San Diego and the leader of the study.

Metastatic spread of [tumor cells](#) from one location in the body to another is the cause of 90 percent of cancer-related deaths. The set of [genes](#) that the researchers discovered, called a gene module, was able to predict patient life expectancy and whether tumors will metastasize across nine types of cancer, including breast, lung, pancreatic, and kidney cancers.

This gene module could be used to help determine whether patients are suffering from an aggressive type of cancer and inform the decisions patients and their physicians make when choosing specific therapies.

Researchers detail their findings in the Nov. 21 issue of *Nature Communications*.

The researchers were able to make their observations by placing the [malignant cells](#) in a custom 3D collagen matrix that they built. They found that the cells turned into structures that mimic [blood vessels](#) when surrounded by the matrix made of short fibers and small pores (as opposed to long fibers and large pores) and that this phenomenon was independent of other physical features of the matrix such as stiffness. This finding came as a surprise.



Cellular networks are stained for the presence of basement membrane proteins. This positive stain is evidence that these structures share similarities with the phenomenon referred to as vasculogenic mimicry. Credit: University of California San Diego

"We thought that putting cells into this more constrained environment

would prevent their spread," said Daniel Ortiz Velez, the study's first author and a Ph.D. student in Fraley's lab. "But the opposite happened."

The cells do not exhibit this behavior in traditional petri dishes, the researchers said.

"It's critical to have the cells surrounded by a 3D environment that mimics what happens in the human body," Fraley said.

Drilling further, researchers found that the cells' behavior is caused by a specific gene module, which they named collagen-induced network phenotype, or CINP. Putting these cells into a constrained environment essentially rewrites their gene expression. "It's almost like the matrix is encoding the gene module," Fraley said.

In addition, researchers looked for this gene module in a range of human cancer gene expression and histology databases, which contain records of the microscopic structure of tissues. The presence of the module was a strong predictor of whether the cancer was likely to metastasize aggressively, after controlling for other factors, such as the patient's age.

This makes sense, because the channels built by the malignant cells allow blood to flow to tumors without coagulating and helps bring in nutrients. Researchers have speculated that this also makes it easier for [cancer cells](#) to spread through the patient's blood. Other studies have shown that when [cancer](#) cells are connected, it improves their chances of spreading to distant sites in the body.

Next steps include testing the method in animal studies and additional human datasets. Researchers also will be looking for molecular targets to prevent the transformation of the [cells](#).

Researchers are in talks to license their method.

More information: D. O. Velez et al. 3D collagen architecture induces a conserved migratory and transcriptional response linked to vasculogenic mimicry, *Nature Communications* (2017). [DOI: 10.1038/s41467-017-01556-7](https://doi.org/10.1038/s41467-017-01556-7)

Provided by University of California - San Diego

Citation: Researchers discover specific tumor environment that triggers cells to metastasize (2017, November 21) retrieved 3 May 2024 from <https://medicalxpress.com/news/2017-11-specific-tumor-environment-triggers-cells.html>

This document is subject to copyright. Apart from any fair dealing for the purpose of private study or research, no part may be reproduced without the written permission. The content is provided for information purposes only.