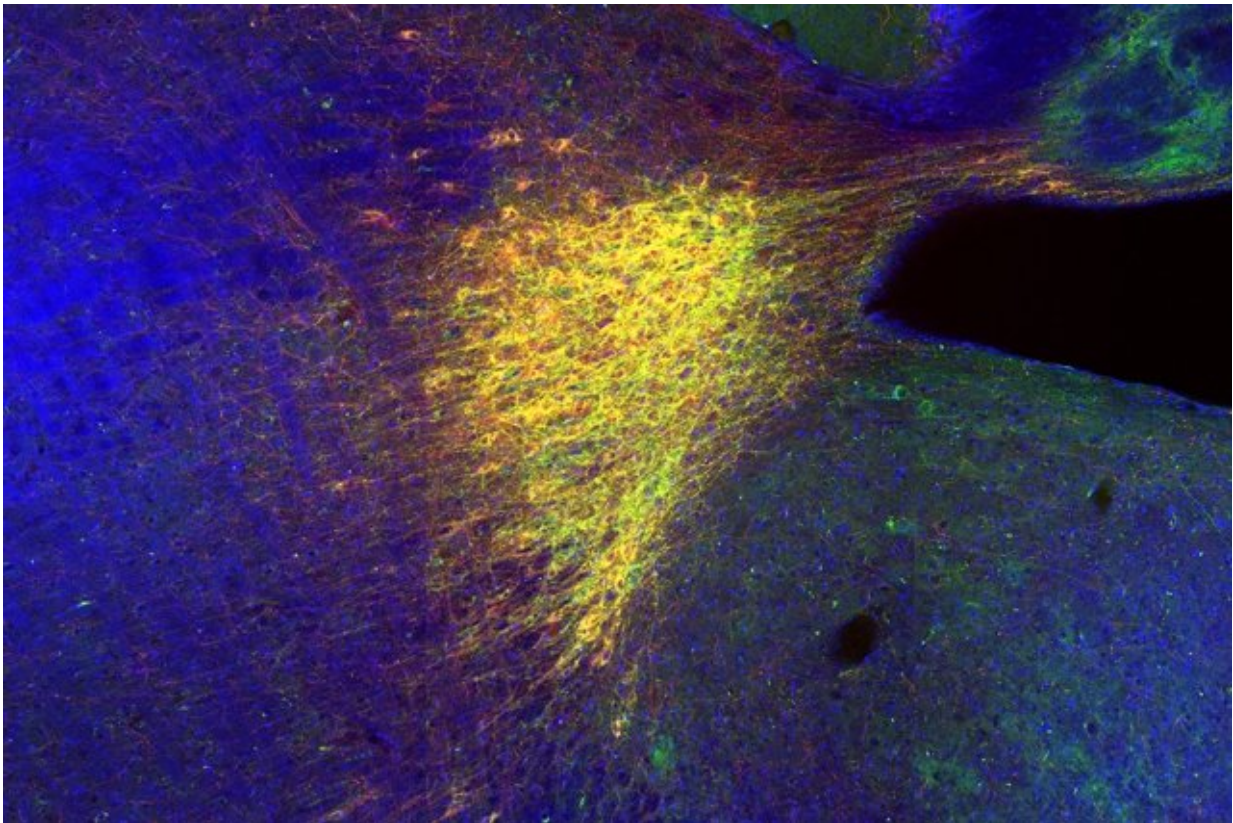


Neuroscientists identify a circuit that helps the brain record memories of new locations

December 27 2017, by Anne Trafton



The image shows the locus coeruleus, which drives neuronal circuits of the hippocampus and enables novel contextual memory. The red staining shows norepinephrine transporter (NET)-positive cells, indicating the locus coeruleus. The green staining shows adeno-associated virus (AAV)-mediated expressions of light-sensitive inhibitory opsin, archaerhodopsin (Arch). The blue staining shows all cells in the brain stem. Credit: Akiko Wagatsuma, Tonegawa Lab

When you enter a room, your brain is bombarded with sensory information. If the room is a place you know well, most of this information is already stored in long-term memory. However, if the room is unfamiliar to you, your brain creates a new memory of it almost immediately.

MIT neuroscientists have now discovered how this occurs. A small region of the brainstem, known as the [locus coeruleus](#), is activated in response to novel sensory stimuli, and this activity triggers the release of a flood of dopamine into a certain region of the hippocampus to store a [memory](#) of the new location.

"We have the remarkable ability to memorize some specific features of an experience in an entirely new environment, and such ability is crucial for our adaptation to the constantly changing world," says Susumu Tonegawa, the Picower Professor of Biology and Neuroscience and director of the RIKEN-MIT Center for Neural Circuit Genetics at the Picower Institute for Learning and Memory.

"This study opens an exciting avenue of research into the circuit mechanism by which behaviorally relevant stimuli are specifically encoded into [long-term memory](#), ensuring that important stimuli are stored preferentially over incidental ones," adds Tonegawa, the senior author of the study.

Akiko Wagatsuma, a former MIT research scientist, is the lead author of the study, which appears in the *Proceedings of the National Academy of Sciences* the week of Dec. 25.

New places

In a study published about 15 years ago, Tonegawa's lab found that a part of the hippocampus called the CA3 is responsible for forming memories

of novel environments. They hypothesized that the CA3 receives a signal from another part of the brain when a novel place is encountered, stimulating memory formation.

They believed this signal to be carried by chemicals known as neuromodulators, which influence neuronal activity. The CA3 receives neuromodulators from both the locus coeruleus (LC) and a region called the [ventral tegmental area](#) (VTA), which is a key part of the brain's reward circuitry. The researchers decided to focus on the LC because it has been shown to project to the CA3 extensively and to respond to novelty, among many other functions.

The LC responds to an array of sensory input, including visual information as well as sound and odor, then sends information on to other brain areas, including the CA3. To uncover the role of LC-CA3 communication, the researchers genetically engineered mice so that they could block the [neuronal activity](#) between those regions by shining light on neurons that form the connection.

To test the mice's ability to form new memories, the researchers placed the mice in a large open space that they had never seen before. The next day, they placed them in the same space again. Mice whose LC-CA3 connections were not disrupted spent much less time exploring the space on the second day, because the environment was already familiar to them. However, when the researchers interfered with the LC-CA3 connection during the first exposure to the space, the mice explored the area on the second day just as much as they had on the first. This suggests that they were unable to form a memory of the new environment.

The LC appears to exert this effect by releasing the neuromodulator dopamine into the CA3 region, which was surprising because the LC is known to be a major source of norepinephrine to the hippocampus. The

researchers believe that this influx of dopamine helps to boost CA3's ability to strengthen synapses and form a memory of the new location.

They found that this mechanism was not required for other types of memory, such as memories of fearful events, but appears to be specific to memory of new environments. The connections between the LC and CA3 are necessary for long-term spatial memories to form in CA3.

"The selectivity of successful [memory formation](#) has long been a puzzle," says Richard Morris, a professor of neuroscience at the University of Edinburgh, who was not involved in the research. "This study goes a long way toward identifying the brain mechanisms of this process. Activity in the pathway between the locus coeruleus and CA3 occurs most strongly during novelty, and it seems that activity fixes the representations of everyday experience, helping to register and retain what's been happening and where we've been."

Choosing to remember

This mechanism likely evolved as a way to help animals survive, allowing them to remember new environments without wasting brainpower on recording places that are already familiar, the researchers say.

"When we are exposed to sensory information, we unconsciously choose what to memorize. For an animal's survival, certain things are necessary to be remembered, and other things, familiar things, probably can be forgotten," Wagatsuma says.

Still unknown is how the LC recognizes that an environment is new. The researchers hypothesize that some part of the brain is able to compare new environments with stored memories or with expectations of the [environment](#), but more studies are needed to explore how this might

happen.

"That's the next big question," Tonegawa says. "Hopefully new technology will help to resolve that."

More information: Akiko Wagatsuma et al. Locus coeruleus input to hippocampal CA3 drives single-trial learning of a novel context, *Proceedings of the National Academy of Sciences* (2017). [DOI: 10.1073/pnas.1714082115](https://doi.org/10.1073/pnas.1714082115)

This story is republished courtesy of MIT News (web.mit.edu/newsoffice/), a popular site that covers news about MIT research, innovation and teaching.

Provided by Massachusetts Institute of Technology

Citation: Neuroscientists identify a circuit that helps the brain record memories of new locations (2017, December 27) retrieved 23 April 2024 from <https://medicalxpress.com/news/2017-12-neuroscientists-circuit-brain-memories.html>

<p>This document is subject to copyright. Apart from any fair dealing for the purpose of private study or research, no part may be reproduced without the written permission. The content is provided for information purposes only.</p>
--