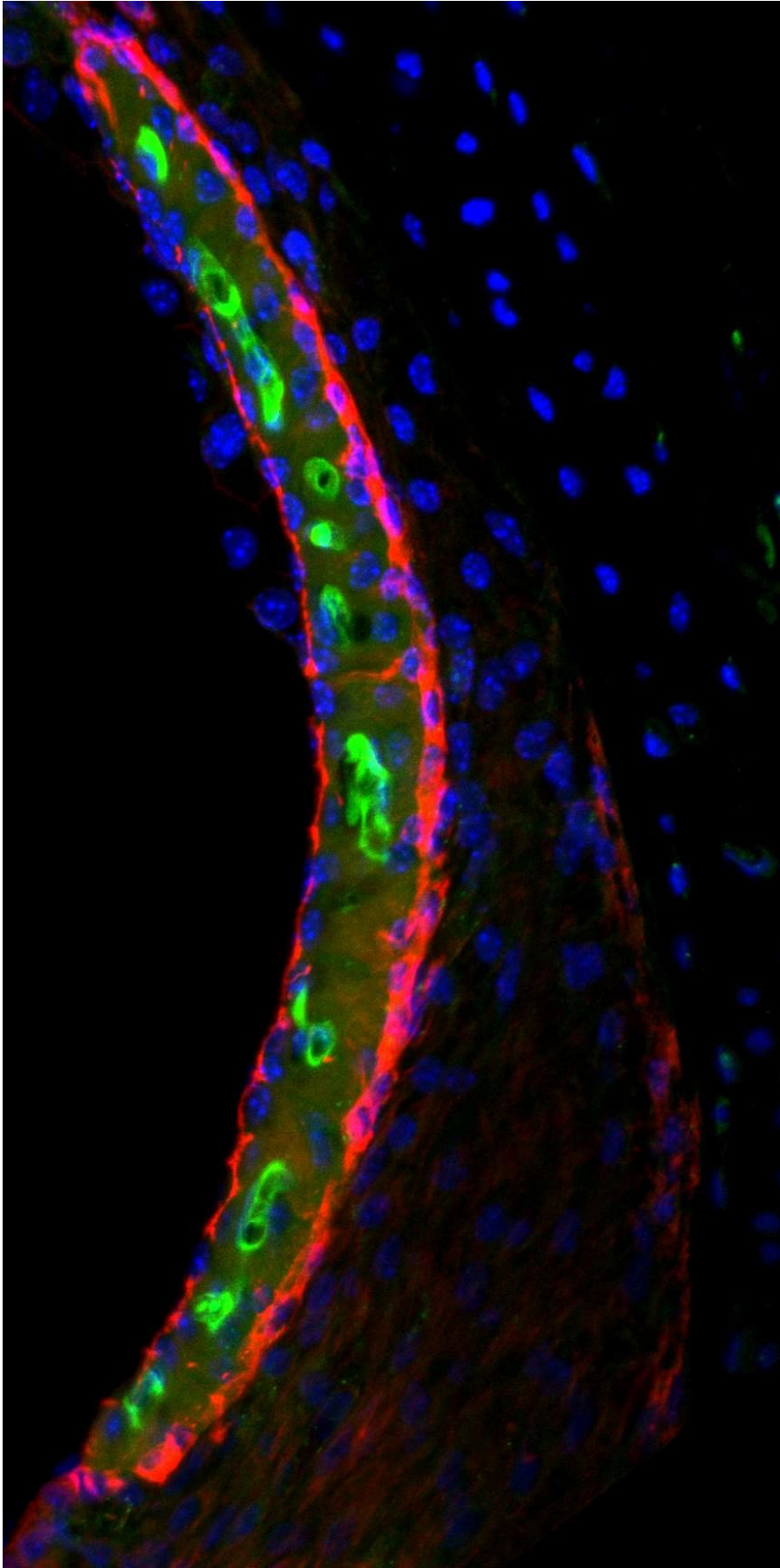


# **Study uncovers clues about why common cancer drug causes hearing loss**

December 20 2017

---



Cisplatin (appearing in green) in the stria vascularis of a mouse inner ear. Credit: National Institutes of Health

Scientists have found a new way to explain the hearing loss caused by cisplatin, a powerful drug used to treat many forms of cancer. Using a highly sensitive technique to measure and map cisplatin in mouse and human inner ear tissues, researchers found that forms of cisplatin build up in the inner ear. They also found a region in the inner ear that could be targeted for efforts to prevent hearing loss from cisplatin. The study is published in *Nature Communications*, and was supported by the National Institute on Deafness and other Communications Disorders (NIDCD), part of the National Institutes of Health.

Cisplatin and similar platinum-based drugs are prescribed for an estimated 10 to 20 percent of all cancer patients. The NIH's National Cancer Institute supported research that led to the [1965 discovery of cisplatin and continued development](#) leading to its success as an essential weapon in the battle against cancer. The drugs cause [permanent hearing loss](#) in 40 to 80 percent of adult patients and at least half of children who receive the drug. The new findings help explain why cisplatin is so toxic to the inner ear, and why hearing loss gets worse after each treatment, can occur long after treatment, and is more severe in children than adults.

"Hearing loss can have a major impact on a person's life," said James F. Battey, Jr., M.D., Ph.D., director of NIDCD. "Many adults with hearing loss struggle with social isolation and depression, among other conditions. Children who lose their hearing often have problems with social development and keeping up at school. Helping to preserve

hearing in cancer patients who benefit from these drugs would be a major contribution to the quality of their lives."

Lisa L. Cunningham, Ph.D., chief of the NIDCD Section on Sensory Cell Biology, led the research team, which included scientists from the National Institute on Minority Health and Health Disparities (NIMHD) and the National Center for Advancing Translational Sciences (NCATS). Support for data analysis was provided by Electro Scientific Industries, Inc., of Bozeman, Montana.

In most areas of the body, cisplatin is eliminated within days or weeks after treatment, but in the inner ear, the drug remains much longer. Previous research focused on why the inner ear is more sensitive than other parts of the body to cisplatin-induced damage. The NIH team pursued a new angle on the problem: What if the inner ear is not able to get rid of cisplatin, and cells in the inner ear important for hearing die because they are exposed to the drug for a long time?

The team developed a mouse model that represents cisplatin-induced hearing loss seen in human patients. By looking at inner ear tissue of mice after the first, second, and third cisplatin treatment, researchers saw that cisplatin remained in the mouse inner ear much longer than in most other body tissues, and that it builds up with each successive treatment. They also studied inner ear tissue donated by deceased adult patients who had been treated with cisplatin, and observed that cisplatin is retained in the inner ear many months or years after treatment. In addition, when they examined inner ear tissue from one child, they found cisplatin buildup that was even higher than seen in adults. These results suggest that the inner ear readily takes up cisplatin, but it has very little ability to remove the [drug](#).

In mice and human tissues, the research team saw the highest buildup of cisplatin in a part of the inner ear called the stria vascularis, which helps

maintain the positive electrical charge in inner ear fluid that certain cells need to detect sound. The research team determined that the accumulation of cisplatin in the stria vascularis portion of the inner ear contributed to cisplatin-related [hearing](#) loss.

"Our findings suggest that if we can prevent cisplatin from entering the stria vascularis in the inner ear during treatment, we may be able to protect [cancer patients](#) from developing [cisplatin](#)-induced [hearing loss](#)," said Cunningham.

**More information:** Andrew M. Breglio et al, Cisplatin is retained in the cochlea indefinitely following chemotherapy, *Nature Communications* (2017). [DOI: 10.1038/s41467-017-01837-1](https://doi.org/10.1038/s41467-017-01837-1)

Provided by National Institutes of Health

Citation: Study uncovers clues about why common cancer drug causes hearing loss (2017, December 20) retrieved 10 April 2024 from <https://medicalxpress.com/news/2017-12-uncovers-clues-common-cancer-drug.html>

|   |
|---|
| This document is subject to copyright. Apart from any fair dealing for the purpose of private study or research, no part may be reproduced without the written permission. The content is provided for information purposes only. |
|---|