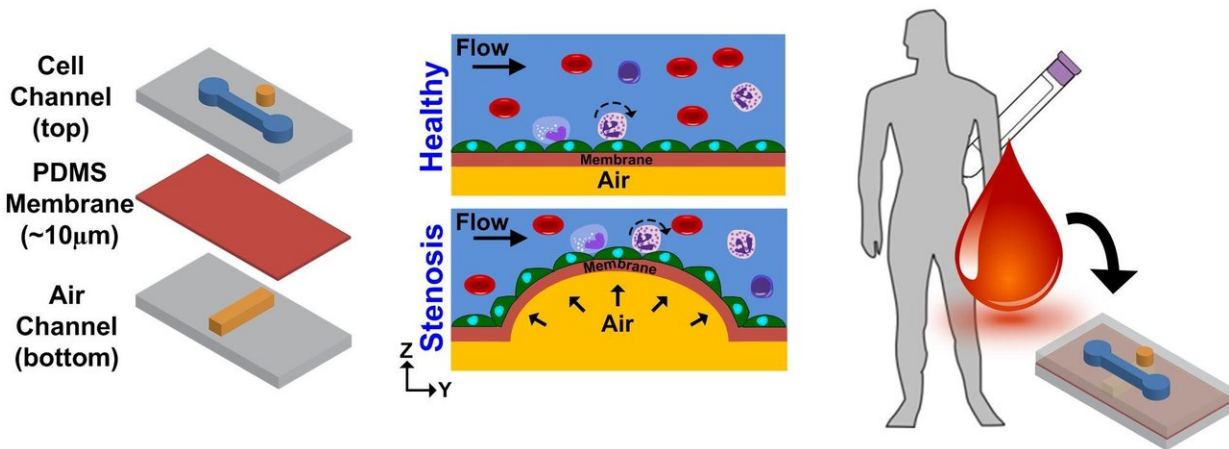


An organ-on-a-chip device that models heart disease

January 2 2018



Atherosclerosis-on-a-chip microdevice for modeling stenosis and assessing blood health. Credit: Han Wei Hou

When studying diseases or testing potential drug therapies, researchers usually turn to cultured cells on Petri dishes or experiments with lab animals, but recently, researchers have been developing a different approach: small, organ-on-a-chip devices that mimic the functions of human organs, serving as potentially cheaper and more effective tools.

Now, researchers have built a new device that's especially good for modeling atherosclerosis—the constriction of [blood](#) vessels that's the leading cause of heart attacks and strokes. In a paper appearing this

week in *APL Bioengineering*, from AIP Publishing, researchers illustrate how the new device can be used to study important inflammatory responses in [cells](#) that line the vessel in ways that could not be done in animal models. The research team also explains how this organ-on-a-chip could improve blood testing for patients.

"Atherosclerosis is a very important and complex disease," said Han Wei Hou, a biomedical engineer at Nanyang Technological University in Singapore. It develops when fat, cholesterol and other substances in the blood form plaque that accumulates on the inside walls of arteries. This buildup constricts the blood vessel, causing cardiovascular diseases.

Understanding what regulates this abnormal vessel constriction is crucial to studying and treating vessel disease and preventing acute cardiac arrest. While researchers have previously developed organ-on-a-chip models of blood vessels, those devices focused more on recreating the vessel's biological complexity than on its shape and geometry—which are key factors in atherosclerosis, Hou said. "It involves not just the biological aspect of endothelial dysfunction, but also the biomechanics of [blood flow](#)."

To address blood flow, the researchers built a device that fits on a single square-inch chip, consisting of two stacked chambers separated by a thin and flexible polymer membrane. The bottom contains air while the top contains a flowing fluid similar in mechanical properties to blood. Inside the fluid-filled chamber on top of the membrane, the researchers grow [endothelial cells](#)—the cells that line the inside of [blood vessels](#). The researchers pump air into the bottom chamber, so the membrane stretches like a balloon and forms a bubble that blocks the fluid flow. This process simulates the narrowing of a vessel.

The fluid-filled chamber constricts, causing the fluid to flow faster in some regions and slower in others. When the researchers grew the cells

under continuous but slow fluid flow, endothelial cells were able to grow and express a protein called ICAM-1; this protein is associated with inflammation and is important in the development of atherosclerosis.

The researchers found that when they replaced the cell culture media with human blood, more [immune cells](#) called monocytes bound to the endothelial cells in low-flow regions. Monocytes are mainly responsible for the accumulation of lipids, which eventually develop into the plaque that causes atherosclerosis.

These results on a chip are consistent with the widely accepted picture of the disease: Disturbed blood flow in constricted vessels promotes vascular inflammation, which encourages the recruitment of monocytes to help create plaques. "The new model can more accurately simulate atherosclerosis because [the] researcher can precisely tune constriction by controlling the air pressure," Hou said. This device could potentially help researchers better understand atherosclerosis and develop new treatments.

"[The device] has a lot of promise in terms of diagnostics," Hou said. As a proof-of-concept experiment, the researchers pumped blood spiked with TNF-alpha, a protein that's a sign of inflammation, into their device. The inflamed blood caused more immune cells to bind to the endothelial cells than normal. Measuring the number of bound immune cells can reveal the level of inflammation in the blood, an indicator of early atherosclerosis. In contrast to other tests that just count the number of immune cells circulating in blood, this technique could more accurately assess early immune responses in patients.

More information: Nishanth Venugopal Menon et al, A tunable microfluidic 3D stenosis model to study leukocyte-endothelial interactions in atherosclerosis, *APL Bioengineering* (2018). [DOI: 10.1063/1.4993762](https://doi.org/10.1063/1.4993762)

Provided by American Institute of Physics

Citation: An organ-on-a-chip device that models heart disease (2018, January 2) retrieved 3 May 2024 from <https://medicalxpress.com/news/2018-01-organ-on-a-chip-device-heart-disease.html>

This document is subject to copyright. Apart from any fair dealing for the purpose of private study or research, no part may be reproduced without the written permission. The content is provided for information purposes only.