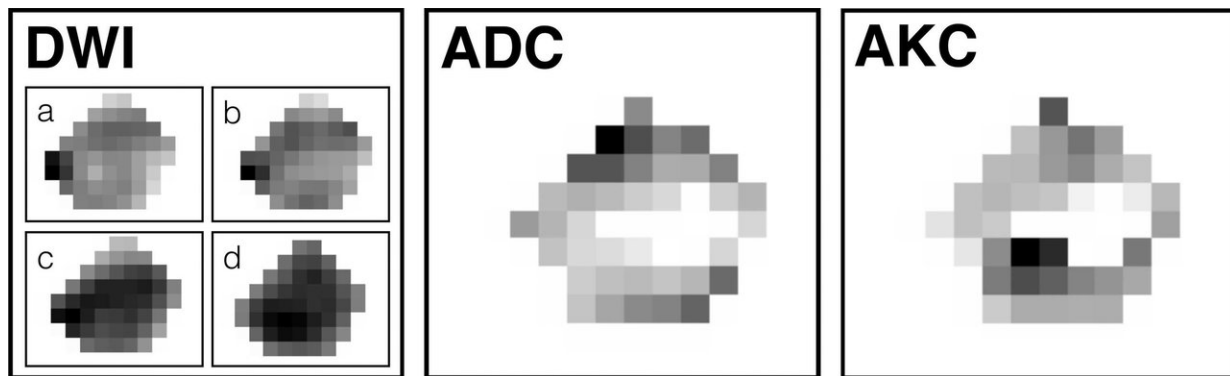


# MRI technique differentiates benign breast lesions from malignancies

February 20 2018



Two-dimensional sections of a three-dimensional acquisition of images of a malignant tumor. Diffusion weighted imaging (DWI) with b values of (a) 0, (b) 100, (c) 750, and (d) 1500 sec/mm<sup>2</sup>. Apparent diffusion coefficient (ADC) map and apparent kurtosis coefficient (AKC) map show the resulting pixel values after Kurtosis fitting. Notably, white pixels inside lesion constitute background after exclusion for not matching the fit criteria. Credit: Radiological Society of North America

An MRI breast imaging technique that requires no contrast agent, combined with sophisticated data analysis, could reduce the number of unnecessary breast biopsies, according to a new study appearing online in the journal *Radiology*.

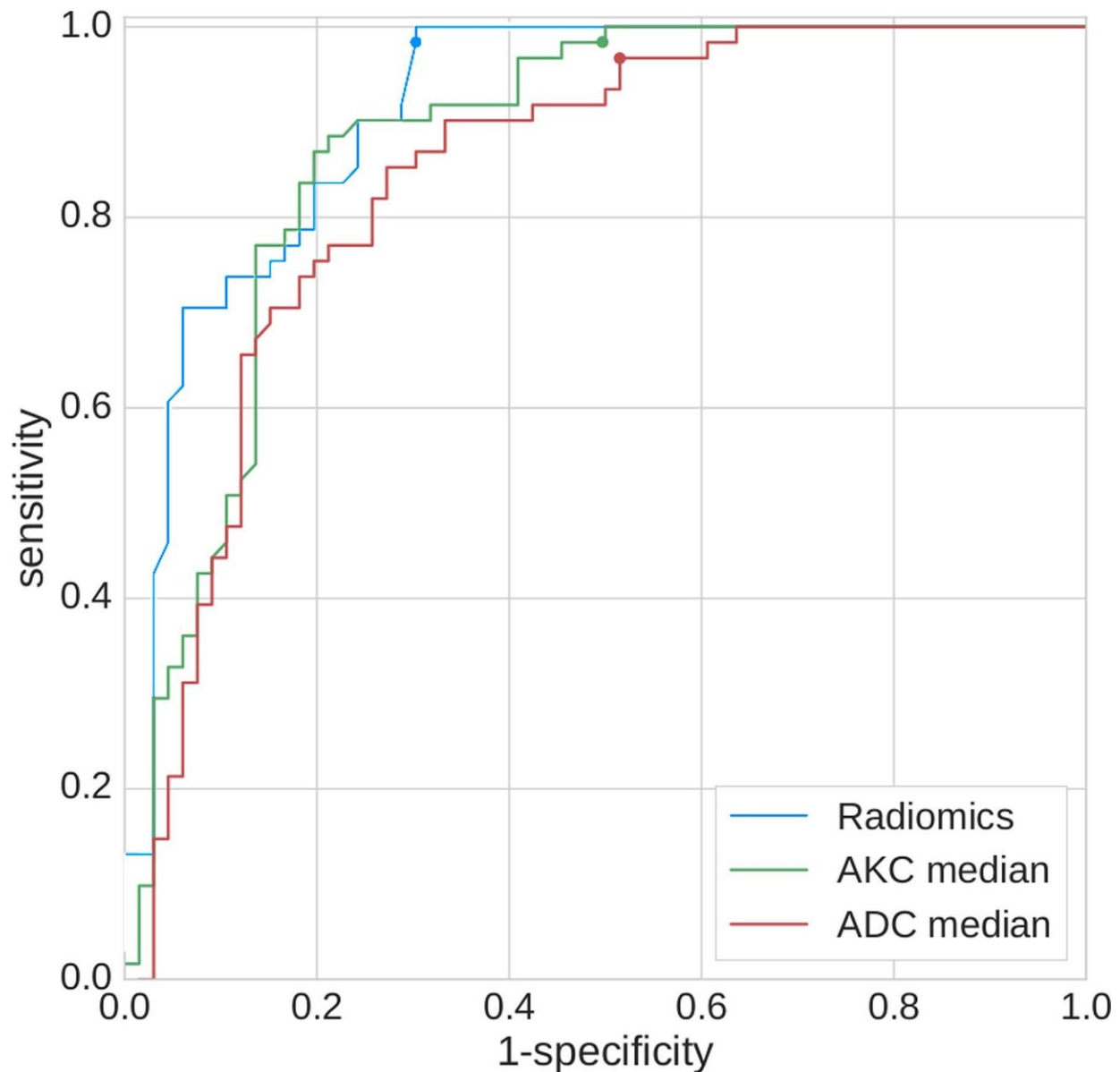
Breast MRI currently is used to screen women at high risk of [breast](#)

cancer and as a diagnostic adjunct to mammography. The examination relies on gadolinium-based contrast agents that need to be injected intravenously.

Researchers recently studied an alternative approach that eliminates the need for [contrast agents](#) in some cases by using diffusion-weighted imaging (DWI) measurements derived from MRI. The technique, known as diffusion kurtosis imaging, provides a picture of breast tissue on a microstructural level.

"Diffusion kurtosis imaging has been introduced in DWI to provide important information on [tissue structures](#) at a microscopic level," said study lead author Sebastian Bickelhaupt, M.D., from the German Cancer Research Center in Heidelberg, Germany. "Since malignant lesions disrupt the tissue structures at this level, diffusion kurtosis might serve as a relevant marker of changes."

Dr. Bickelhaupt, co-lead author Paul Jaeger, M.Sc., and colleagues evaluated a retrospective analysis of data collected from 222 women at two independent study sites. The women had suspicious findings on mammography that were classified under the Breast Imaging Reporting and Data System (BI-RADS) as BI-RADS 4 and 5 [breast lesions](#). A BI-RADS 4 lesion is considered a suspicious abnormality, while a 5 is considered highly suspicious of malignancy. The women underwent DWI followed by biopsy.



Receiver operating characteristic plot for the radiomics model, apparent kurtosis coefficient (AKC) median and apparent diffusion coefficient (ADC) median. Dots illustrate the resulting thresholds. Credit: Radiological Society of North America

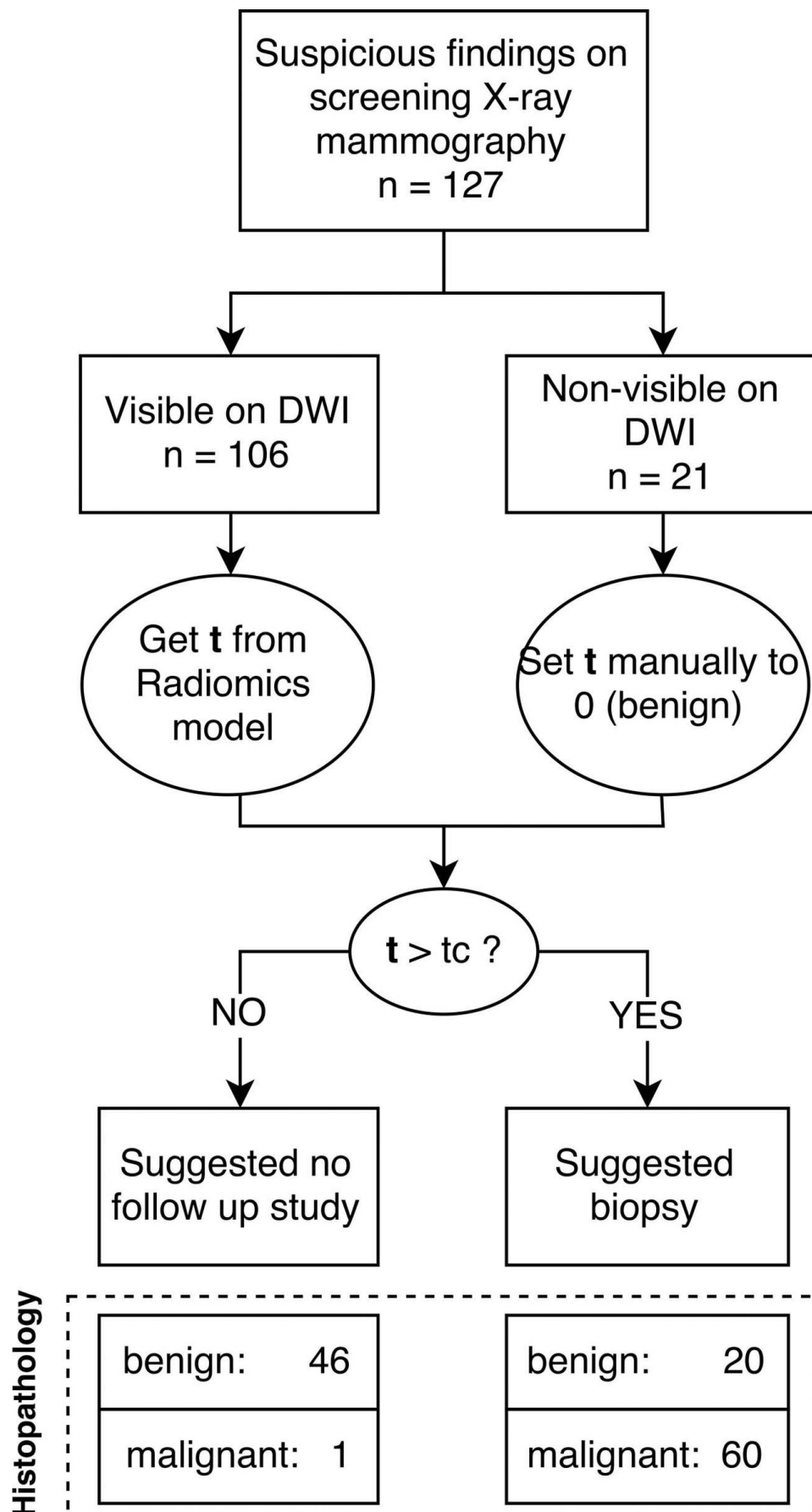
For the analysis, a software algorithm was developed for lesion characterization, and imaging features were extracted using a kurtosis-

based radiomics model. Radiomics is a rapidly growing field that enables the extraction of a large amount of quantifiable data from [images](#).

In an independent test set of 127 women, the radiomics analysis reduced false-positive findings by 70 percent, while detecting 60 of 61 [malignant lesions](#), or 98 percent.

"The model might help to lower the number of BI-RADS 4 lesions suspected of being cancer on the basis of screening mammography while retaining a high sensitivity similar to the sensitivity reported for biopsies themselves," Jaeger said.

Should the results hold in larger trials, the model has potential advantages in the clinic beyond its ability to reduce unnecessary biopsies in women with BI-RADS 4 [lesions](#). The software algorithm makes the assessment reader-independent, ensuring that its accuracy is maintained across different imaging facilities.



Flow diagram shows patient selection in the independent test set. DWI = Diffusion weighted imaging,  $t$  = result of the threshold calculation;  $t_c$  = cut-off threshold to differentiate between benign and malignant lesions. Credit: Radiological Society of North America

The new approach is not intended to replace current contrast-enhanced breast MRI protocols in general, Dr. Bickelhaupt emphasized, but to expand the spectrum of options available for answering specific clinical questions.

"This might also improve the efficiency of reporting," he said.

**More information:** "Radiomics Based on Adapted Diffusion Kurtosis Imaging Helps to Clarify Most Mammographic Findings Suspicious for Cancer" *Radiology*, 2018.

Provided by Radiological Society of North America

Citation: MRI technique differentiates benign breast lesions from malignancies (2018, February 20) retrieved 5 May 2024 from <https://medicalxpress.com/news/2018-02-mri-technique-differentiates-benign-breast.html>

<p>This document is subject to copyright. Apart from any fair dealing for the purpose of private study or research, no part may be reproduced without the written permission. The content is provided for information purposes only.</p>
--