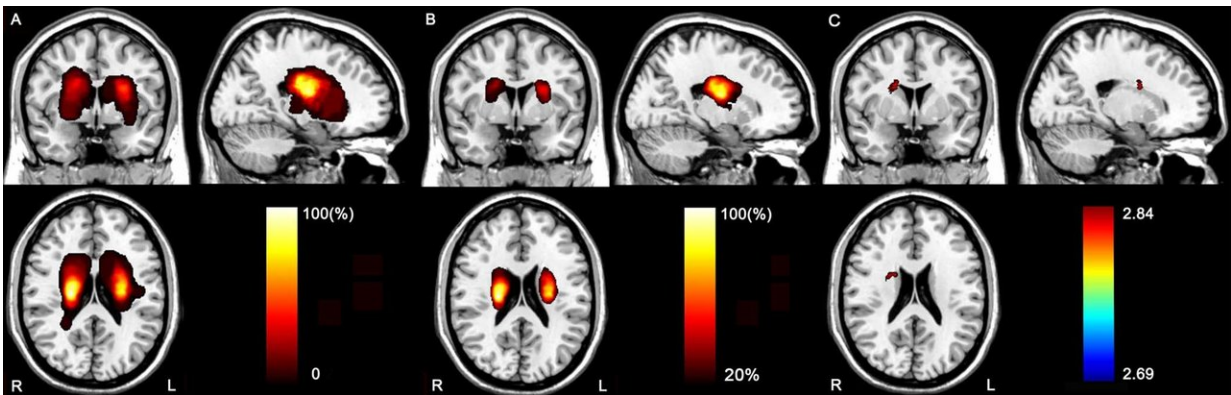


Impaired brain pathways may cause attention problems after stroke

May 8 2018



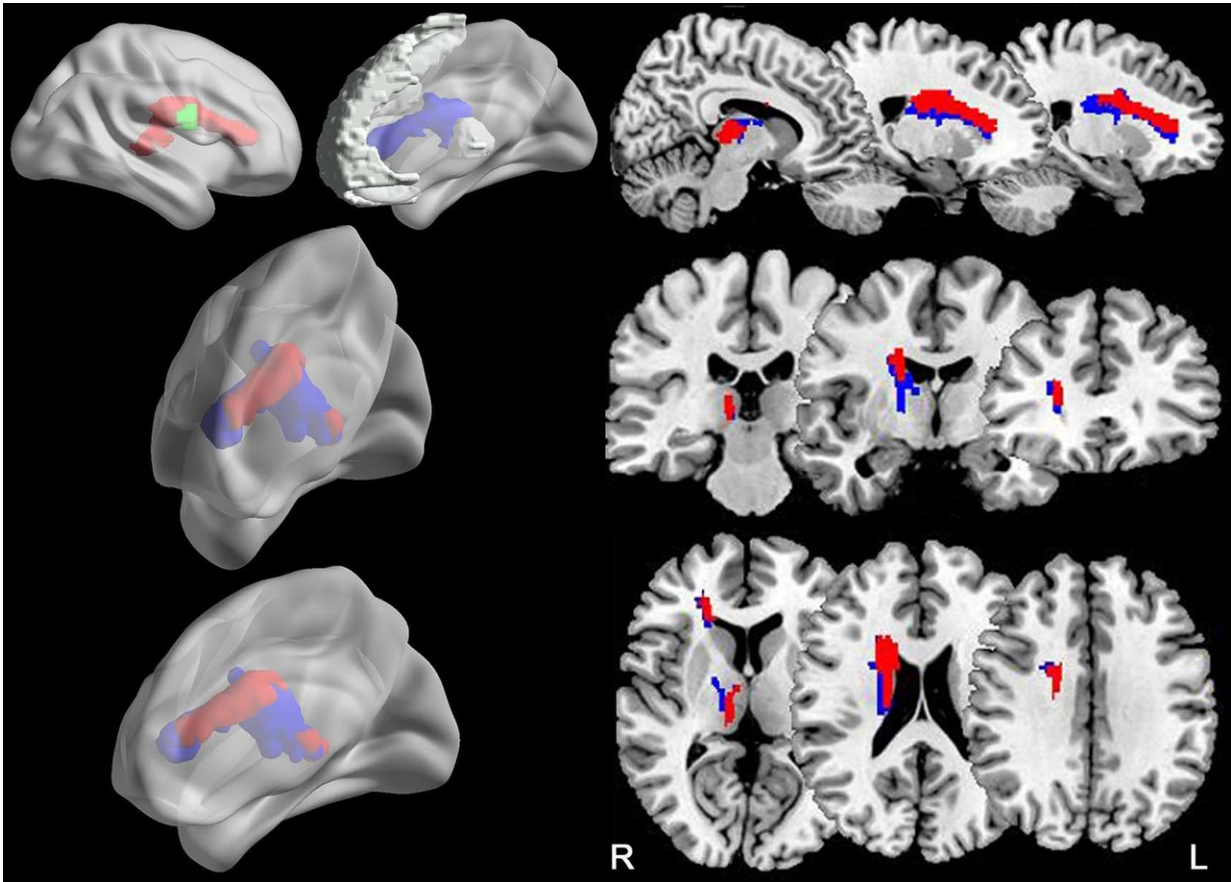
Stroke lesions. A, Lesion incidence map in patients with acute stroke. B, Lesion incidence map shows regions in which at least 10 patients had a lesion. Color bar denotes the probability of lesion distribution. C, Brain region that is correlated with attention deficit in the voxel-based lesion-symptom mapping (VLSM) analysis. Color bar denotes the t values. Credit: Radiological Society of North America

Damage to some of the pathways that carry information throughout the brain may be responsible for attention deficit in patients who have had a subcortical stroke in the brain's right hemisphere, according to a study published online in the journal *Radiology*. Researchers hope the findings may provide a measure for selecting suitable patients for early interventions aimed at reducing cognitive decline following stroke.

A [stroke](#) may affect cortical regions of the cerebral cortex, which includes the gray matter that lines the surface of the brain, or it may affect brain regions below the cortex, including white matter tracts connecting different regions of the brain. A stroke affecting brain structures below the cortex is known as a subcortical stroke.

More than one-third of [patients](#) experience cognitive decline after a stroke, including attention [deficit](#), which can affect and impair the patient's ability to carry out routine activities of daily living.

"Impairment of attention has been observed in patients with both cortical and subcortical stroke," said senior study author Chunshui Yu, M.D., from the Department of Radiology at Tianjin Medical University General Hospital in Tianjin, China. "In cortical stroke, the direct involvement of cortical regions associated with attention may account for the deficit. However, the parts of the nervous and brain systems underlying attention deficit in subcortical stroke remain largely unknown."



Anatomic connections of the responsible lesion region (red) and the thalamic-prefrontal pathway (blue). Green denotes the seed region (responsible lesion region), gray indicates the origin (thalamus) and target (prefrontal) regions of the thalamic-prefrontal pathway. Credit: Radiological Society of North America

To investigate the mechanisms underlying attention deficit in chronic subcortical stroke, Dr. Yu and colleagues combined voxel-based lesion-symptom mapping (VLSM) and diffusion tensor tractography (DTT) in 49 patients (32 men and 17 women between the ages of 40 and 71) after subcortical stroke and 52 control patients (30 men and 22 women, age 40-68). VLSM is a method of analyzing relationships between tissue damage and behavioral deficits, and DTT is an MRI technique that allows for 3-D visualization of specific white matter tracts in the brain.

A modified version of the attention network test was used to assess visual attention function. VLSM was used to identify lesion locations related to attention deficit in the stroke patients. Then DTT was used to determine the responsible impaired brain connections at the chronic stage (> 6 months post-stroke).

The results showed that compared to the controls, patients with chronic stroke exhibited prolonged reaction time during the attention task. VLSM revealed that having an acute stroke lesion in the right caudate nucleus and nearby white matter was correlated to the prolonged reaction time. DTT showed that the responsible lesion was located in the right thalamic- and caudate-prefrontal pathways in controls.

The right brain damage subgroup had significantly decreased fractional anisotropy (FA) in these pathways, which were correlated with the prolonged reaction time. FA provides a way to measure diffusion occurring within a region of the brain. FA is typically higher in [brain](#) regions of high organization. Reductions in FA have been previously associated with advancing age and in cases of cognitive impairment.

"The impairment of the right thalamic- and caudate-prefrontal pathways was consistently associated with [attention](#) deficit in patients with right subcortical stroke," Dr. Yu said. "Based on this association, one can estimate which patients with stroke would be more likely to develop into long-term persisting [attention deficit](#) by evaluating the lesion-induced damage to these pathways."

More information: "Connection Disruption Underlying Attention Deficit in Subcortical Stroke" *Radiology*, 2018.

Provided by Radiological Society of North America

Citation: Impaired brain pathways may cause attention problems after stroke (2018, May 8)
retrieved 25 April 2024 from

<https://medicalxpress.com/news/2018-05-impaired-brain-pathways-attention-problems.html>

This document is subject to copyright. Apart from any fair dealing for the purpose of private study or research, no part may be reproduced without the written permission. The content is provided for information purposes only.