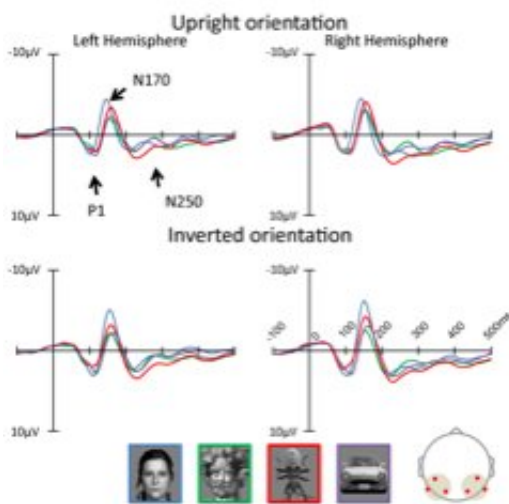


Do people subconsciously judge face-likeness?

May 14 2018



Brain's reaction when a face-like object is viewed. Credit: Toyohashi University of Technology

The research team at the Visual Perception and Cognition Laboratory of the Toyohashi University of Technology has revealed that face-likeness is judged by early visual processing at around 100 milliseconds after viewing an object. The present study focuses on the relation between face-likeness recognition and brain activity to suggest for the first time that face-likeness recognition is influenced by early visual processing. The results of the present study were published in the open access journal *Frontiers in Human Neuroscience*.

Face-likeness [recognition](#) is the act of recognizing a non-face object as a human face. This phenomenon is called "pareidolia," and refers to "perceiving an inherently meaningless object such as a pattern, landscape or object as another object with meaning." Many spirit photographs rely on this phenomenon. While pareidolia has been argued to occur in relatively low-level visual processing, the specific level of visual processing in which pareidolia actually occurs was never previously discerned.

Therefore, the research team of the Visual Perception and Cognition Laboratory at the Toyohashi University of Technology decided to study brain activity when a face-like object is viewed to reveal the level of visual processing at which face-likeness occurs.

Ph.D. student and lead author of the study Yuji Nihei says, "Visual processing of the human face is divided into three stages. The first stage is early visual processing of roughly identifying the object. Then, if the object is a face, distinguishing the parts of the face (eyes, nose, mouth) from one another and processing the outline and parts of the face. Lastly, expression and individual differences are distinguished. We studied the relation between activity at these three stages of processing and the results of actual recognition and determined that face-likeness recognition occurs in the first stage of visual processing. This processing occurs at a speed of approximately 100 milliseconds after viewing an object, and so we believe that face-likeness processing occurs before we are aware of the object."

Associate Professor Minami Testuto, who leads the research team, says that, "While seeing face-likeness in various objects could be considered incorrect in terms of [object](#) recognition, we believe this is not just a mistake and actually makes us reconsider an important cognitive function. We would like to continue our study of face-likeness recognition from an objective approach."

The results of this study are believed to serve as a key to uncovering the mechanism of how humans recognize and distinguish between two types of information—faces and objects. The results of the present study also suggest that face-likeness recognition occurs in early [visual processing](#) and that face-like objects are processed in the same manner as a [human face](#) in later stages. Due to this, we believe that face-likeness can be caused by an effect that gathers attention to the face, or some other like stimulus.

More information: Yuji Nihei et al, Brain Activity Related to the Judgment of Face-Likeness: Correlation between EEG and Face-Like Evaluation, *Frontiers in Human Neuroscience* (2018). [DOI: 10.3389/fnhum.2018.00056](#)

Provided by Toyohashi University of Technology

Citation: Do people subconsciously judge face-likeness? (2018, May 14) retrieved 26 April 2024 from <https://medicalxpress.com/news/2018-05-people-subconsciously-face-likeness.html>

<p>This document is subject to copyright. Apart from any fair dealing for the purpose of private study or research, no part may be reproduced without the written permission. The content is provided for information purposes only.</p>
--