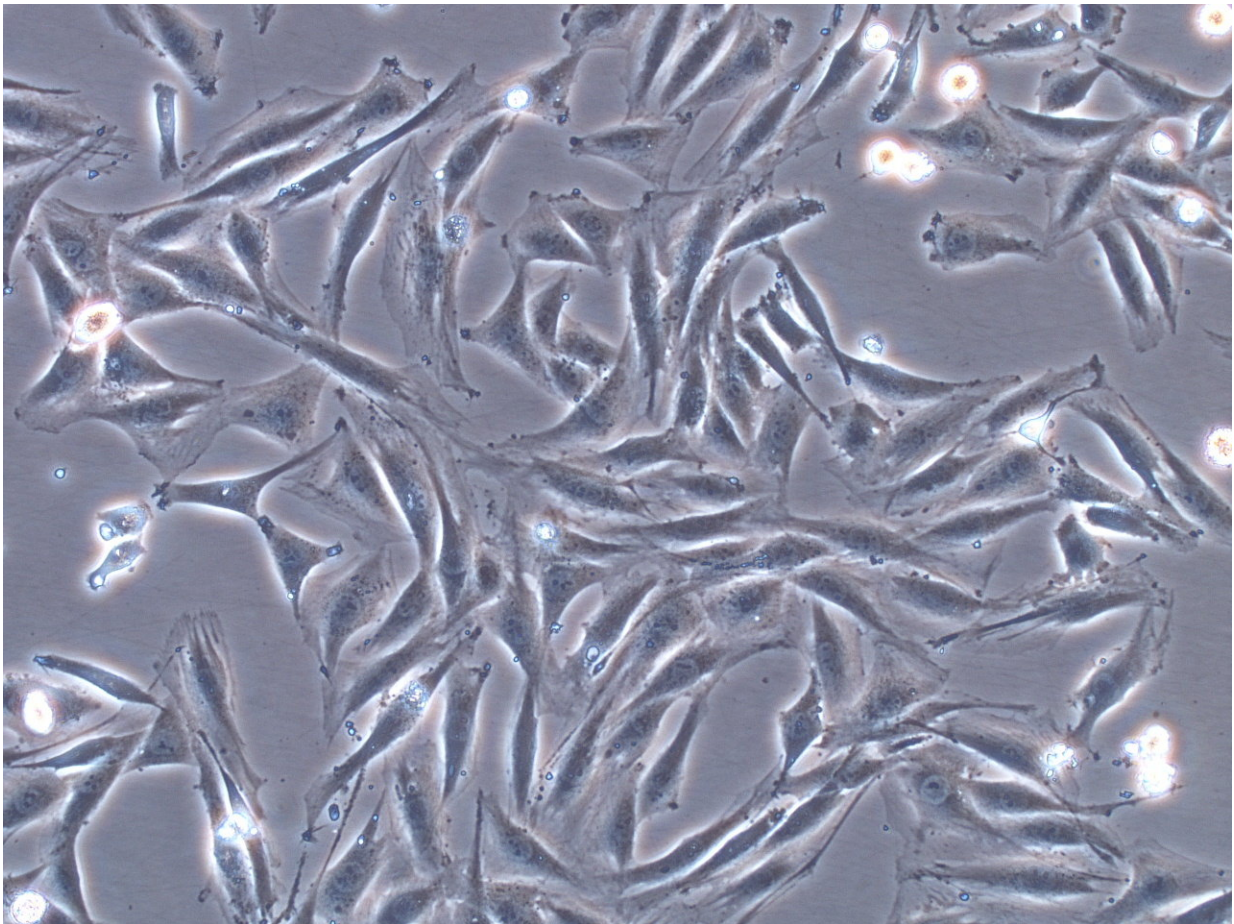


# Space-like gravity weakens biochemical signals in muscle formation

May 23 2018

---



Skeletal myoblast cells in rats. Credit: Yuge Lab

Astronauts go through many physiological changes during their time in

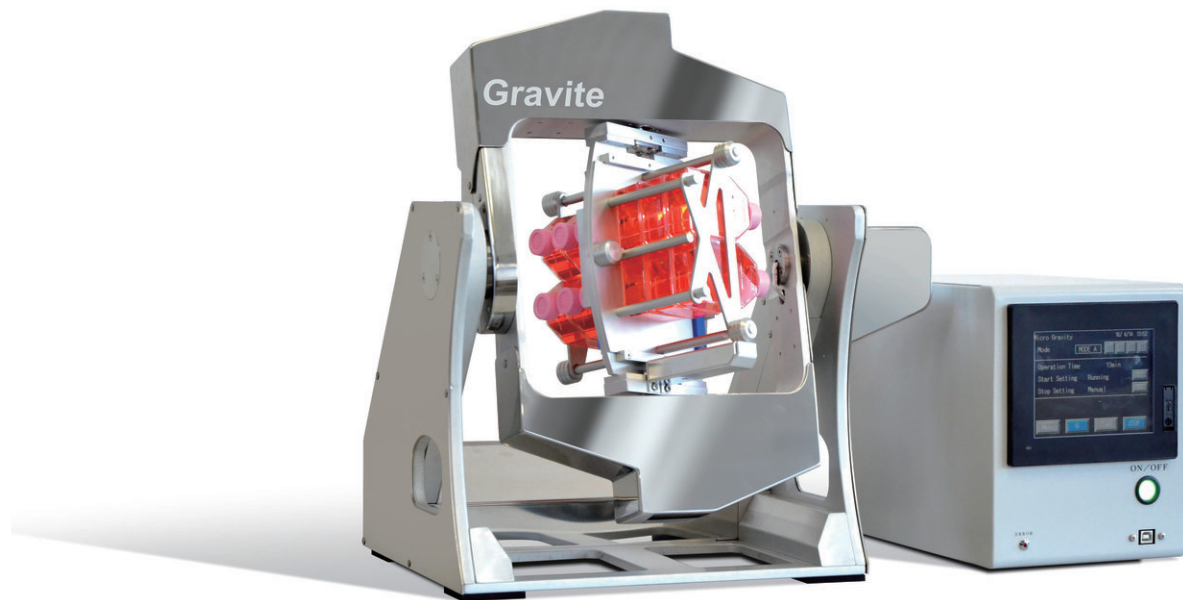
spaceflight, including lower muscle mass and slower muscle development. Similar symptoms can occur in the muscles of people on Earth's surface, too. In fact, it could affect everyone to some extent later in life.

"Age-related skeletal muscle disorders, such as sarcopenia, are becoming a greater concern in society," said Hiroshima University (HU) Professor and Space Bio-Laboratories Director Louis Yuge. "It is especially a big concern in Japan, where the number of aging people is increasing."

In a study published in *npj Microgravity*, a medical research group at HU led by Yuge shed light on these similarities. They found that the process that affects [gene expression](#) of differentiating [muscle cells](#) in [space](#) also affects [cells](#) in the presence of gravity.

The genetic and molecular basis of impaired muscle development has been unclear. Yuge thinks there is a pressing need to understand it and come up with better treatment outcomes. He and his team investigated how simulated microgravity—that is, gravity in space-like conditions—affects muscle cell differentiation and gene expression.

They observed what happened to rat muscle cells over time. Some cells were treated with a drug that stops DNA methylation from happening, while other cells were not. DNA methylation is a process that controls gene expression and muscle cell differentiation.



Gravite is a multi-directional gravity device for simulating microgravity or hypergravity condition culture Credit: Space Bio-Laboratories Co.,Ltd.

Next, they grew the cells either in normal gravity or inside of Gravite, a machine that simulates gravity at levels that astronauts experience in spaceflight. Cells in microgravity exhibited less cell differentiation after all. However, cells growing without the drug formed muscle fibers at a slower rate and showed less gene expression.

One gene, *Myod1*, was of particular interest. Its expression levels were significantly lower in microgravity conditions and when growing with the drug that stopped DNA methylation.

Within gravity, as well as without it, the group concluded that DNA methylation appears to be a key player in regulating muscle cell differentiation. "These findings highlight genes affected by DNA

methylation, like Myod1, as potential targets for treating patients with skeletal muscle atrophy," Yuge said.

The team's results can be utilized in space experiments, where [muscle atrophy](#) of astronauts uses myotubes because it is easy to understand morphologically. Additionally, the findings of this epigenetics can be used in many [differentiated cells](#), [stem cells](#), or cancer. The Micro-G Center of the Kennedy Space Center of NASA, where Yuge is an advisory committee member, and NASA have already conducted experiments to cultivate stem cells on the International Space Station, where this paper can also provide insight. Yuge and his team are expected to start a massive space experiment at NASA/Center for Advancement of Science in Space (CASIS).

**More information:** Takuma Furukawa et al, Simulated microgravity attenuates myogenic differentiation via epigenetic regulations, *npj Microgravity* (2018). [DOI: 10.1038/s41526-018-0045-0](https://doi.org/10.1038/s41526-018-0045-0)

Provided by Hiroshima University

Citation: Space-like gravity weakens biochemical signals in muscle formation (2018, May 23) retrieved 27 April 2024 from <https://medicalxpress.com/news/2018-05-space-like-gravity-weakens-biochemical-muscle.html>

<p>This document is subject to copyright. Apart from any fair dealing for the purpose of private study or research, no part may be reproduced without the written permission. The content is provided for information purposes only.</p>
--