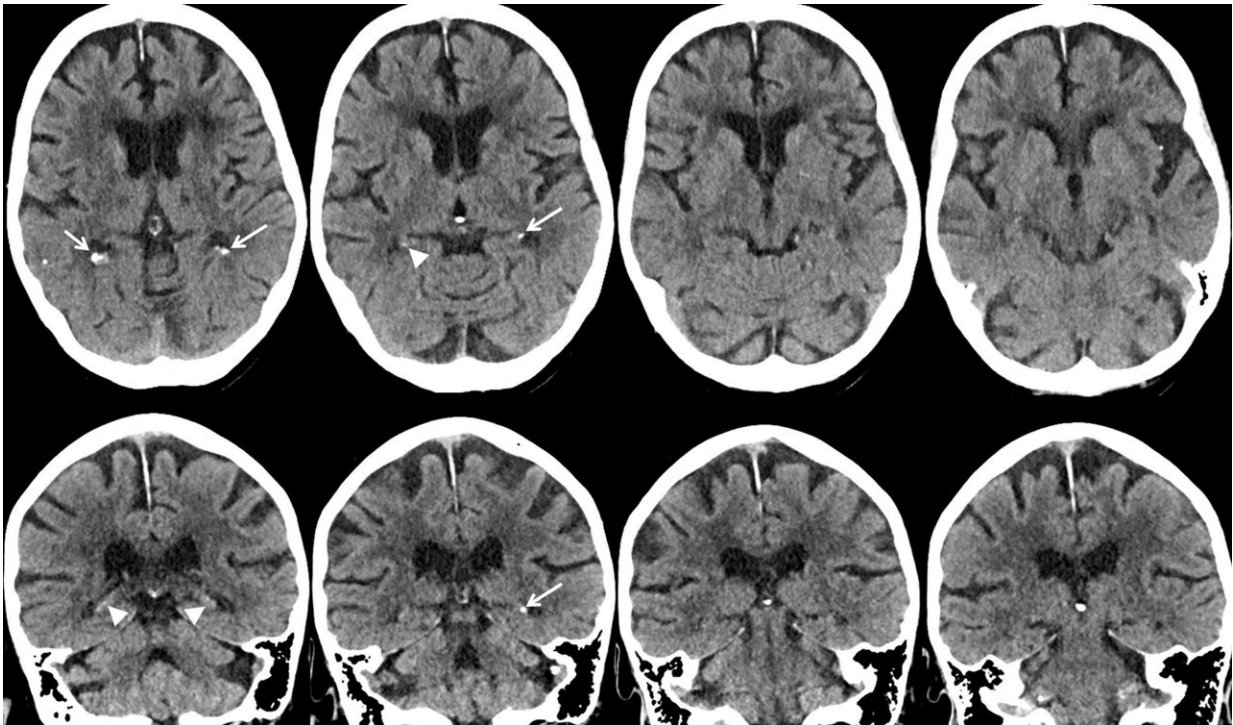


Smoking and diabetes linked to brain calcifications

June 12 2018



Axial and coronal CT images in 88-year-old woman show mild hippocampal calcification (arrowheads). Credit: Radiological Society of North America

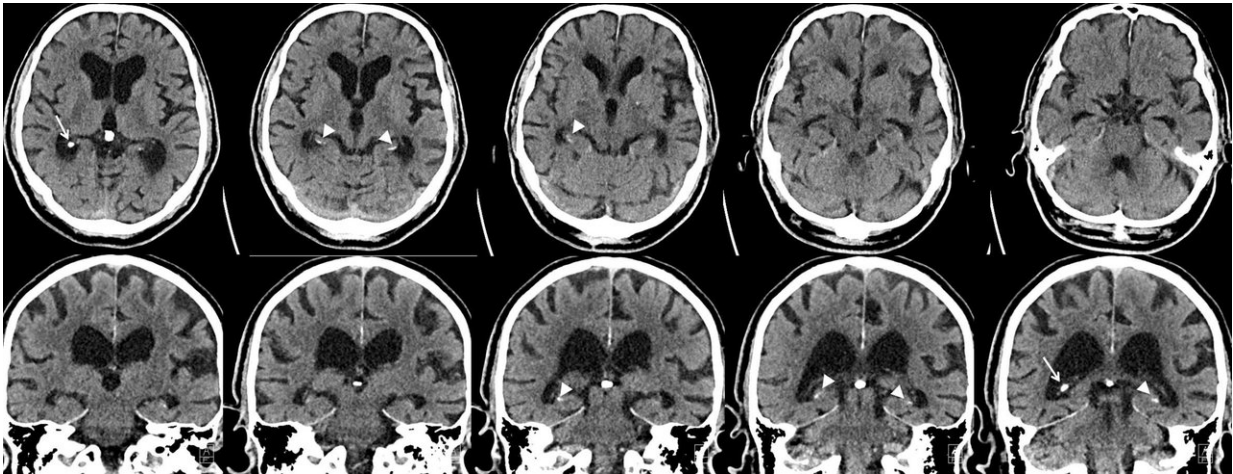
People who smoke or have diabetes may be at increased risk of calcifications in a region of the brain crucial to memory, according to a new study published online in the journal *Radiology*.

Dementia is a major public health problem that affects tens of millions of people worldwide. One focus of dementia research has been the hippocampus, a brain structure important for both short- and long-term memory storage. Alzheimer's disease, the most common type of dementia, is associated with atrophy of the hippocampus.

Researchers have hypothesized that abnormal buildups of calcium, or calcifications, in the hippocampus may be related to vascular problems that could contribute to [hippocampal atrophy](#) and subsequent cognitive deterioration. However, published research on the association between hippocampal [calcification](#) and cognitive impairment is limited.

"We know that calcifications in the hippocampus are common, especially with increasing age," said the study's lead author, Esther J.M. de Brouwer, M.D., a geriatrician at the University Medical Center in Utrecht, the Netherlands. "However, we did not know if calcifications in the hippocampus related to cognitive function."

Advances in imaging have provided opportunities to explore the role of hippocampal calcifications in dementia. The development of multiplanar brain CT scans has enabled better distinction between hippocampal calcifications and calcifications in nearby brain structures like the choroid plexus.



Axial and coronal CT images in 74-year-old woman show moderate hippocampal calcification (arrowheads). Credit: Radiological Society of North America

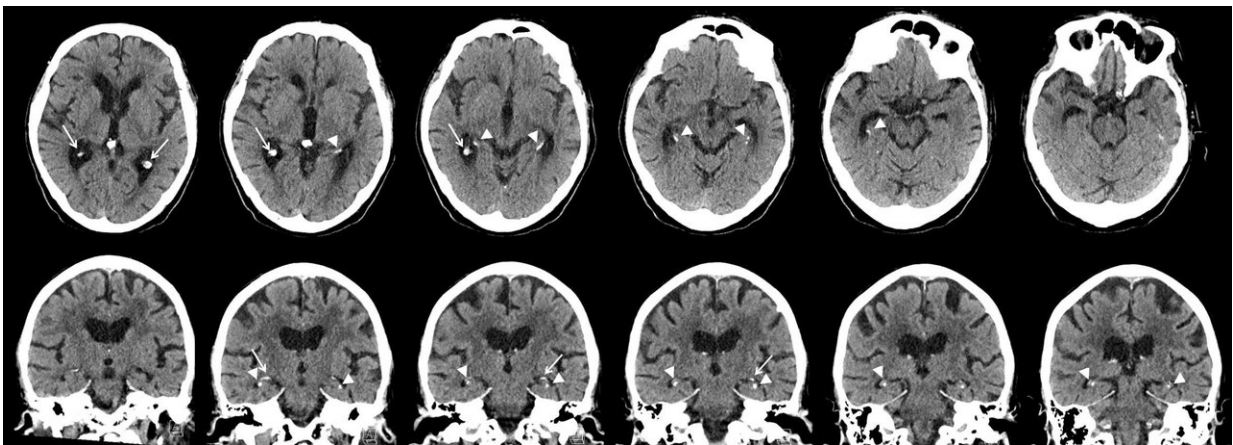
"A multiplanar CT scan makes it possible to see the hippocampus in different anatomical planes; for example, from top to bottom, right to left and front to back," Dr. de Brouwer said. "Before multiplanar CT scans, hippocampal calcifications were often mistaken for choroid plexus calcifications. So with multiplanar CT scans, hippocampal calcifications are better distinguished from calcifications in other areas."

Dr. de Brouwer and colleagues studied the association between vascular risk factors like high blood pressure, diabetes and smoking, and hippocampal calcifications. They also assessed the effects of calcifications on cognitive function.

The study group included 1,991 patients, average age 78 years, who had visited a memory clinic at a Dutch hospital between 2009 and 2015. The patients had a standard diagnostic workup including cognitive tests and brain CT scans. The researchers analyzed the CT scans for the presence and severity of hippocampal calcifications.

Of the 1,991 patients, 380, or 19.1 percent, had hippocampal calcifications. Older age, diabetes and smoking were associated with an increased risk of hippocampal calcifications on CT scans.

While the study was not designed to conclusively determine if smoking and diabetes increase the risk of hippocampal calcifications, the results strongly suggest a link.



Axial and coronal CT images in 76-year-old man show severe hippocampal calcification (arrowheads). Credit: Radiological Society of North America

"We do think that smoking and diabetes are risk factors," Dr. de Brouwer said. "In a recent histopathology study, hippocampal calcifications were found to be a manifestation of vascular disease. It is well known that smoking and diabetes are risk factors for cardiovascular disease. It is, therefore, likely that smoking and [diabetes](#) are [risk factors](#) for hippocampal calcifications."

There was no link between the presence and severity of hippocampal calcifications and cognitive function; a surprising finding, according to

Dr. de Brouwer, with several possible explanations.

"The [hippocampus](#) is made up of different layers, and it is possible that the calcifications did not damage the hippocampal structure that is important for memory storage," she said. "Another explanation could be the selection of our study participants, who all came from a memory clinic."

The researchers plan to carry out additional studies in different groups of people to better understand possible links between these calcifications and cognitive problems.

More information: "Hippocampal Calcifications: Risk Factors and Association with Cognitive Function," *Radiology*, 2018.

Provided by Radiological Society of North America

Citation: Smoking and diabetes linked to brain calcifications (2018, June 12) retrieved 20 March 2024 from <https://medicalxpress.com/news/2018-06-diabetes-linked-brain-calcifications.html>

| |
|--|
| <p>This document is subject to copyright. Apart from any fair dealing for the purpose of private study or research, no part may be reproduced without the written permission. The content is provided for information purposes only.</p> |
|--|