

Mutation links bipolar disorder to mitochondrial disease

June 11 2018



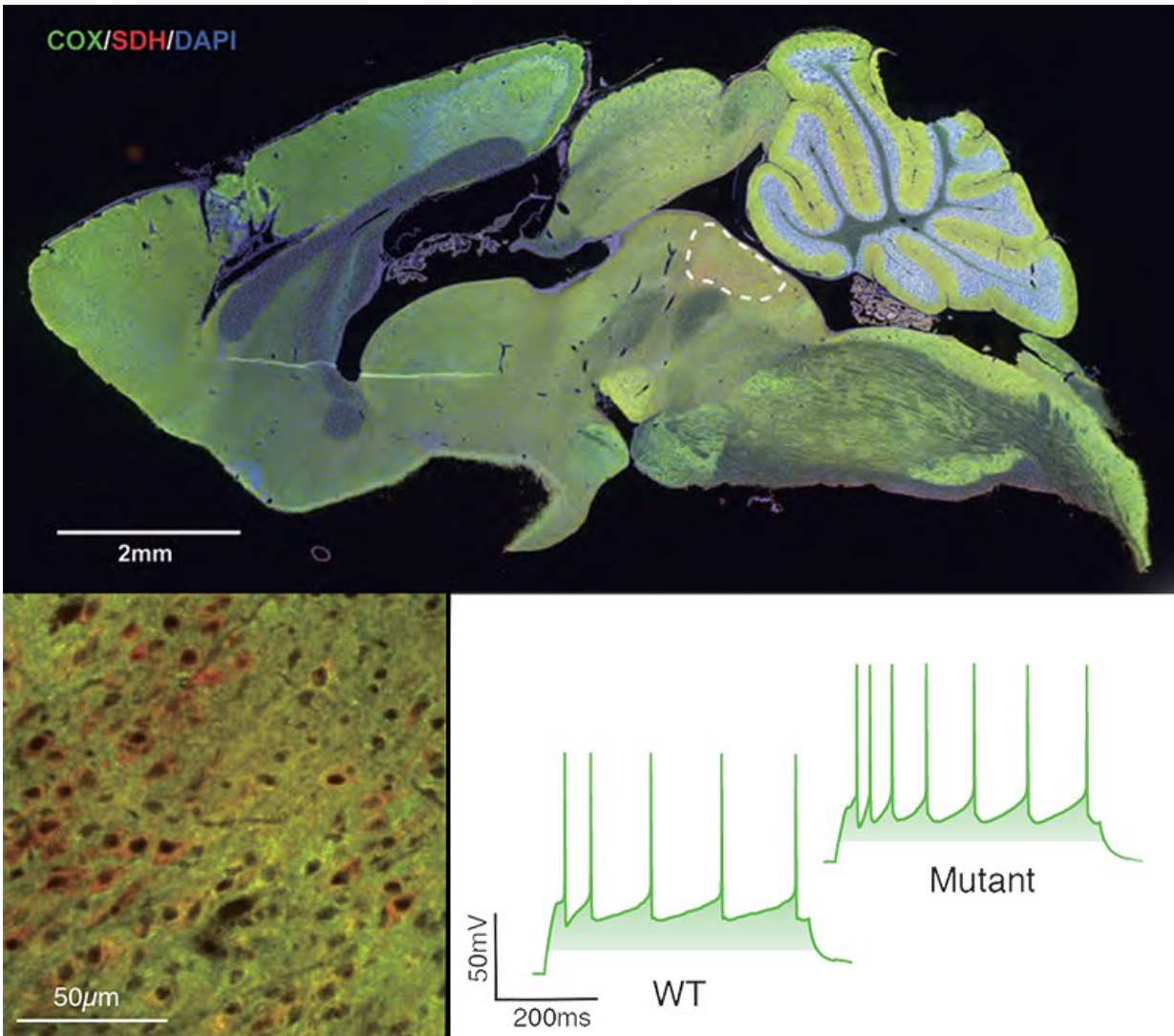
Abstract rendition of the paper's themes. Mutations in the gene *ANT1* may confer a risk for bipolar disorder through a complex interplay between serotonin and mitochondrial signaling in the brain. Credit: Milena Menezes Carvalho/RIKEN National Science Institute

Mutations in the gene *ANT1* may confer a risk for bipolar disorder through a complex interplay between serotonin and mitochondrial

signaling in the brain. These two pathways have been separately implicated in bipolar disorder, but the link between levels of the neurotransmitter serotonin and mitochondrial dysfunction had not been established. Researchers at the RIKEN Center for Brain Science (CBS) in Japan now report that mitochondrial dysfunction affects the activity of serotonergic neurons in mice with mutations of ANT1.

Mitochondria are the vital organelles that deliver energy to all cells and mitochondrial damage has been found, for example, in brain imaging of bipolar patients and in post-mortem brains. Roughly 20 percent of patients with [mitochondrial disease](#) also have [bipolar disorder](#), a major psychiatric disease characterized by manic and depressive episodes. Altered serotonin functioning, on the other hand, seems to be involved in bipolar disorder because drugs that target [serotonin levels](#) can effectively treat the condition. "Our study suggests that mitochondrial dysfunction can alter activity of [serotonergic neurons](#) in bipolar disorder, and this is the first time these two lines of evidence have been linked," says Tadafumi Kato, research group leader at CBS. The research was published on June 8 in the journal *Molecular Psychiatry*.

The study started by identifying ANT1 mutations in patients with bipolar disorder. Kato and colleagues then looked at mice lacking the ANT1 gene in the brain only. Compared with non-mutant mice, the mitochondria in these knockout mice could not retain calcium and had leakier pores. The ANT1-mutant mice also showed lower impulsivity in behavior tests, and consistent with this, their brains showed elevated serotonin turnover. This hyper-serotonergic state is likely a result of a cascade of changes that starts with the loss of the ANT1 gene and the resulting dysfunctional mitochondria. Enhanced serotonergic activity may then further impair mitochondria in a vicious cycle.



Immunohistochemical and electrophysiological analysis. (top) whole mouse brain, the dotted region is the dorsal raphe where COX-negative cells were more numerous in the mutants. (bottom left). Close-up of the dorsal raphe. COX-negative cells are red. (bottom right) Electrophysiological analysis showed that serotonergic neurons in the mutant dorsal raphe were more excitable than in wildtype mice. Credit: RIKEN National Science Institute

Serotonergic neurons were found to deteriorate in a brain area called the dorsal raphe, which is a region also affected in Parkinson's

disease—another condition that may have its roots in mitochondrial dysfunction. The ANT1 mutation does not cause bipolar disorder, says Kato, but is associated with elevated risk. The implication of this research is that emerging therapies for the underlying [mitochondrial dysfunction](#) could one day treat bipolar disorder more successfully than today's variable serotonin-targeting drugs.

More information: Tomoaki M. Kato et al, Ant1 mutant mice bridge the mitochondrial and serotonergic dysfunctions in bipolar disorder, *Molecular Psychiatry* (2018). [DOI: 10.1038/s41380-018-0074-9](https://doi.org/10.1038/s41380-018-0074-9)

Provided by RIKEN

Citation: Mutation links bipolar disorder to mitochondrial disease (2018, June 11) retrieved 26 April 2024 from <https://medicalxpress.com/news/2018-06-mutation-links-bipolar-disorder-mitochondrial.html>

<p>This document is subject to copyright. Apart from any fair dealing for the purpose of private study or research, no part may be reproduced without the written permission. The content is provided for information purposes only.</p>
--