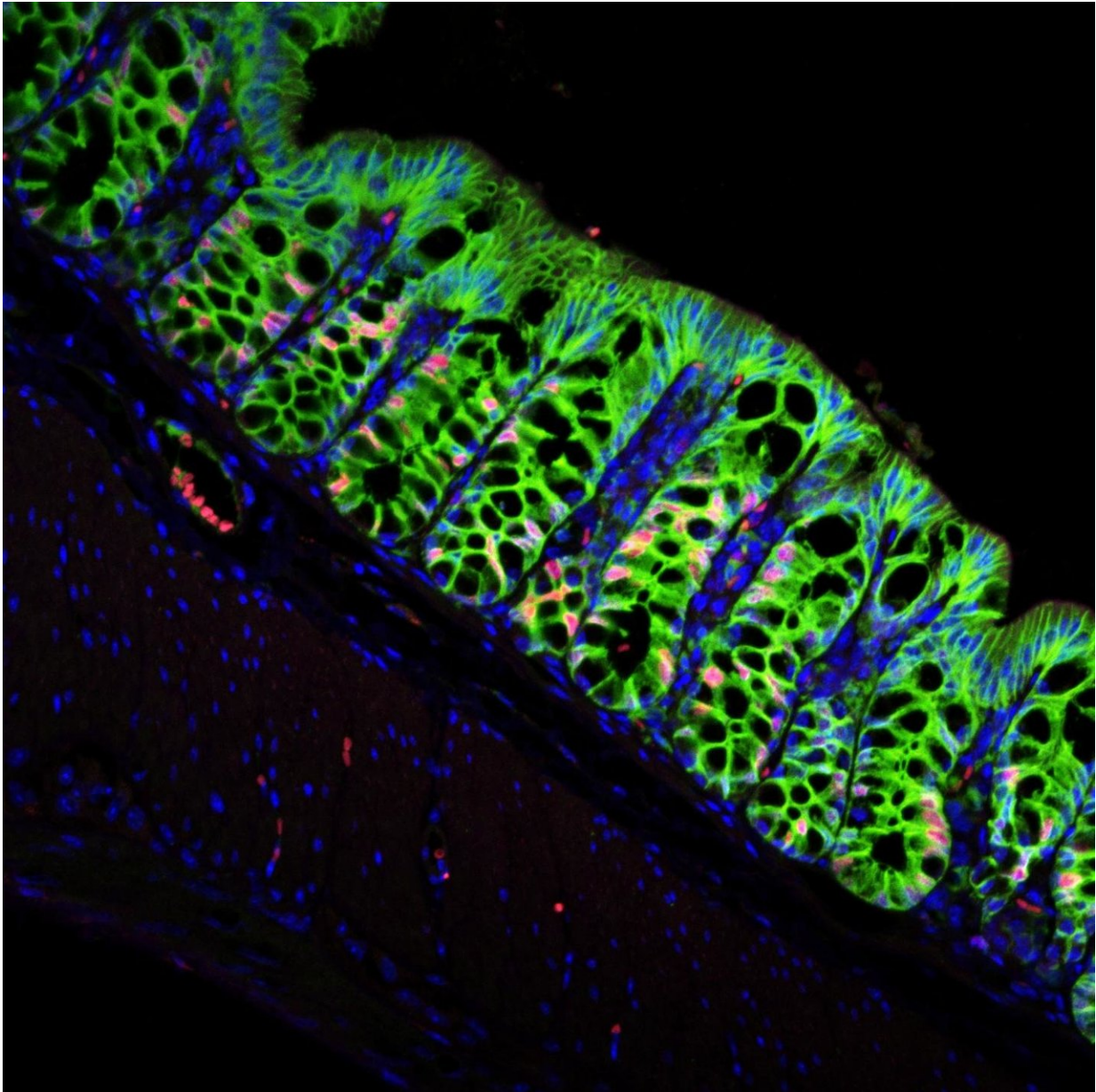


# Stem-cell niche for 10 billion colon cells a day

June 6 2018

---



In a mouse with a functioning stem cell niche, the large intestine consists of

numerous villi and crypts. Credit: Bahar Degirmenci, UZH

Researchers at the University of Zurich have discovered the identity of the stem-cell niche of the colon. The niche comprises special cells that activate the stem cells of the adjacent intestinal epithelium and are responsible for its continuous renewal. Without the activation signal, the epithelium perishes. If it's constantly activated, early stages of cancer develop. The discovery helps to improve our understanding of intestinal cancer and inflammation.

The human intestine constantly renews itself. Alone in the colon—the last 1.5 meters of the gastrointestinal tract—10 billion epithelial [cells](#) are replaced each day. The intestinal [epithelium](#) is the layer of cells that forms the lining of both the small and large intestine and is responsible for absorbing nutrients. The regeneration process is driven by [stem cells](#) that are found in small folds of the epithelium (crypts), where they are in contact with other cells that produce the signals needed to drive regeneration. The key activating signal that sustains the stem cells is called "Wnt".

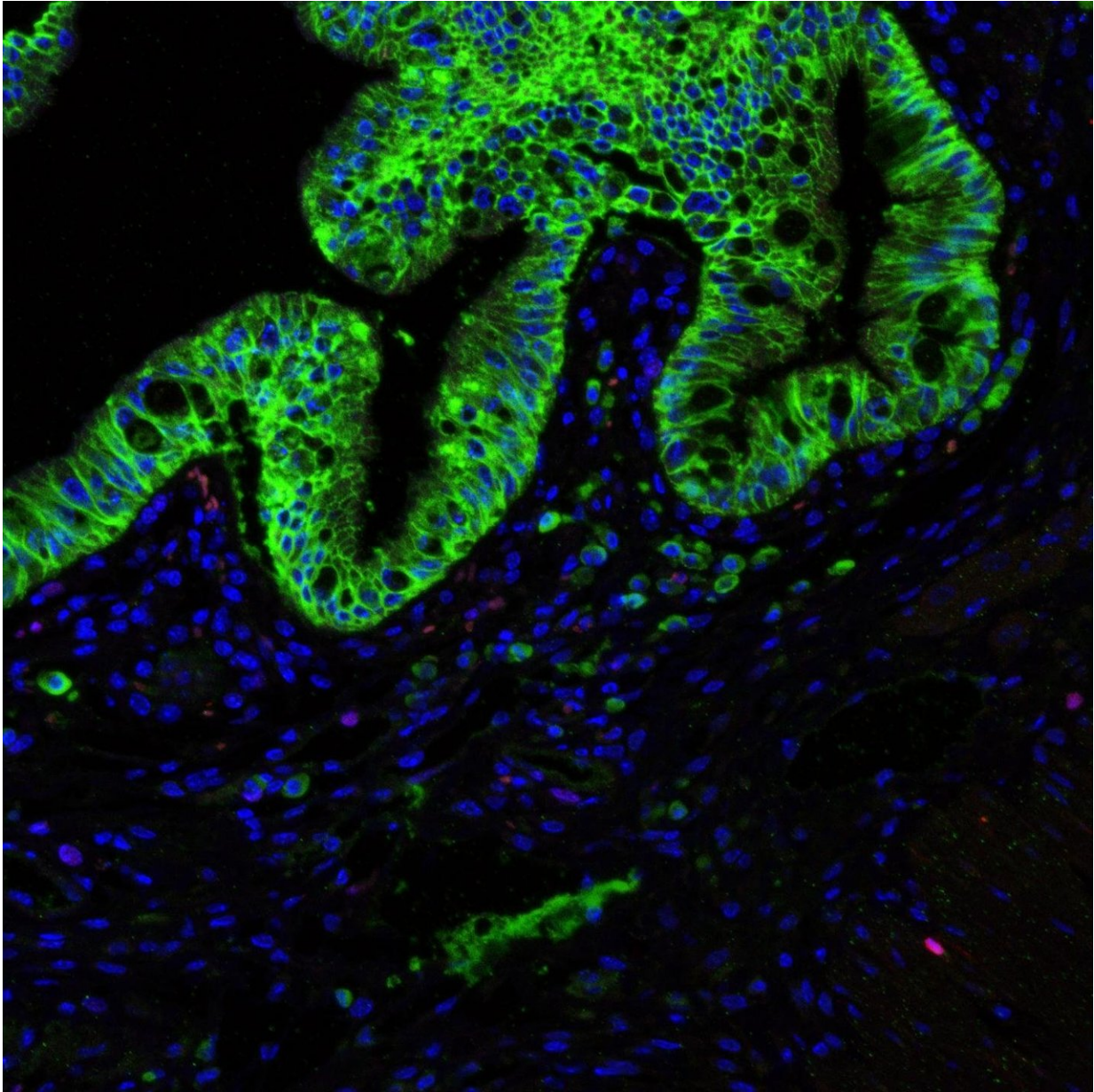
## **Colon stem cells perish without signaling**

A group of UZH researchers, including Konrad Basler from the Institute of Molecular Life Sciences, have now discovered the cells responsible for providing the activating signal to the stem cells. These so-called Gli1-positive cells surround the crypts in the epithelium and thereby form the stem-cell niche. The scientists performed studies in mice to demonstrate that these cells play an essential role in forming and repairing the intestinal epithelium. "If the Gli1-positive cells are eliminated or unable to secrete Wnt proteins, the activation signal is lost. Consequently the colon's stem cells as well as the epithelium will perish,

and the organism dies," says Basler.

## **Long-term constant activation leads to colon cancer**

Just how critical a well-balanced regulation of the intestinal epithelium is also becomes evident when stem cells are driven to constantly divide. If Wnt signaling is stimulated excessively, the stem cells divide in an uncontrolled manner. "Mice with mutations in the Wnt signaling pathways develop polyps, from which [colon cancer](#) later develops," adds the molecular biologist. This is also the case for humans.

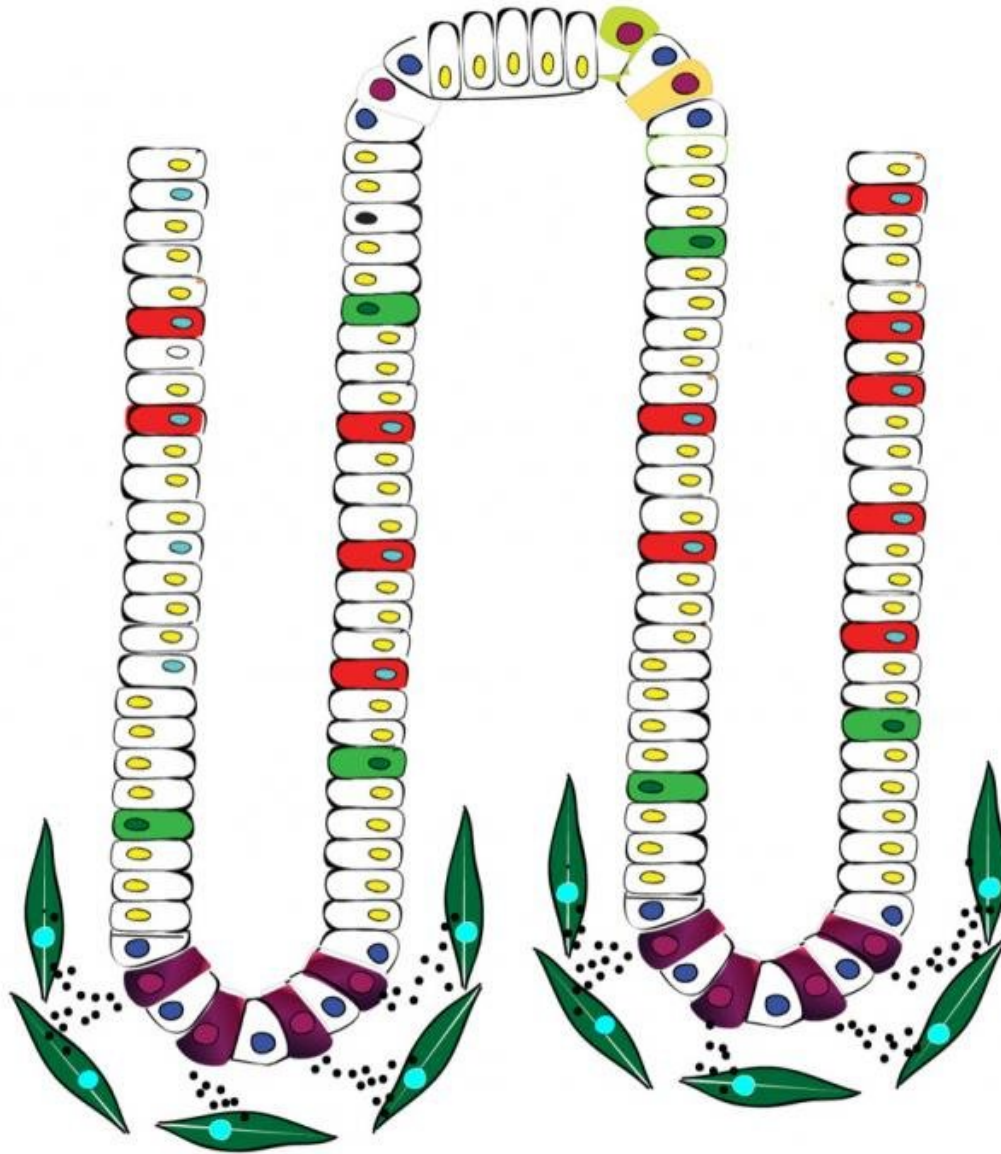


In a mouse without a functioning stem cell niche, the villi and crypts of the large intestine get lost. Credit: Bahar Degirmenci, UZH

### **Niche cells are also responsible for tissue repair**

In further tests, the researchers examined the behavior of the cells in the

stem-cell niche in response to inflammation of the colon. In this situation, many more [epithelial cells](#) are lost than in healthy animals. The need for new cells is therefore greater, since the tissue not only has to be maintained but also repaired. The researchers observed that the amount of Gli1-positive cells increased significantly in response to an inflamed colon. "The cells we've discovered are thus not only essential for healthy organisms, but are also essential when it comes to repairing a damaged [intestinal epithelium](#)," says Basler. The discovery and description of the colon's stem-cell niche therefore has relevance for a whole string of intestinal diseases, from inflammation to [cancer](#).



Schematic representation of the large intestine with GLI1-positive cells in the stem cell niche (bottom, green). Credit: Bahar Degirmenci, UZH

**More information:** Bahar Degirmenci et al, GLI1-expressing mesenchymal cells form the essential Wnt-secreting niche for colon stem

cells, *Nature* (2018). [DOI: 10.1038/s41586-018-0190-3](https://doi.org/10.1038/s41586-018-0190-3)

Provided by University of Zurich

Citation: Stem-cell niche for 10 billion colon cells a day (2018, June 6) retrieved 19 April 2024 from <https://medicalxpress.com/news/2018-06-stem-cell-niche-billion-colon-cells.html>

This document is subject to copyright. Apart from any fair dealing for the purpose of private study or research, no part may be reproduced without the written permission. The content is provided for information purposes only.