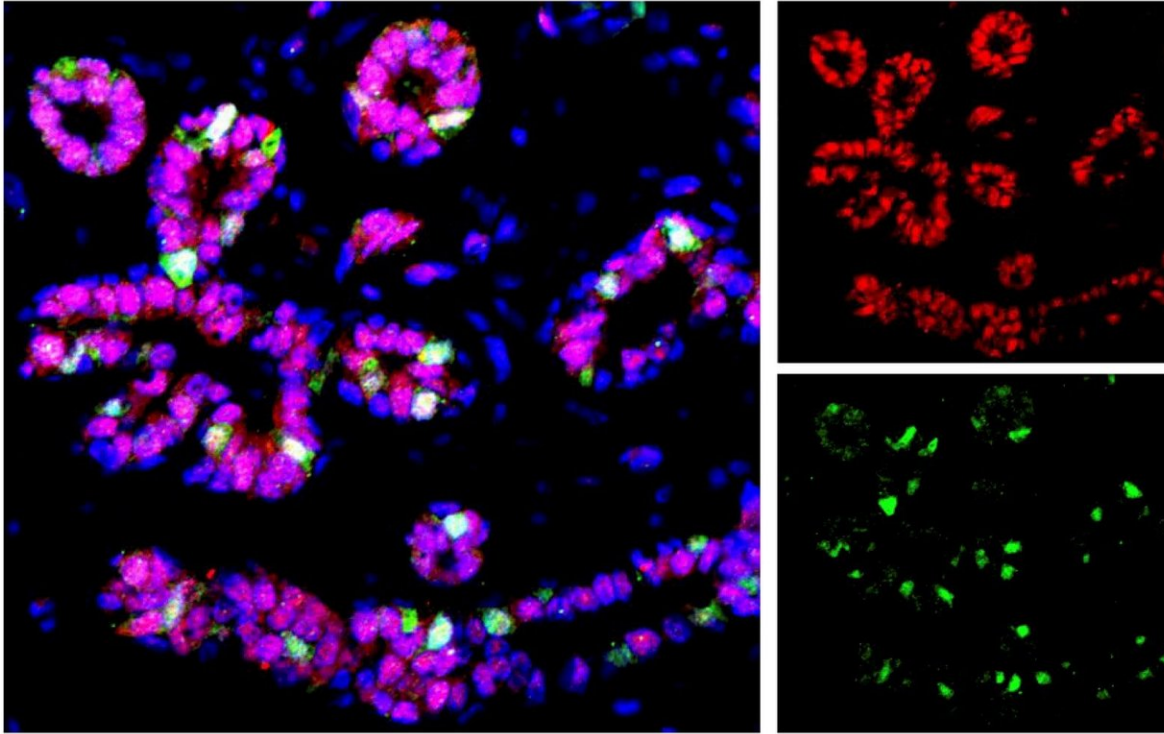


Researchers uncover cell types of the human breast epithelium

June 1 2018



Using a next generation sequencing technology in combination with single-cell mRNA sequencing (scRNAseq), researchers from UCI and UCSF, created a high-resolution molecular census of human breast epithelial cells and identified three previously unseen subpopulations of basal and luminal cells. (The two newly discovered luminal cell types are shown in green and red in the image. The nuclei are shown in blue.) This discovery will aid in the understanding of the origins of breast cancer and may lead to improved early cancer detection, a slowing of cancer progression and possibly cancer prevention. Credit: Kai Kessenbrock, PhD

Researchers from the University of California, Irvine School of Medicine, in collaboration with scientists at UCSF and Northwestern University, have profiled human breast epithelial cells, identifying three new distinct epithelial cell populations. The discovery of these cell populations could aid in understanding the origins of breast cancer and lead to improved early cancer detection, a slowing of cancer progression and possibly even cancer prevention.

The study, published in *Nature Communications*, was led by UCI biomedical researcher Kai Kessenbrock, Ph.D., assistant professor of biological chemistry, and titled, "Profiling human breast epithelial [cells](#) using single cell RNA sequencing identifies cell diversity." The researchers used a next generation sequencing technology in combination with single-cell mRNA sequencing (scRNAseq) to create a high-resolution molecular census of human breast epithelial cells. The scRNAseq technology enabled the recognition of previously unseen cellular differences.

Breast [cancer](#) arises from breast epithelial cells that acquire genetic alterations. These alterations lead to cellular changes within the breast

tissue that eventually develop into cancer. Understanding the origins of [breast cancer](#), in its earliest phases, has the potential to improve methods of early cancer detection and may ultimately form the basis to prevent [cancer progression](#) before it turns into a life-threatening disease.

"Even with all of the research that has been done, gaps still exist in our understanding of the full spectrum of cellular diversity that exists in the human body and, specifically, the distinct cell types that comprise the human breast epithelium. These gaps hinder our ability to investigate the role of different cells in cancer initiation and progression. Our discovery of the three epithelial cell populations closes some of those gaps and may help us understand how the system goes awry during breast cancer," said Kessenbrock.

"Our analysis provides unprecedented insights into the diverse cellular populations that exist within the normal human breast epithelium and will serve as a valuable resource to understand how the system changes during the early stages of breast cancer and as the disease progresses," Kessenbrock added.

The breast epithelium is composed of two known cell types, an inner layer of secretory luminal cells and an outer layer of basal/myoepithelial cells. UCI researchers analyzed the single-cell gene signatures from seven human individuals to reveal that there is a third distinct cell type hidden within the luminal compartment, which can now be distinguished as L1- and L2-type luminal cells. The researchers found that the L1-type represents a secretory cell type, whereas L2-type cells function as hormone-sensing components within the [breast tissue](#).

Knowledge of these distinct subpopulations of breast epithelial cells may serve as a starting point to reconstruct the origins for the different subtypes of breast cancer. Their work will serve as a resource to map out the defined changes occurring during [breast](#) cancer and potential areas of

improvement for methods of cancer early detection and possibly strategies for cancer prevention.

More information: Quy H. Nguyen et al, Profiling human breast epithelial cells using single cell RNA sequencing identifies cell diversity, *Nature Communications* (2018). [DOI: 10.1038/s41467-018-04334-1](https://doi.org/10.1038/s41467-018-04334-1)

Provided by University of California, Irvine

Citation: Researchers uncover cell types of the human breast epithelium (2018, June 1) retrieved 4 April 2024 from <https://medicalxpress.com/news/2018-06-uncover-cell-human-breast-epithelium.html>

<p>This document is subject to copyright. Apart from any fair dealing for the purpose of private study or research, no part may be reproduced without the written permission. The content is provided for information purposes only.</p>
--