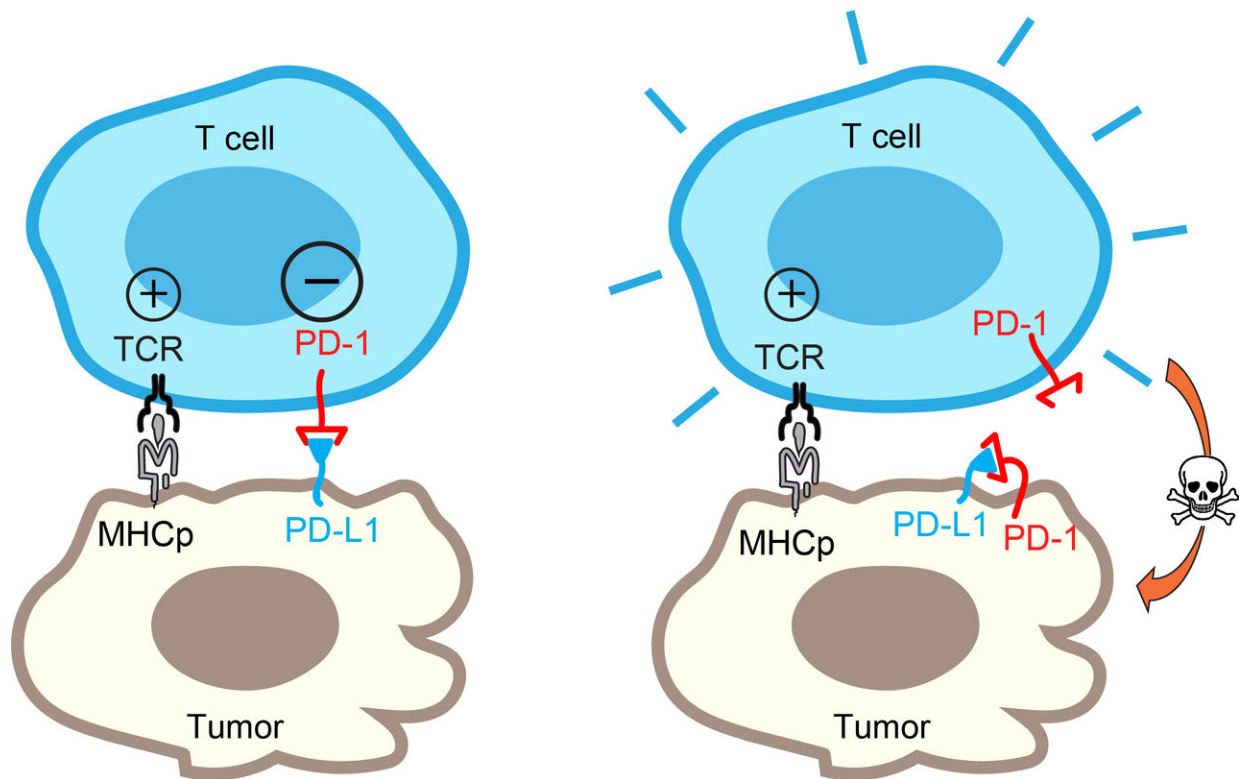


Biologists discover process that neutralizes tumors

July 10 2018



The molecular "brake" known as PD-1 can bind and neutralize the same tumor cell, instead of an opposing tumor cell. Credit: Hui Lab, UC San Diego

Researchers from the University of California San Diego have identified an unexpected mechanism that could help determine whether a cancer patient will respond to immunotherapy.

Ideally, the immune system identifies tumors as threatening elements and deploys immune [cells](#) (T cells) to find and kill them. However, tumor cells have evolved to employ a protein called PD-L1 to blind T cells from carrying out their functions and evade immune defenses. PD-L1 protects tumor cells by activating a "molecular brake" known as PD-1 to stop T cells.

In important therapeutic progress, antibodies developed to block PD-L1/PD-1 have been clinically proven to benefit certain cancer patients. Yet why some patients don't respond to such therapy has remained a mystery. Now, UC San Diego's Yunlong Zhao, Enfu Hui and their colleagues at the University of Chicago and the Nanjing Medical School in China have uncovered some clues.

As described July 10 in the journal *Cell Reports*, the researchers discovered an unexpected twist in the tumor versus T cell battle. Some tumor cells display not only their PD-L1 weapon, but also the PD-1 "brake." This simultaneous expression leads PD-1 to bind and neutralize PD-L1 on the same tumor cell. Thus, the PD-L1 on these tumor cells can no longer engage the PD-1 brake on T cells.

"It's a very exciting finding," said Hui. "Our study uncovered an unexpected role of PD-1 and another dimension of PD-1 regulation with important therapeutic implications."

This study suggests that patients with high levels of PD-1 on [tumor cells](#) may not respond well to the blocking antibodies because the PD-1 pathway is self-canceled. In these [patients](#), mechanisms other than PD-L1/PD-1 are likely employed by the tumors to escape from immune destruction.

Looking to extend the immunotherapy potential of the finding, Hui and his colleagues are now seeking to determine additional mechanisms of

"self-cancellation" at the interface of the [tumor](#) and immune cells.

"We think that our finding is the tip of the iceberg," said Hui, recently named a Pew Biomedical Scholar and Searle Scholar. "We speculate that self-cancellation is a general mechanism to regulate [immune cell function](#). Understanding these processes more clearly will help develop better immunotherapy strategies and more reliably predict whether a patient will respond or not."

Provided by University of California - San Diego

Citation: Biologists discover process that neutralizes tumors (2018, July 10) retrieved 3 May 2024 from <https://medicalxpress.com/news/2018-07-biologists-neutralizes-tumors.html>

<p>This document is subject to copyright. Apart from any fair dealing for the purpose of private study or research, no part may be reproduced without the written permission. The content is provided for information purposes only.</p>
--