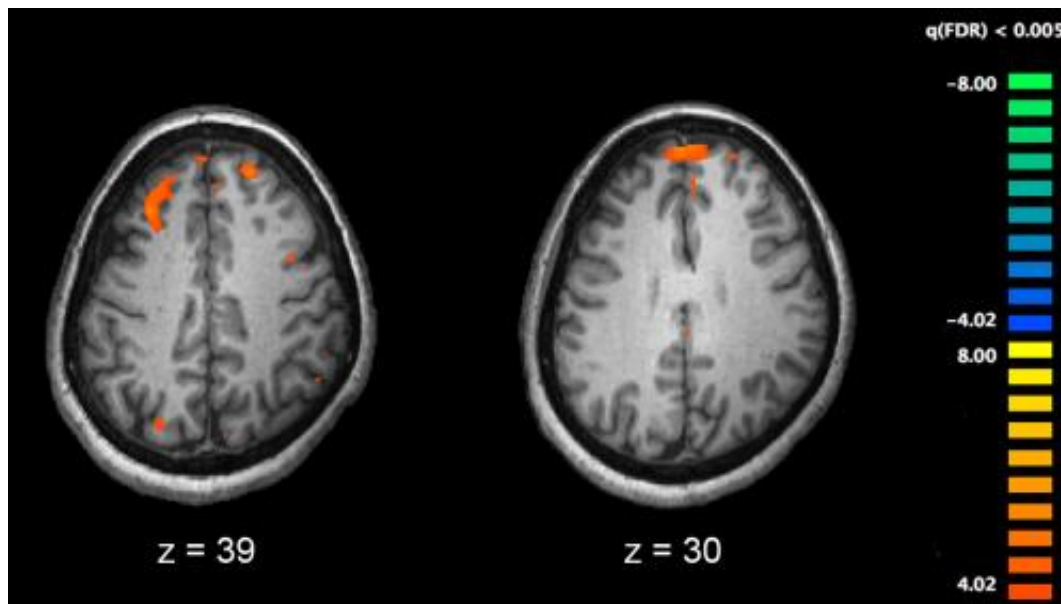


Stress affects people with schizophrenia differently, study shows

July 11 2018



Functional magnetic resonance imaging (fMRI) and other brain imaging technologies allow for the study of differences in brain activity in people diagnosed with schizophrenia. The image shows two levels of the brain, with areas that were more active in healthy controls than in schizophrenia patients shown in orange, during an fMRI study of working memory. Credit: Kim J, Matthews NL, Park S./PLoS One.

Stressful situations affect the brain and body differently in people with schizophrenia compared to people without the mental illness or individuals at high risk for developing psychosis, a new CAMH study shows. The relationship between two chemicals released when people

experienced stress—one released in the brain and the other in saliva—differs in people with schizophrenia. The discovery, recently published in the journal *Brain*, may provide clues into how to act early to prevent schizophrenia.

"We found a disrupted [stress](#) response in people with [schizophrenia](#), which did not occur in either healthy individuals or people at clinical high risk for developing psychosis," says Dr. Christin Schifani, Postdoctoral Research Fellow in the Research Imaging Centre in CAMH's Campbell Family Mental Health Research Institute, and lead author of the study.

As most people with schizophrenia experience psychosis, identifying differences between people at high risk for psychosis and those with schizophrenia may shed light on how schizophrenia develops and ways to prevent its onset.

"The fact we see this disrupted [stress response](#) in people with schizophrenia, but not in people at high risk for psychosis, suggests an opportunity to intervene to prevent schizophrenia," says Dr. Romina Mizrahi, Clinician Scientist in the Campbell Institute at CAMH, and senior author of the study. "Developing strategies to cope with stress and build resilience may be the opportunity."

Dr. Mizrahi leads the Focus on Youth Psychosis Prevention (FYPP) Clinic and research program at CAMH, which is dedicated to the early identification and treatment of people aged 16 to 35 who are at high risk of developing psychosis. Helping people to identify sources of stress and adopt coping strategies is a key focus of the clinic's work. Assessing the impact of stress management strategies to reduce psychosis and schizophrenia risks will be a goal of future research.

In the current study, these new insights come from examining two

important chemical messengers—dopamine and cortisol—in people under stress. Dopamine is a neurotransmitter, a chemical that carries signals from one brain cell, or neuron, to another. In this study, the researchers focused on dopamine released in the [prefrontal cortex](#), the region at the front of the brain involved in complex functions, including regulating emotions. Cortisol is a hormone, released from the adrenal glands to help the body handle stressful situations.

In healthy individuals, both dopamine and [cortisol levels](#) typically increase when people experience stress. This link between dopamine release and cortisol release did not appear in people with schizophrenia. "Cortisol is the main stress hormone, so this suggests a disrupted stress regulatory system in people with schizophrenia," says Dr. Mizrahi.

To investigate responses to stress, the researchers used a math test. In the first stage of the study, participants answered math questions on a computer screen without any time limit while a positron emission tomography (PET) scanner produced an image of dopamine in their brain as they completed the task. In the second stage—the stress test—participants answered math questions under time constraints and while receiving negative verbal feedback, also in the PET scanner. Saliva samples were collected during both stages to measure cortisol levels. The study included 14 people with schizophrenia, 14 people at clinical high risk for psychosis and 12 people without mental illness.

The findings build on Dr. Mizrahi's [earlier research](#) in another region of the brain, the striatum. "Our previous research had shown that people at high risk for psychosis and those experiencing a first episode of psychosis have abnormal, or increased dopamine release in response to stress in the striatum," says Dr. Mizrahi. "Since the prefrontal cortex is involved in regulating striatal dopamine release, we wanted to understand what was happening in the step before the striatum."

But, contrary to what they had expected, the researchers did not find significant differences in [dopamine](#) release in the prefrontal cortex among the three groups of participants. "Our findings of an increase in [dopamine release](#) in the striatum, but not in the cortex, show the complex brain regulatory systems in both people at [high risk](#) for psychosis and [people](#) with schizophrenia," says Dr. Mizrahi.

More information: Christin Schifani et al, Cortical stress regulation is disrupted in schizophrenia but not in clinical high risk for psychosis, *Brain* (2018). [DOI: 10.1093/brain/awy133](https://doi.org/10.1093/brain/awy133)

Provided by Centre for Addiction and Mental Health

Citation: Stress affects people with schizophrenia differently, study shows (2018, July 11)
retrieved 3 May 2024 from
<https://medicalxpress.com/news/2018-07-stress-affects-people-schizophrenia-differently.html>

<p>This document is subject to copyright. Apart from any fair dealing for the purpose of private study or research, no part may be reproduced without the written permission. The content is provided for information purposes only.</p>
--