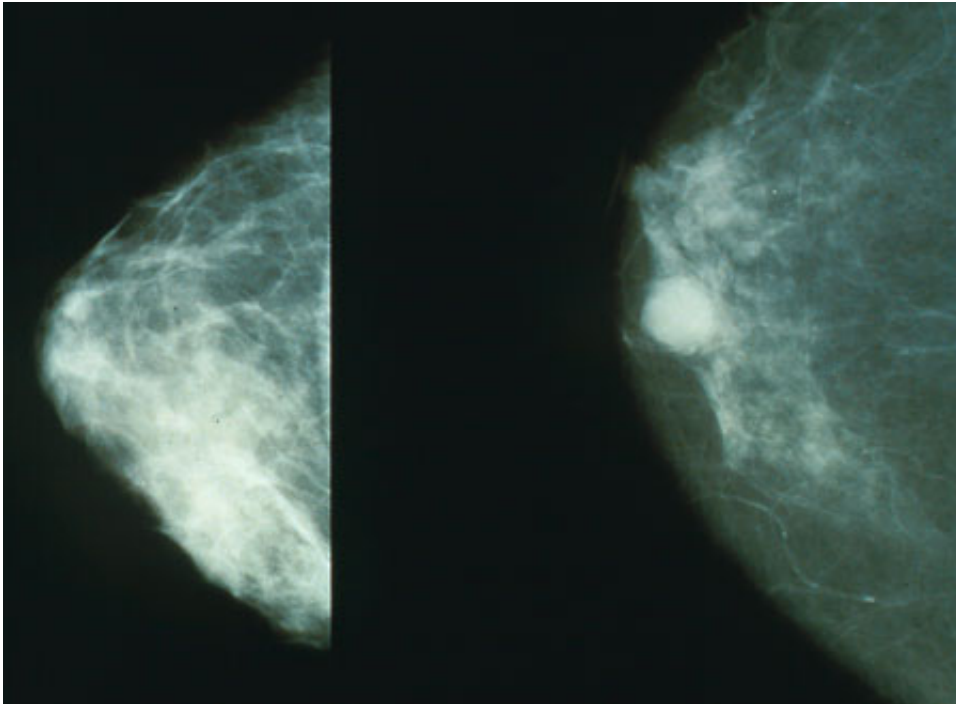


Shades of grey reveal breast tumours

September 20 2018, by David Bradley



Mammograms showing a normal breast (left) and a breast with cancer (right).
Credit: Public Domain

Breast cancer is the second most common cancer in women. Mammography is the best imaging technology for early detection of tumours in breast tissue.

Now, researchers in India have developed a new approach to the classification of abnormalities in the breast using a decision tree based on GLCM (grey level co-occurrence matrices). This allows useful

texture and statistical features to be extracted from a medical image based on the pixel "brightness" value in the digital image.

In the new approach noise is reduced following data acquisition using pre-processing and then the image is examined using the GLCM technique to help discern between benign and malignant tissue seen in the mammogram.

More information: J. Kamalakannan et al. Classification of breast abnormality using decision tree based on GLCM features in mammograms, *International Journal of Computer Aided Engineering and Technology* (2018). [DOI: 10.1504/IJCAET.2018.10013711](https://doi.org/10.1504/IJCAET.2018.10013711)

Provided by Inderscience

Citation: Shades of grey reveal breast tumours (2018, September 20) retrieved 26 April 2024 from <https://medicalxpress.com/news/2018-09-grey-reveal-breast-tumours.html>

This document is subject to copyright. Apart from any fair dealing for the purpose of private study or research, no part may be reproduced without the written permission. The content is provided for information purposes only.