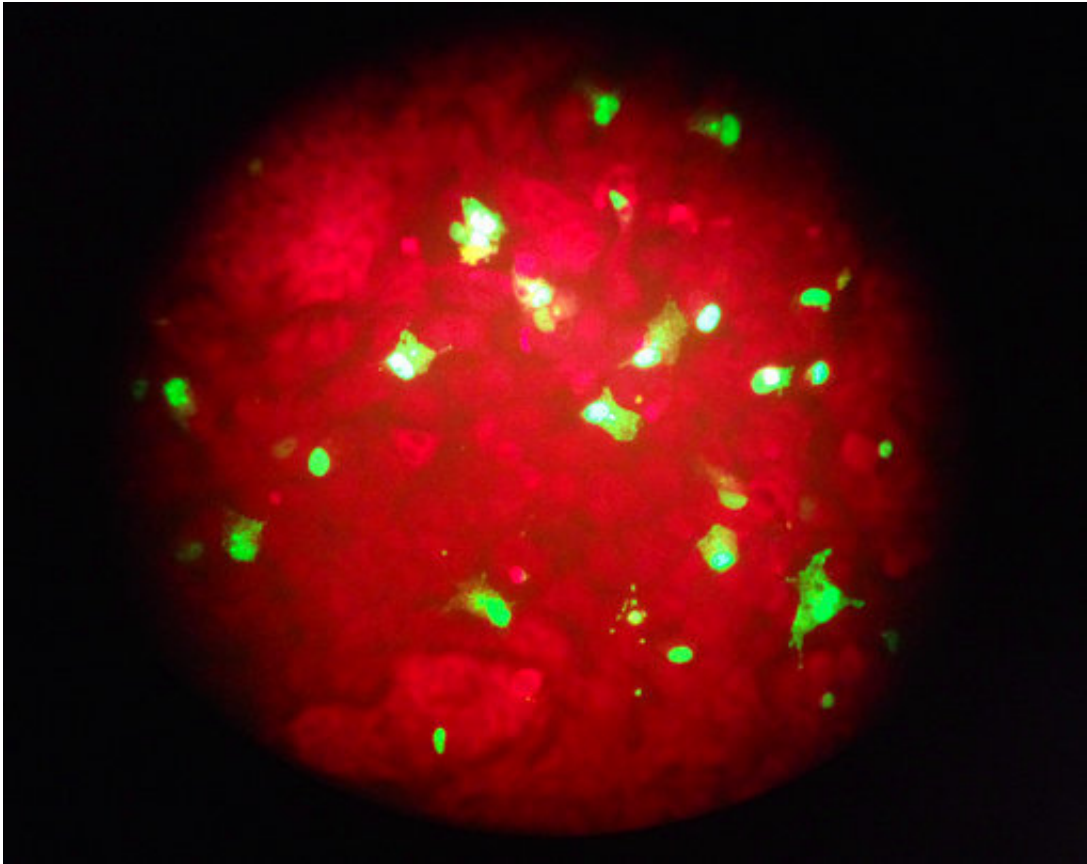


80,000 people died of flu last winter in US

September 26 2018, by Mike Stobbe



In this Feb. 26, 2015 photo taken through the eyepiece of a microscope, human cells infected with the flu virus glow green under light from a fluorescence microscope at a laboratory in Seattle. The U.S. government estimates that 80,000 Americans died of flu and flu complications in the winter of 2017-2018 - the highest flu-related death toll in at least four decades. (AP Photo/Ted S. Warren)

An estimated 80,000 Americans died of flu and its complications last

winter—the disease's highest death toll in at least four decades.

The director of the Centers for Disease Control and Prevention, Dr. Robert Redfield, revealed the total in an interview Tuesday night with The Associated Press.

Flu experts knew it was a very bad season, but at least one found the size of the estimate surprising.

"That's huge," said Dr. William Schaffner, a Vanderbilt University vaccine expert. The tally was nearly twice as much as what health officials previously considered a bad year, he said.

In recent years, flu-related deaths have ranged from about 12,000 to 56,000, according to the CDC.

Last fall and winter, the U.S. went through one of the most severe flu seasons in recent memory. It was driven by a kind of flu that tends to put more people in the hospital and cause more deaths, particularly among young children and the elderly.

The season peaked in early February and it was mostly over by the end of March.

Making a bad year worse, the flu vaccine didn't work very well. Experts nevertheless say vaccination is still worth it because it makes illnesses less severe and save lives.

"I'd like to see more people get vaccinated," Redfield told the AP at an event in New York. "We lost 80,000 people last year to the flu."

CDC officials do not have exact counts of how many people die from flu each year. Flu is so common that not all flu cases are reported, and flu is

not always listed on death certificates. So the CDC uses statistical models, which are periodically revised, to make estimates.

Fatal complications from the flu can include pneumonia, stroke and heart attack.

CDC officials called the 80,000 figure preliminary, and it may be slightly revised. But they said it is not expected to go down.

It eclipses the estimates for every flu season going back to the winter of 1976-1977. Estimates for many earlier seasons were not readily available.

Last winter was not the worst flu season on record, however. The 1918 flu pandemic, which lasted nearly two years, killed more than 500,000 Americans, historians estimate.

It's not easy to compare flu seasons through history, partly because the nation's population is changing. There are more Americans—and more elderly Americans—today than in decades past, noted Dr. Daniel Jernigan, a CDC flu expert.

U.S. health officials on Thursday are scheduled to hold a media event in Washington, D.C., to stress the importance of vaccinations to protect against whatever flu circulates this coming winter.

And how bad is it going to be? So far, the flu that's been detected is a milder strain, and early signs are that the vaccine is shaping up to be a good match, Jernigan said.

The makeup of the vaccine has been changed this year to try to better protect against expected strains.

"We don't know what's going to happen, but we're seeing more encouraging signs than we were early last year," Jernigan said.

© 2018 The Associated Press. All rights reserved.

Citation: 80,000 people died of flu last winter in US (2018, September 26) retrieved 8 May 2024 from <https://medicalxpress.com/news/2018-09-people-died-flu-winter.html>

This document is subject to copyright. Apart from any fair dealing for the purpose of private study or research, no part may be reproduced without the written permission. The content is provided for information purposes only.