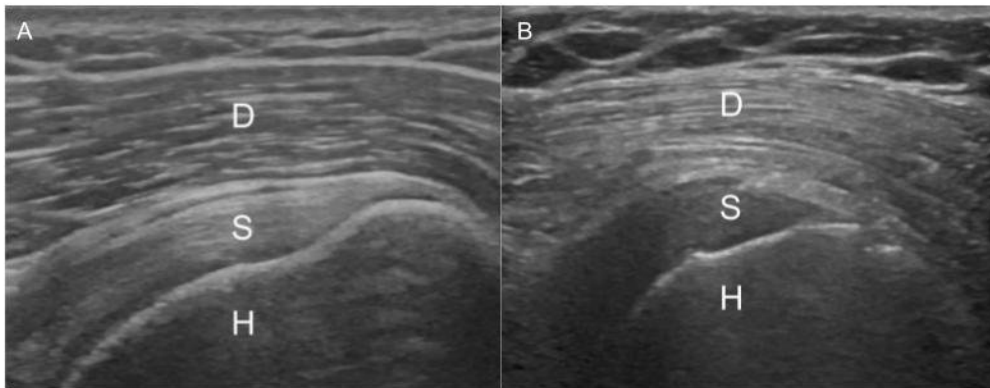


Shoulder 'brightness' on ultrasound may be a sign of diabetes

November 19 2018



Images of the shoulder showing reversal of the rotator cuff to deltoid gradient. Image A displays the normal gradient of the deltoid muscle to the supraspinatus tendon. Image B shows reversal of the normal gradient in a type 2 diabetic patient. D: Deltoid, S: Supraspinatus, H: Humerus Credit: Radiological Society of North America

A shoulder muscle that appears unusually bright on ultrasound may be a warning sign of diabetes, according to a study being presented next week at the annual meeting of the Radiological Society of North America (RSNA).

Ultrasound is commonly used to diagnose sources of pain in the [shoulder](#). More than 10 years ago, musculoskeletal [radiologist](#) Steven B. Soliman, D.O., from Henry Ford Hospital in Detroit, began noticing a pattern when images of the deltoid muscle, the largest muscle of the shoulder, appeared bright on ultrasound.

"Every time we would ask one of these [patients](#) if they were diabetic, they would say 'yes' or they would tell us they were borderline and not taking any medications," Dr. Soliman said.

The observations prompted Dr. Soliman and colleagues at Henry Ford to conduct a study to see if the brightness, or echogenicity, of the shoulder muscle could be predictive of diabetes. The results revealed that by using the echogenicity of the muscle, radiologists were able to predict type 2 diabetes, the most common type of diabetes, in almost nine out of 10 patients. Brightness on ultrasound also was an accurate predictor of pre-diabetes, a condition of abnormally high blood sugar that generally progresses to diabetes without changes in lifestyle.

The researchers said the findings could allow for earlier interventions.

"If we observe this in patients with pre-diabetes and diabetes, we can get them to exercise, make diet modifications and lose weight," Dr. Soliman said. "If these interventions happen early enough, the patients may be able to avoid going on medications and dealing with all the complications that go with the disease."



Image of the normal deltoid muscle in an obese, non-diabetic patient. D - Deltoid, H - Humerus Credit: Radiological Society of North America

For the study, Dr. Soliman and colleagues compiled 137 shoulder ultrasounds from patients with type 2 diabetes, including 13 with pre-diabetes. The researchers also obtained 49 ultrasounds from obese patients without diabetes.

The researchers showed the ultrasounds to two musculoskeletal radiologists who were unaware whether the images came from patients with or without diabetes. The radiologists were asked to classify the patients, based on the brightness of their shoulder muscle, into one of

three categories: normal, suspected diabetes and definite diabetes. A third musculoskeletal radiologist acted as an arbitrator in the cases where the other two radiologists disagreed.

The results showed that a consensus diagnosis of "definite diabetes" by the radiologists was a powerful predictor of diabetic status. Using the shoulder ultrasounds, the radiologists correctly predicted diabetes in 70 of 79 patients, or 89 percent.

"We weren't surprised that we had positive results because the shoulder muscle on patients with diabetes looked so bright on ultrasound, but we were surprised at the level of accuracy," Dr. Soliman said.

A hyperechoic, or unusually bright-looking, deltoid muscle was also a strong predictor of pre-diabetes. The musculoskeletal radiologists assigned all 13 pre-diabetic ultrasounds to either the "suspected diabetes" or "definite diabetes" categories.

"A lot of the patients weren't even aware that they were diabetic or pre-diabetic," said Dr. Soliman, who noted that this lack of awareness is a major problem in the U.S.

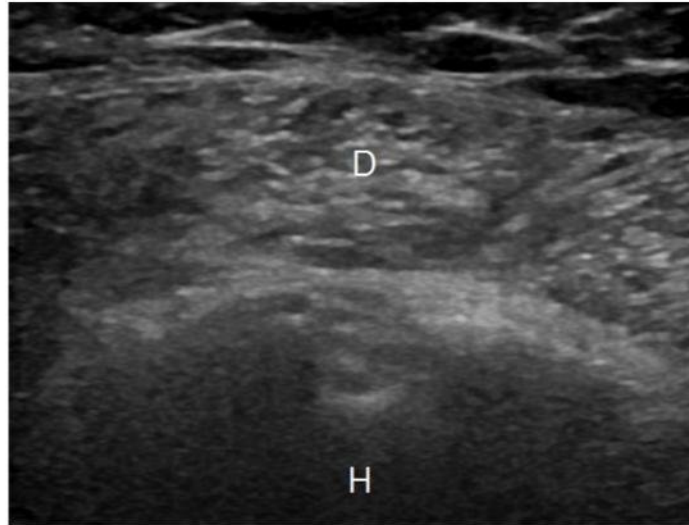


Image of a deltoid muscle in a patient with type 2 diabetes. D - Deltoid, H - Humerus Credit: Radiological Society of North America

According to the Centers for Disease Control and Prevention (CDC), nearly one in four Americans with diabetes—about 7.2 million people—are unaware they have the disease and are left undiagnosed.

"Also, the CDC states that pre-diabetes affects an astonishing 84.1 million adults, or nearly 34 percent of the adult U.S. population, and an overwhelming 90 percent of these people are completely unaware of their pre-diabetic status and are at a high risk of developing type 2 diabetes," Dr. Soliman said.

The reasons for the brighter-appearing shoulder muscle on ultrasound among patients with diabetes is not completely understood, according to Dr. Soliman, but the researchers suspect it is due to low levels of glycogen in the muscle, a key source of energy for the body that is stored primarily in the liver and muscles. A study of muscle biopsies in patients with diabetes found that muscle glycogen levels are decreased up to 65 percent. Prior research has also shown that the muscles of athletes appear brighter on ultrasound after exercise, when their glycogen stores are depleted.

"It could be that this appearance in people with diabetes and pre-diabetes is related to the known problems with glycogen synthesis in their muscles because of their insulin abnormalities," Dr. Soliman said.

If they see a bright shoulder muscle on [ultrasound](#), radiologists at Henry Ford now put notes in their reports indicating that this observation has been linked to diabetes.

The [researchers](#) plan to continue studying the connection between shoulder [muscle](#) echogenicity and [diabetes](#) with an eye toward quantifying the phenomenon and seeing if it is reversible.

Provided by Radiological Society of North America

Citation: Shoulder 'brightness' on ultrasound may be a sign of diabetes (2018, November 19) retrieved 6 May 2024 from <https://medicalxpress.com/news/2018-11-shoulder-brightness-ultrasound-diabetes.html>

<p>This document is subject to copyright. Apart from any fair dealing for the purpose of private study or research, no part may be reproduced without the written permission. The content is provided for information purposes only.</p>
--