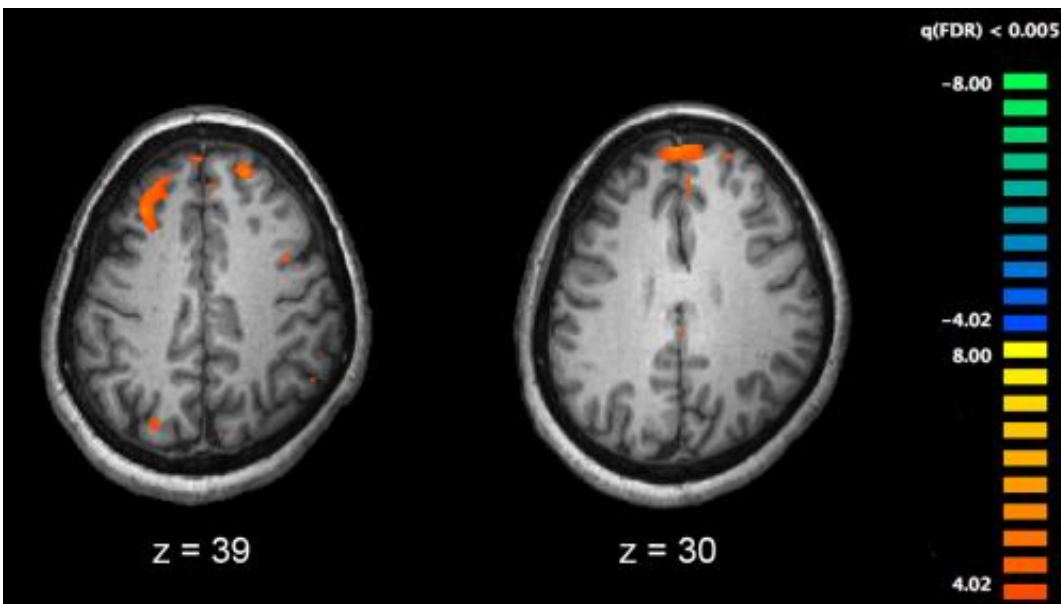


# Case study: Bartonella and sudden-onset adolescent schizophrenia

March 18 2019, by Tracey Peake



Functional magnetic resonance imaging (fMRI) and other brain imaging technologies allow for the study of differences in brain activity in people diagnosed with schizophrenia. The image shows two levels of the brain, with areas that were more active in healthy controls than in schizophrenia patients shown in orange, during an fMRI study of working memory. Credit: Kim J, Matthews NL, Park S./PLoS One.

In a new case study, researchers at North Carolina State University describe an adolescent human patient diagnosed with rapid onset schizophrenia who was found instead to have a *Bartonella henselae* infection. This study adds to the growing body of evidence that

*Bartonella* infection can mimic a host of chronic illnesses, including mental illness, and could open up new avenues of research into bacterial or microbial causes of mental disorders.

*Bartonella* is a bacteria most commonly associated with cat scratch disease, which until recently was thought to be a short-lived (or self-limiting) infection. There are at least 30 different known species of *Bartonella*, and 13 of those have been found to infect human beings. The ability to find and diagnose *Bartonella* infection in animals and humans—it is notorious for "hiding" in the linings of blood vessels—has led to its identification in patients with a host of chronic illnesses ranging from migraines to seizures to rheumatoid illnesses that the [medical community](#) previously hadn't been able to attribute to a specific cause.

In a [case study](#) published in the *Journal of Central Nervous System Disease*, an adolescent with sudden onset psychotic behavior—diagnosed as schizophrenia—was seen and treated by numerous specialists and therapists over an 18-month period. All conventional treatments for both psychosis and autoimmune disorders failed. Finally a physician recognized lesions on the patient's skin that are often associated with *Bartonella*, and the patient tested positive for the infection. Combination antimicrobial chemotherapy led to full recovery.

"This case is interesting for a number of reasons," says Dr. Ed Breitschwerdt, Melanie S. Steele Distinguished Professor of Internal Medicine at NC State and lead author of the case report. "Beyond suggesting that *Bartonella* infection itself could contribute to progressive neuropsychiatric disorders like schizophrenia, it raises the question of how often infection may be involved with psychiatric [disorders](#) generally.

"Researchers are starting to look at things like [infection](#)'s role in Alzheimer's [disease](#), for example. Beyond this one case, there's a lot of

movement in trying to understand the potential role of viral and bacterial infections in these medically complex diseases. This case gives us proof that there can be a connection, and offers an opportunity for future investigations."

**More information:** Edward B Breitschwerdt et al, *Bartonella henselae* Bloodstream Infection in a Boy With Pediatric Acute-Onset Neuropsychiatric Syndrome, *Journal of Central Nervous System Disease* (2019). [DOI: 10.1177/1179573519832014](https://doi.org/10.1177/1179573519832014)

Provided by North Carolina State University

Citation: Case study: *Bartonella* and sudden-onset adolescent schizophrenia (2019, March 18) retrieved 27 April 2024 from <https://medicalxpress.com/news/2019-03-case-bartonella-sudden-onset-adolescent-schizophrenia.html>

This document is subject to copyright. Apart from any fair dealing for the purpose of private study or research, no part may be reproduced without the written permission. The content is provided for information purposes only.