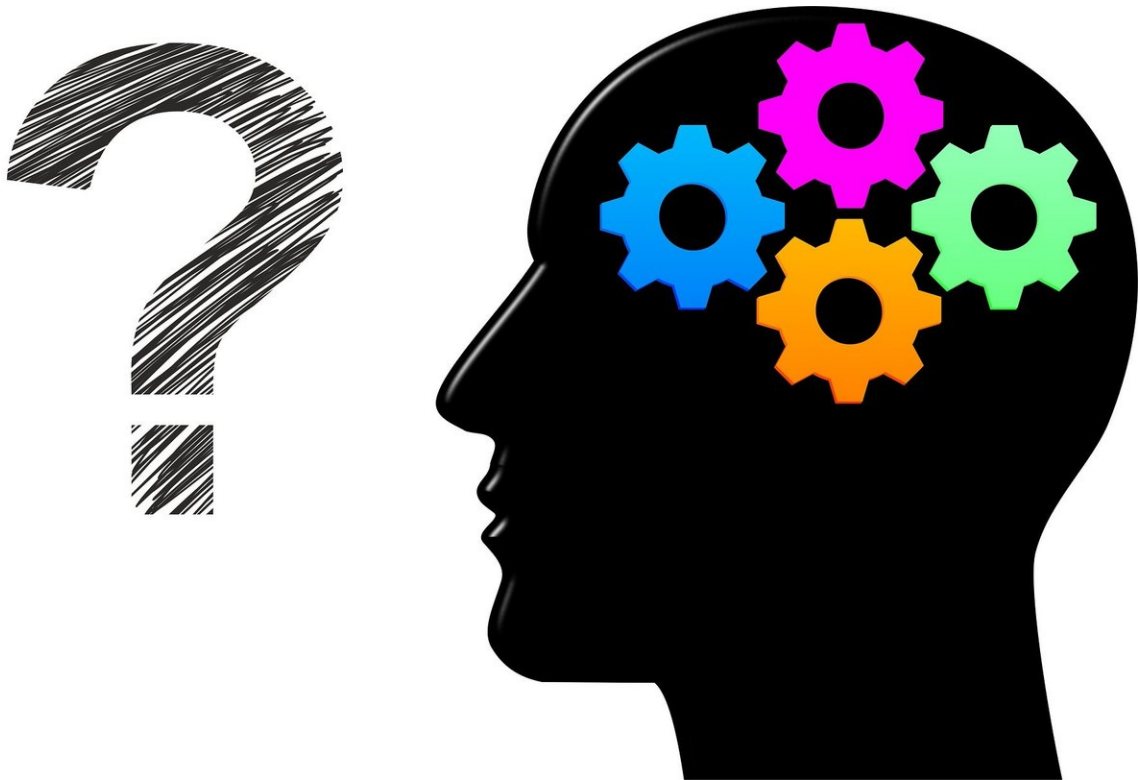


Exposure to trauma impacts ability to squash bad memories

March 4 2019



Credit: CC0 Public Domain

People exposed to trauma are less able to suppress unwanted emotional memories due to neural and behavioral disruptions in their brain that may contribute to the development of post-traumatic stress disorder (PTSD).

PTSD is characterized by intense reliving of the [trauma](#) that is repetitive, intrusive and incapacitating. The intrusive nature of these hallmark symptoms suggests that the inability to suppress unwanted memories may be a strong contributor to the behavioral manifestation of PTSD.

Previous work has shown that healthy individuals can actively suppress [emotional memories](#) while individuals with PTSD frequently experience unwanted memories of their traumatic experiences, even when making explicit efforts to avoid them. However, little is known regarding the behavioral and neural effects of memory suppression among individuals with PTSD.

Using [functional magnetic resonance](#) imaging, the researchers examined memory suppression in three groups: those with PTSD; those who experienced trauma without PTSD and controls with no trauma exposure or PTSD. They found trauma-exposed participants (regardless of PTSD status) were less likely to successfully suppress memory than non-trauma-exposed controls.

"Neuroimaging data revealed that trauma-exposed individuals showed reduced activation in the right middle frontal gyrus, a critical region for memory suppression, during a memory suppression task and were less likely to successfully suppress memory compared to non-trauma exposed individuals. These results suggest that trauma exposure is associated with neural and behavioral disruptions in memory suppression and point to the possibility that difficulty in active suppression of memories may be just one of several likely factors contributing to the development of PTSD," explained lead author Danielle R. Sullivan, Ph.D., affiliated with Boston University School of Medicine and the National Center for PTSD, VA Boston Healthcare System.

These findings appear in the *Journal of Psychiatric Research*.

More information: Danielle R. Sullivan et al, Behavioral and neural correlates of memory suppression in PTSD, *Journal of Psychiatric Research* (2019). [DOI: 10.1016/j.jpsychires.2019.02.015](https://doi.org/10.1016/j.jpsychires.2019.02.015)

Provided by Boston University School of Medicine

Citation: Exposure to trauma impacts ability to squash bad memories (2019, March 4) retrieved 25 April 2024 from <https://medicalxpress.com/news/2019-03-exposure-trauma-impacts-ability-bad.html>

<p>This document is subject to copyright. Apart from any fair dealing for the purpose of private study or research, no part may be reproduced without the written permission. The content is provided for information purposes only.</p>
--