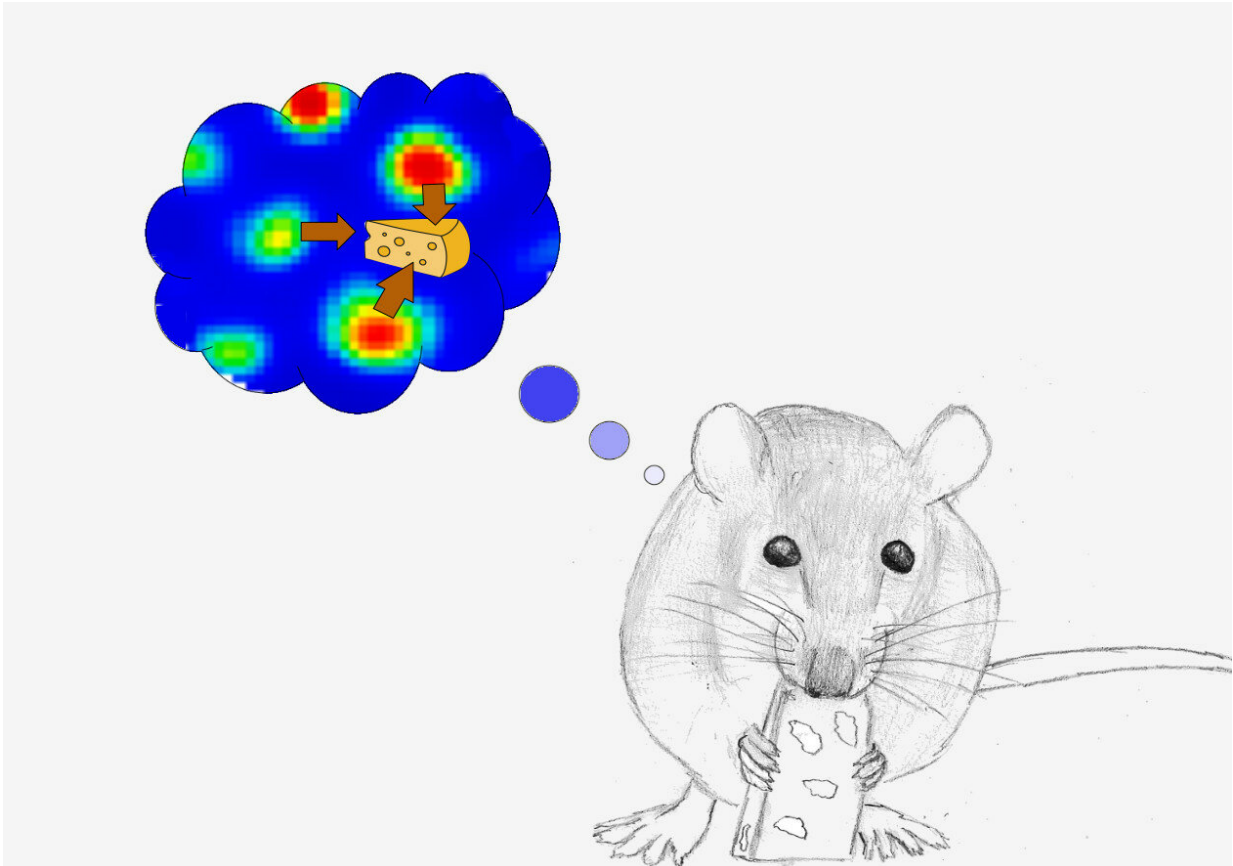


# Grid cells create 'treasure map' in rat brain

March 28 2019

---



Grid cell fields shift towards the location of a hidden food reward. No cheese was used in the actual experiments. Credit: Michele Nardin

Grid cells and place cells are specialized neurons that allow the brain to create a map of the outside world in which one navigates (Nobel Prize 2014). This brain GPS system is built on grid cells' strikingly regular

pattern of activity. This pattern provides the metric coordinates to "triangulate one's position" which is decoded by the place cells providing the "you are here" signal.

A team of scientists at the Institute of Science and Technology Austria (IST Austria) now shows that [grid](#) cells go beyond providing simple spatial coordinates. They also carry information related to goals, deforming their activity fields to provide rats with a "treasure map" of where to reach goals, like hidden rewards. This is the result of a new study by the research group of Jozsef Csicsvari, Professor at IST Austria, including co-first authors Charlotte Boccara, now at the University of Oslo, and Ph.D. student Michele Nardin, published today in the journal *Science*.

The hippocampus is a brain area essential for navigation. It contains neurons called [place cells](#). Place cells make a mental map of the environment, as each neuron is only active at specific locations. Knowing which place cell is active tells the brain where it is. Grid cells are another type of neuron essential for orientation. They are located in a different brain region, the entorhinal cortex. Since their discovery, grid cells have fascinated mathematicians and neuroscientists alike.

Contrary to place cells, which are active only in one location, grid cells are active in many locations. Yet these locations are far from random; on the contrary, their activity follows a strikingly regular hexagonal firing pattern, drawing a mosaic pattern of the whole environment. "Imagine a map of Vienna. Most tourists need to look at the coordinates to navigate and find this amazing Vietnamese restaurant near Karlsplatz in B5. Well, grid cells provide your brain with these coordinates. Every time you cross one of the grid's nodes, the grid cell activates. At least that's what we thought," explains first author Charlotte Boccara.

However, the question of whether this is all that grid cells do has been

debated for the past five years, says Boccara: "Researchers have observed that the firing pattern of grid cells is sometimes deformed. They have thus wondered whether grid cells may play a broader organisational role for any type of information, not just space."

## **Grid cell firing fields shift as rats learn where rewards are hidden**

In the current study, the researchers investigated whether the grid cell firing pattern changes when rats learn the location of hidden rewards. In this test of [goal](#)-driven behaviour, rats first learned the location of three hidden food pellets and then tried to find them again. By recording the activity of grid cells, the researchers could observe whether and how firing patterns change through goal learning. "We saw that the majority of grid cells respond to goal learning. Their firing pattern is deformed by the introduction of a goal," explains Boccara. Interestingly, the grid cell fields closest to the reward location move towards it the most, while fields further away shift less. "Our results mean that grid cells carry information related to goals, not only to space. They have more organizational power than previously thought."

As the researchers tested random goal locations on several consecutive days, they also got insights into how goal-directed learning and goal representation occurs. Boccara says, "As the rats learn about new locations, we see that the grid pattern shifts between the old pattern from the previous day and the new pattern. After learning, the new pattern is more present."

## **Persistent grid cell deformation gives hints about circuit dynamics**

At the same time, the researchers recorded activity from the

hippocampus, where place cells are located. The scientists observed that place cell firing also shifts towards the goal location. However, while the grid cells maintained the deformed pattern overnight, the place cells are "reset."

This is surprising, says Jozsef Csicsvari: "It is a paradox. The grid cells remember where the rewards were, but the place cells don't. This suggests that grid cells are important for behaviour."

Boccaro adds, "Our results have implications on our understanding of how circuits work and which brain region sets the tone. Is it the [entorhinal cortex](#) that dictates to the hippocampus how to shift the firing pattern? Our result would suggest that maybe [grid cells](#) tell place cells where relevant regions are, and then the place [cells](#) map these areas more finely."

**More information:** C.N. Boccaro et al., "The entorhinal cognitive map is attracted to goals," *Science* (2019). [science.sciencemag.org/cgi/doi ... 1126/science.aav4837](https://science.sciencemag.org/cgi/doi/10.1126/science.aav4837)

Provided by Institute of Science and Technology Austria

Citation: Grid cells create 'treasure map' in rat brain (2019, March 28) retrieved 26 April 2024 from <https://medicalxpress.com/news/2019-03-grid-cells-treasure-rat-brain.html>

This document is subject to copyright. Apart from any fair dealing for the purpose of private study or research, no part may be reproduced without the written permission. The content is provided for information purposes only.