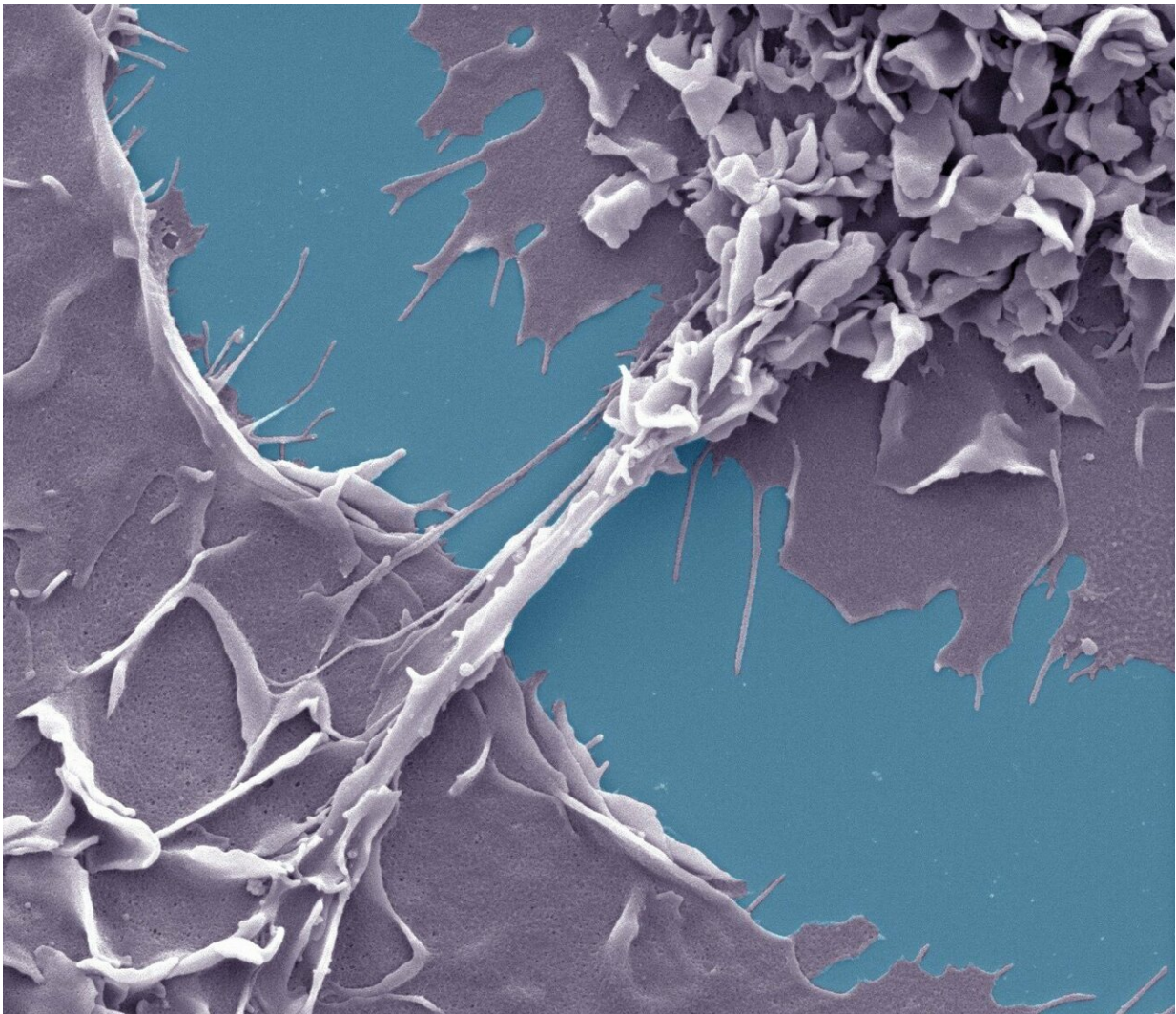


# HIV/tuberculosis co-infection: Tunneling towards better diagnosis

March 26 2019

---



Nanotubes linking two macrophages in humans infected with HIV-1 in a TB-associated micro-environment. Credit: Shanti Souriant & Renaud Poincloux, IPBS, CNRS/Université Toulouse III-Paul Sabatier

1.2 million people in the world are co-infected by HIV-1 and *Mycobacterium tuberculosis*. This combination is deadly: It makes patient diagnosis and treatment difficult, and increases the pathogenicity of these two infectious agents. An international team led by researchers at the CNRS and Inserm have revealed that in the presence of tuberculosis, HIV-1 moves from one cell to the next via nanotubes that form between macrophages, drastically increasing the percentage of infected cells. These findings appear in the 26 March 2019 edition of *Cell Reports*.

Researchers at the Institute of Pharmacology and Structural biology (CNRS/Université Toulouse III—Paul Sabatier) and the IM-TB/HIV international laboratory, a consortium between the CNRS and the National Scientific and Technical Research Council (Conicet) (Argentina), together with the Center for Pathophysiology of Toulouse Purpan (CNRS/INSERM/Université Toulouse III—Paul Sabatier), have shown that macrophages, which act as host cells for tuberculosis and HIV-1, join to form nanotubes when exposed to Interleukin-10, a molecule secreted in the presence of tuberculosis. The abundance of these specific M(IL-10) macrophages in the lungs is correlated with the severity of the disease. HIV-1 particles travel through these tunnel-like nanotubes to infect neighbouring [cells](#) and multiply. Using [different approaches](#) to inhibit their formation, scientists successfully reduced viral transfer between macrophages, leading to a drop in HIV-1 production.

In a case of severe TB, the development of nanotubes between macrophages accelerates, increasing the spread of the AIDS virus and viral production as a result. Because the presence of this specific type of macrophage can be measured, diagnosis and treatment of patients suffering from both illnesses could be made easier. This research paves

the way to new therapeutic approaches aimed at limiting viral load increases in tuberculosis patients.

**More information:** *Cell Reports* (2019). [DOI: 10.1016/j.celrep.2019.02.091](https://doi.org/10.1016/j.celrep.2019.02.091)

Provided by CNRS

Citation: HIV/tuberculosis co-infection: Tunneling towards better diagnosis (2019, March 26) retrieved 27 April 2024 from <https://medicalxpress.com/news/2019-03-hivtuberculosis-co-infection-tunneling-diagnosis.html>

This document is subject to copyright. Apart from any fair dealing for the purpose of private study or research, no part may be reproduced without the written permission. The content is provided for information purposes only.