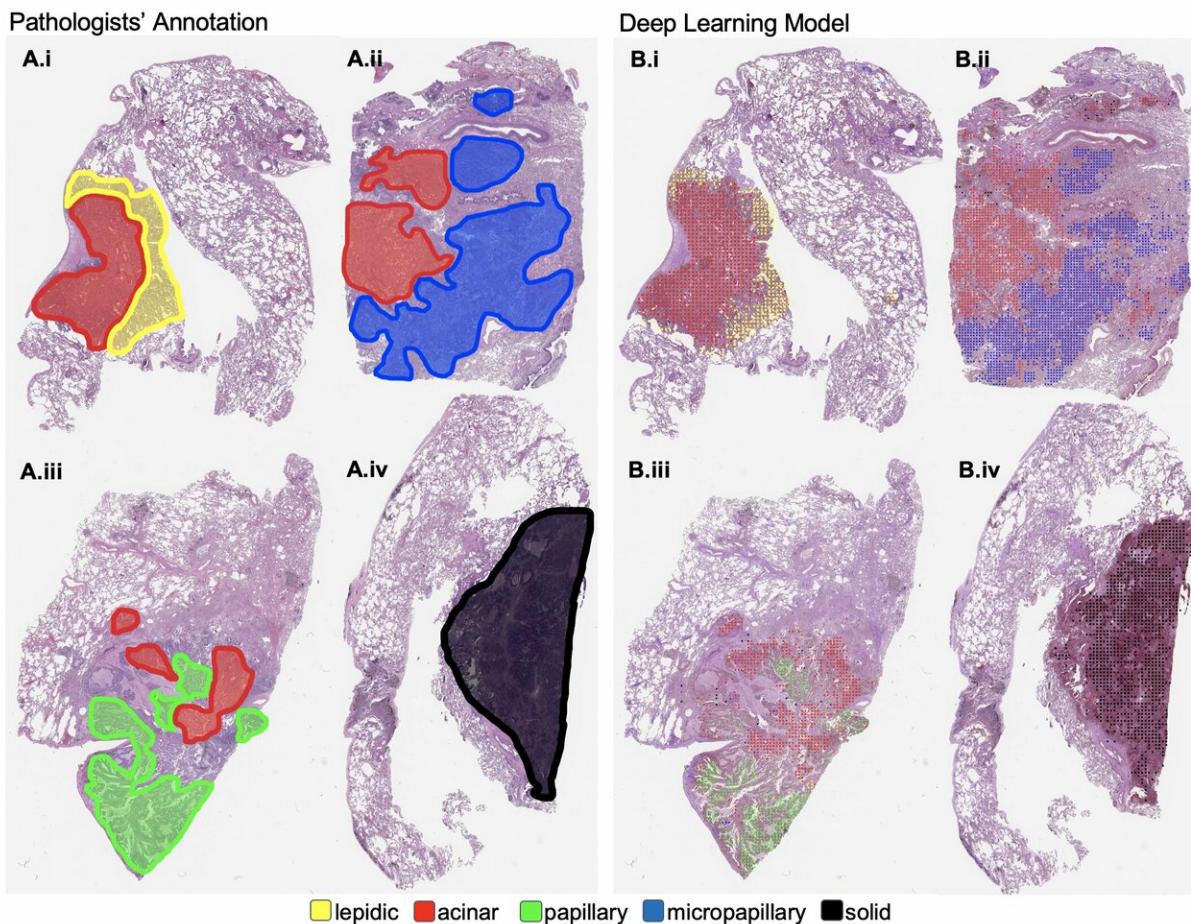


A new machine learning model can classify lung cancer slides at the pathologist level

March 4 2019



Visualization on sample whole-slide images of the lung cancer histologic patterns identified by pathologists compared to those detected by a new machine learning model developed by researchers at Dartmouth's Norris Cotton Cancer Center. The team rendered the image by overlaying color-coded dots on patches based on decisions generated by their computer model. A subjective qualitative assessment by pathologist annotators confirmed that the patterns detected on

each slide are on target. Credit: Hassanpour Lab, Dartmouth's Norris Cotton Cancer Center

Machine learning has improved dramatically in recent years and shown great promise in the field of medical image analysis. A team of research specialists at Dartmouth's Norris Cotton Cancer Center have utilized machine learning capabilities to assist with the challenging task of grading tumor patterns and subtypes of lung adenocarcinoma, the most common form of the leading cause of cancer-related deaths worldwide.

Currently, lung adenocarcinoma, requires pathologist's visual examination of lobectomy slides to determine the tumor patterns and subtypes. This classification has an important role in prognosis and determination of treatment for [lung cancer](#), however is a difficult and subjective task. Using recent advances in machine learning, the team, led by Saeed Hassanpour, Ph.D., developed a deep neural network to classify different types of lung adenocarcinoma on histopathology slides, and found that the model performed on par with three practicing pathologists.

"Our study demonstrates that machine learning can achieve high performance on a challenging image classification task and has the potential to be an asset to lung cancer management," says Hassanpour.

"Clinical implementation of our system would be able to assist pathologists for accurate classification of lung cancer subtypes, which is critical for prognosis and treatment."

The team's conclusions, "Pathologist-level classification of histologic patterns on resected lung adenocarcinoma slides with [deep neural networks](#)" are newly published in *Scientific Reports*. Recognizing that the approach is potentially applicable to other histopathology image analysis

tasks, Hassanpour's team made their code publicly available to promote new research and collaborations in this domain.

In addition to testing the deep learning model in a [clinical setting](#) to validate its ability to improve lung cancer classification, the team plans to apply the method to other challenging histopathology image analysis tasks in breast, esophageal, and colorectal cancer. "If validated through [clinical trials](#), our neural network model can potentially be implemented in [clinical practice](#) to assist pathologists," says Hassanpour. "Our [machine learning](#) method is also fast and can process a slide in less than one minute, so it could help triage patients before examination by physicians and potentially greatly assist pathologists in the visual examination of slides."

More information: *Scientific Reports* (2019). [DOI: 10.1038/s41598-019-40041-7](#)

Provided by Dartmouth-Hitchcock Medical Center

Citation: A new machine learning model can classify lung cancer slides at the pathologist level (2019, March 4) retrieved 19 April 2024 from <https://medicalxpress.com/news/2019-03-machine-lung-cancer-pathologist.html>

<p>This document is subject to copyright. Apart from any fair dealing for the purpose of private study or research, no part may be reproduced without the written permission. The content is provided for information purposes only.</p>
--