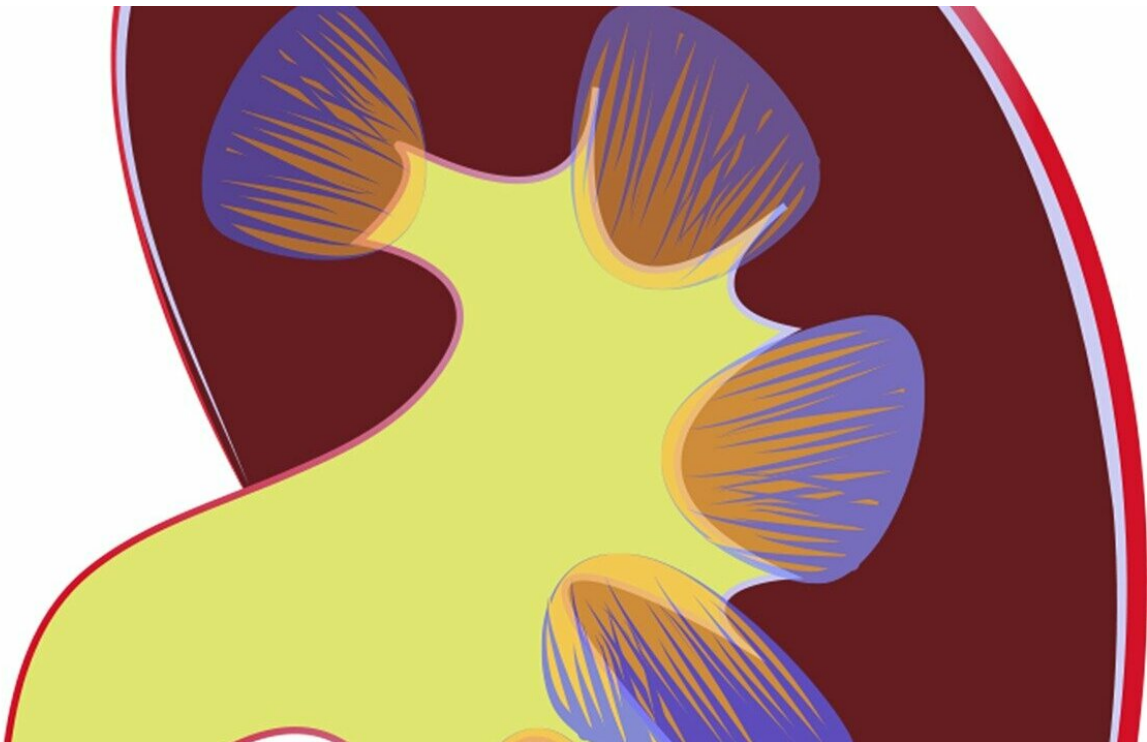


Poor kidney function linked to higher cancer risk

March 14 2019



Credit: CC0 Public Domain

A new study has uncovered a modestly higher cancer risk in individuals with mild to severe chronic kidney disease, driven primarily by skin (non-melanoma) and urogenital cancers. The findings, which appear in an upcoming issue of the *Clinical Journal of the American Society of Nephrology* (CJASN), do not prove a causal link between kidney

dysfunction and cancer but might be used to increase awareness among healthcare professional and patients, motivate lifestyle modifications if other cancer risk factors or family history are present, and justify more vigilant monitoring.

Kidney dysfunction leads to retention of metabolic waste products, which can have varying effects on diverse processes in the body. Some studies have indicated that kidney dysfunction may affect an individual's risk of developing [heart disease](#), anemia, [bone fractures](#), and possibly [cancer](#).

To look for a potential link between [kidney dysfunction](#) and cancer, Hong Xu, MD, Ph.D. (Karolinska Institutet, in Sweden) and her colleagues conducted a comprehensive analysis of the risk of cancer across the full spectrum of kidney function in a large representative population of Swedes aged 40 years and older with no priory history of cancer.

In the analysis of 719,033 adults who were followed for a median of 5 years, 64,319 cases of cancer (affecting 9% of participants) were detected throughout 3,338,226 person-years. (A person-year is the number of years of follow-up multiplied by the number of people in the analysis.) The relationship between kidney function and cancer incidence was U shaped. Compared with eGFR of 90-104 ml/min, lower eGFR strata associated with a higher cancer risk: an 8% higher risk for eGFR 30-59 ml/min and a 24% higher risk for eGFR less than 30 ml/min. After assessing biases, the researchers observed a sustained higher risk after 12 months follow-up for the incidence of skin (non-melanoma) and urogenital cancers.

"Establishing these associations do not prove causation, but evoke awareness and stimulate thinking on mechanisms, prevention, and screening opportunities," said Dr. Xu. "From a public health point of

view, these results may help health care policy makers to develop appropriate strategies for cancer screening and monitoring in the context of chronic kidney disease as well as help health service planning. From a research point of view, these results provide previously unknown associations—such as a higher skin cancer risk—and may stimulate further studies on the topic."

More information: Hong Xu et al, Estimated Glomerular Filtration Rate and the Risk of Cancer, *Clinical Journal of the American Society of Nephrology* (2019). [DOI: 10.2215/CJN.10820918](https://doi.org/10.2215/CJN.10820918)

Provided by American Society of Nephrology

Citation: Poor kidney function linked to higher cancer risk (2019, March 14) retrieved 11 May 2024 from <https://medicalxpress.com/news/2019-03-poor-kidney-function-linked-higher.html>

This document is subject to copyright. Apart from any fair dealing for the purpose of private study or research, no part may be reproduced without the written permission. The content is provided for information purposes only.