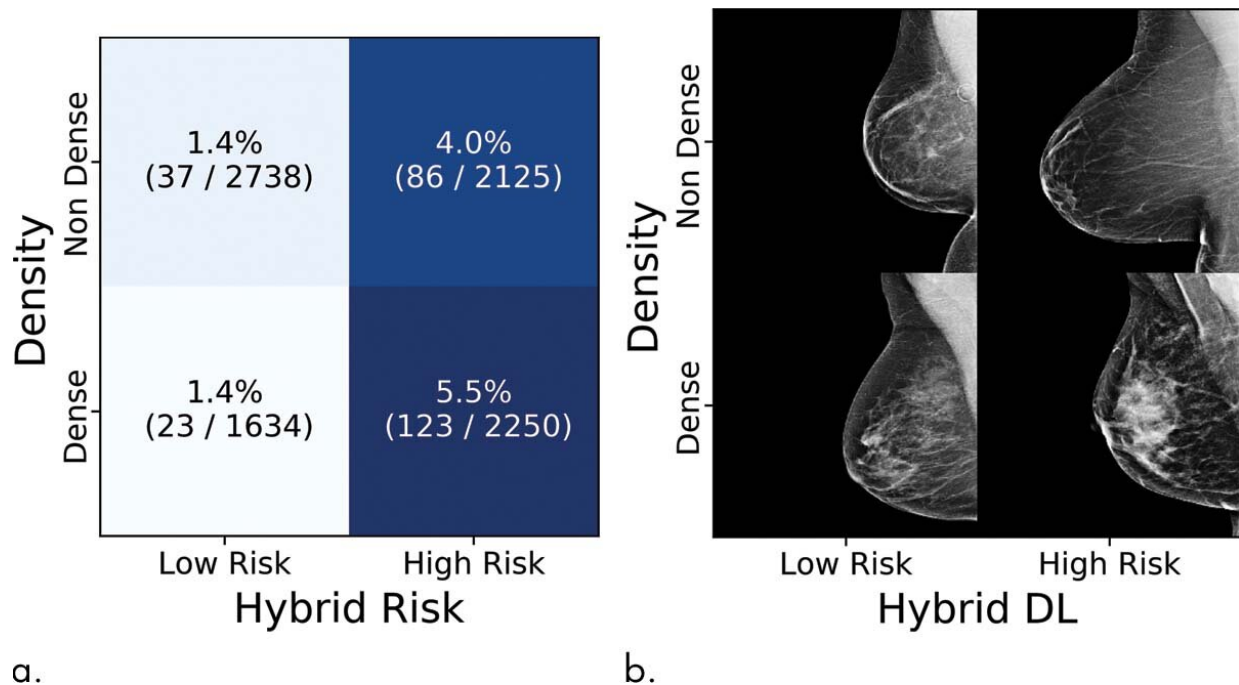


# Novel artificial intelligence method predicts future risk of breast cancer

May 7 2019



Cancer incidences partitioned by density value and hybrid deep learning (DL) risk assessment. (a) Each tile shows the percent and numerators/denominators of women with examinations within a specific density and risk group who developed cancer within 5 years. (b) Examples of screenings, sampled randomly from all examinations in that group. Credit: Radiological Society of North America

Researchers from two major institutions have developed a new tool with

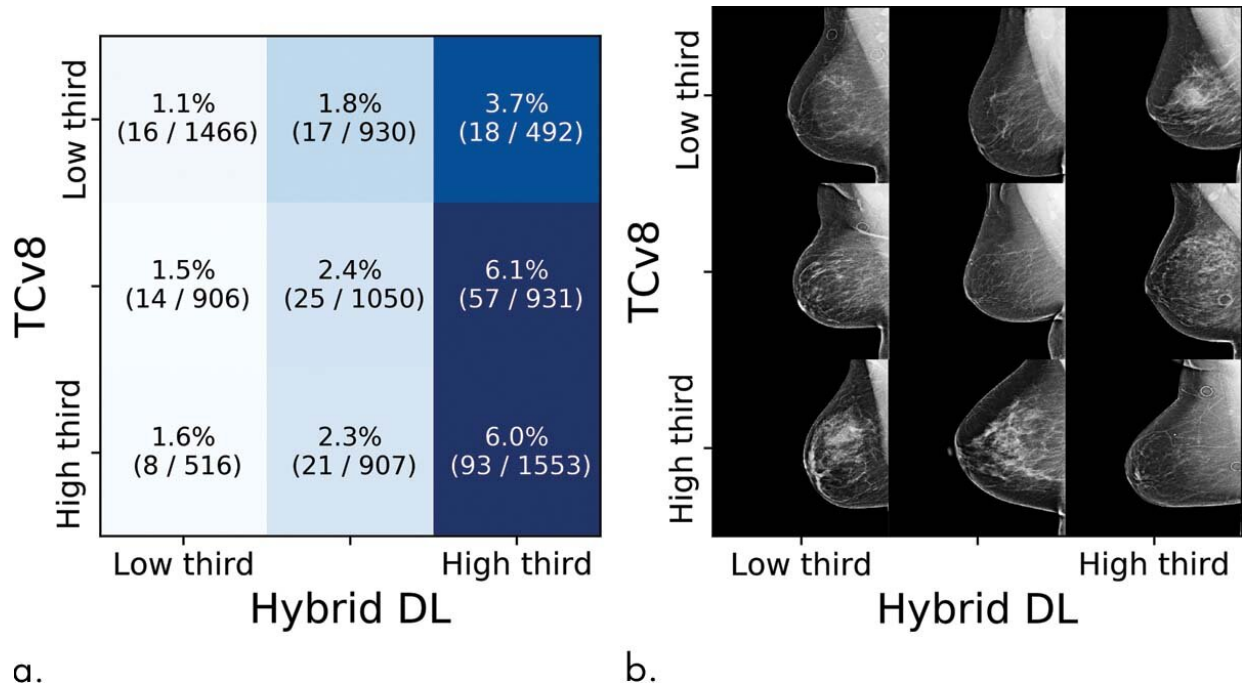
advanced artificial intelligence (AI) methods to predict a woman's future risk of breast cancer, according to a new study published in the journal *Radiology*.

Identifying [women](#) at risk for [breast cancer](#) is a critical component of effective early disease detection. However, available models that use factors such as [family history](#) and genetics fall far short in predicting an individual woman's likelihood of being diagnosed with the disease.

Breast density—the amount of dense tissue compared to the amount of fatty tissue in the breast on a mammogram—is an [independent risk factor](#) for breast [cancer](#) that has been added to some models to improve risk assessment. It is based on subjective assessment that can vary across radiologists, so [deep learning](#), a subset of AI in which computers learn by example, has been studied as a way to standardize and automate these measurements.

"There's much more information in a mammogram than just the four categories of breast density," said study lead author Adam Yala, Ph.D. candidate at the Massachusetts Institute of Technology (MIT) in Cambridge, Mass. "By using the deep learning model, we learn subtle cues that are indicative of future cancer."

Yala, in collaboration with Regina Barzilay, Ph.D., an AI expert and professor at MIT, and Constance Lehman, M.D., Ph.D., chief of breast imaging at Massachusetts General Hospital (MGH) in Boston and professor of radiology at Harvard Medical School, recently compared three different risk assessment approaches. The first model relied on traditional risk factors, the second on deep learning that used the mammogram alone, and the third on a hybrid approach that incorporated both the mammogram and traditional risk factors into the deep learning model.



Cancer incidences partitioned by Tyrer-Cuzick risk assessment model (TCv8) and hybrid deep learning (DL) risk assessment. (a) Each tile shows the percent and numerators/denominators of women with examinations within a specific risk range that developed cancer within 5 years. (b) Examples of screenings, sampled randomly from all examinations in that group. Credit: Radiological Society of North America

The researchers used almost 90,000 full-resolution screening mammograms from about 40,000 women to train, validate and test the deep learning model. They were able to obtain cancer outcomes through linkage to a regional tumor registry.

The deep learning models yielded substantially improved risk discrimination over the Tyrer-Cuzick model, a current clinical standard that uses breast density in factoring risk. When comparing the hybrid deep learning model against breast density, the researchers found that

patients with non-dense breasts and model-assessed high risk had 3.9 times the cancer incidence of patients with dense breasts and model-assessed low risk. The advantages held across different subgroups of women.

"Unlike traditional models, our [deep learning model](#) performs equally well across diverse races, ages and family histories," Dr. Barzilay said. "Until now, African-American women were at a distinct disadvantage in having accurate risk assessment of future breast cancer. Our AI model has changed that."

"There's a very large amount of information in a full-resolution mammogram that breast cancer risk models have not been able to use until recently," Yala added. "Using deep learning, we can learn to leverage that information directly from the data and create models that are significantly more accurate across diverse populations."

AI-assisted breast density measurements are already in use for screening [mammograms](#) performed at MGH. The researchers are tracking its performance in the clinic while working on refining the ways to communicate risk information to women and their primary care doctors.

"A missing element to support more effective, more personalized screening programs has been [risk assessment](#) tools that are easy to implement and that work across the full diversity of women whom we serve," Dr. Lehman said. "We are thrilled with our results and eager to work closely with our health care systems, our providers and, most importantly, our patients to incorporate this discovery into improved outcomes for all women."

**More information:** "A Deep Learning Mammography-based Model for Improved Breast Cancer Risk Prediction," *Radiology*, 2019.

Provided by Radiological Society of North America

Citation: Novel artificial intelligence method predicts future risk of breast cancer (2019, May 7)  
retrieved 27 April 2024 from

<https://medicalxpress.com/news/2019-05-artificial-intelligence-method-future-breast.html>

This document is subject to copyright. Apart from any fair dealing for the purpose of private study or research, no part may be reproduced without the written permission. The content is provided for information purposes only.