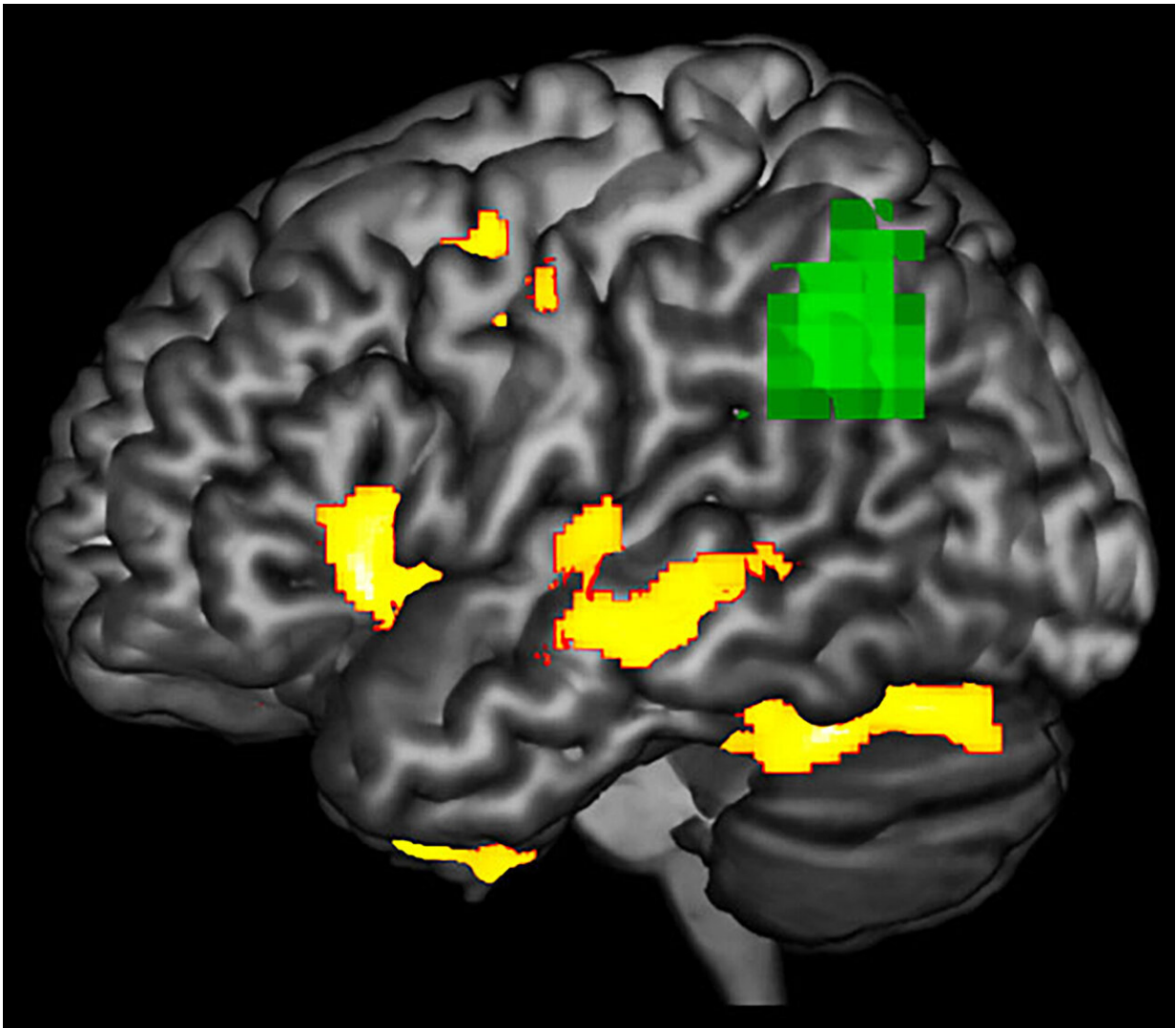


Detecting dementia's damaging effects before it's too late

May 13 2019



This image highlights areas in a PPA-affected brain during a language task where researchers observe functional abnormality (green) and structural degenerating (yellow). The green areas may be at-risk or dysfunctional, even if

the neurons are not dead yet. (Courtesy: Aneta Kielar) Credit: Aneta Kielar

Scientists might have found an early detection method for some forms of dementia, according to new research by the University of Arizona and the University of Toronto's Baycrest Health Sciences Centre.

According to the study published in the journal *Neuropsychologia* last month, patients with a rare neurodegenerative [brain](#) disorder called Primary Progressive Aphasia, or PPA, show abnormalities in [brain function](#) in areas that look structurally normal on an MRI scan.

"We wanted to study how degeneration affects function of the brain," said Aneta Kielar, the study's lead author and assistant professor in the UA Department of Speech, Language and Hearing Sciences.

But what she and her team discovered was that the brain showed functional defects in regions that were not yet showing structural damage on MRI.

Structural MRI provides 3-D visualization of brain structure, which is useful when studying patients with diseases that literally cause [brain cells](#) to wither away, like PPA.

Magnetoencephalography, or MEG, on the other hand, "gives you really good spatial precision as to where the brain response originates. We want to know if the decreased brain function is coming from the areas that are already atrophied or areas in an earlier stage of decline," said Jed Meltzer, the study's senior author and an assistant professor of psychology at the University of Toronto.

Kielar and her colleagues compared brain scans of patients with PPA to

healthy controls while both groups performed language tasks. The researchers also imaged participants' brains while at rest. The functional defects were related to worse performance in the tasks, as individuals with PPA lose their ability to speak or understand language while other aspects of cognition are typically preserved.

Identifying the discrepancy between a PPA brain's structural and functional integrity could be used as an early-detection method.

This is promising because "many drugs designed to treat dementia are proving to be not really affective and that might be because we're detecting the [brain damage](#) too late," Kiellar said. "Often, people don't come in for help until their neurons are already dead. We can do compensation therapies to delay disease progress, but once brain cells are dead, we can't get them back." This technique could allow patients to get ahead of the damage.

Kiellar acknowledged that this was a small study, which is partially because PPA is such a rare form of dementia, and that further investigation is needed.

Next, she hopes to uncover why this structural and functional mismatch is happening in PPA brains.

"It's interesting that the affected areas are so far from the neurodegeneration," Kiellar said. "One reason this might be happening is that those areas could be connected with white matter tracts," which facilitate communication between different brain regions. "When one area is dead, the area connected to it doesn't get normal input. It doesn't know what to do, so it starts to lose its function and atrophy because it doesn't get stimulation."

More information: Aneta Kiellar et al, Slowing is slowing: Delayed

neural responses to words are linked to abnormally slow resting state activity in primary progressive aphasia, *Neuropsychologia* (2019). [DOI: 10.1016/j.neuropsychologia.2019.04.007](https://doi.org/10.1016/j.neuropsychologia.2019.04.007)

Provided by University of Arizona

Citation: Detecting dementia's damaging effects before it's too late (2019, May 13) retrieved 25 April 2024 from <https://medicalxpress.com/news/2019-05-dementia-effects-late.html>

This document is subject to copyright. Apart from any fair dealing for the purpose of private study or research, no part may be reproduced without the written permission. The content is provided for information purposes only.