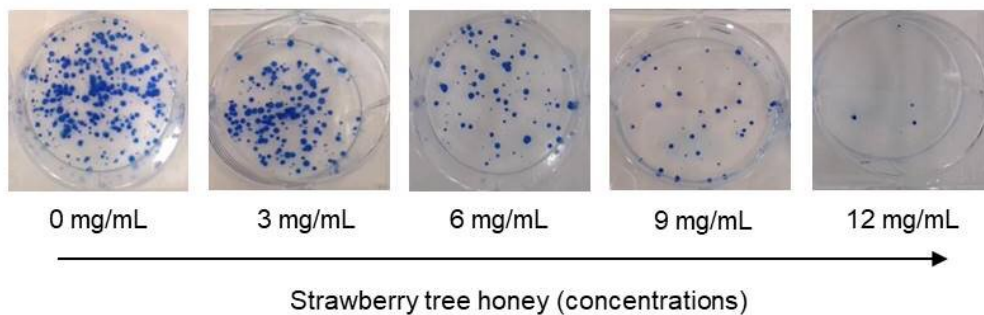


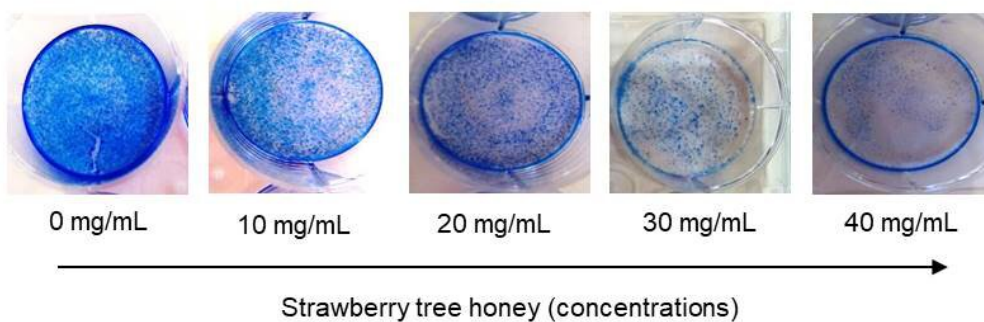
Strawberry tree honey inhibits cell proliferation in colon cancer lines

May 20 2019

A HCT-116 cells



B LoVo cells



Credit: *Journal of Functional Foods*

Spanish and Italian researchers have proven that when honey from

strawberry trees, a product typical of Mediterranean areas, is added to colon cancer cells grown in the laboratory, cell proliferation stops. The authors hope that these promising results and the anti-tumour potential of this food will be confirmed in in vivo models.

The [honey](#) extracted from the flowers of the strawberry tree (*Arbutus unedo*) is known for its organoleptic characteristics, especially for its strong bitter taste and dark colour. Now, scientists from the universities of Vigo and Granada (Spain) and from the Polytechnic University of Marche (Italy) have analysed the potential of this Mediterranean product to fight colon cancer.

The results, published in the *Journal of Functional Foods*, show that strawberry tree honey is capable of inhibiting the proliferation of tumour cells cultivated in laboratory plates—more specifically, those of a line of human colon adenocarcinoma (HCT-116) and another with metastatic characteristics (LoVo), widely used to investigate this type of tumour.

"Treatment with honey stops the tumour cell cycle by regulating some genes (cyclin D1, CDK2, p27Kip...); it inhibits [cell migration](#), reduces the ability to form colonies and induces apoptosis or programmed [cell death](#) through the modulation of other key genes (p53, caspase-3, c-PARP) and various apoptotic factors," says Maurizio Battino, coordinator of the research.

"It also suppresses the receptor of the epidermal growth factor called EGFR/HER2 and its signalling pathways, which could be an attractive target in cancer therapies because of their important role in the processes of cell survival and proliferation, as well as in those of apoptosis and metastasis."

The cytotoxicity and anti-tumour effects of strawberry tree honey in relation to colon cancer lines increased with the amount and time of

treatment. This led to other relevant results, such as the reduction of some transcription factors, the inhibition of the activity of certain enzymes and the decrease of mitochondrial respiration and glycolysis of tumour [cells](#).

"None of these effects was observed when honey was applied to healthy cell lines," the authors point out, noting the anticarcinogenic potential of this natural product, but insisting on the need for new studies with [colon cancer](#) in vivo models to confirm its chemopreventive effects.

"With these data it is not yet possible to speak of a cure or safe prevention of colorectal cancer thanks to strawberry tree honey," emphasizes Battino, who adds: "This work constitutes a starting point in the effort to evaluate its possible biological and anti-cancer effects and indicates the main molecular mechanisms through which it exerts its effect, reinforcing the interest in the study and production of this Mediterranean foodstuff."

"It is one more piece of evidence that a healthy, balanced and natural diet can provide [bioactive compounds](#) with possible interesting effects on the control and development of diseases as critical as this type of [cancer](#)," concludes the researcher.

More information: Sadia Afrin et al. Strawberry tree honey as a new potential functional food. Part 1: Strawberry tree honey reduces colon cancer cell proliferation and colony formation ability, inhibits cell cycle and promotes apoptosis by regulating EGFR and MAPKs signaling pathways, *Journal of Functional Foods* (2019). [DOI: 10.1016/j.jff.2019.04.035](#)

Sadia Afrin et al. Strawberry tree honey as a new potential functional food. Part 2: Strawberry tree honey increases ROS generation by suppressing Nrf2-ARE and NF-κB signaling pathways and decreases

metabolic phenotypes and metastatic activity in colon cancer cells,
Journal of Functional Foods (2019). [DOI: 10.1016/j.jff.2019.04.037](https://doi.org/10.1016/j.jff.2019.04.037)

Provided by Plataforma SINC

Citation: Strawberry tree honey inhibits cell proliferation in colon cancer lines (2019, May 20)
retrieved 23 April 2024 from
<https://medicalxpress.com/news/2019-05-strawberry-tree-honey-inhibits-cell.html>

This document is subject to copyright. Apart from any fair dealing for the purpose of private study or research, no part may be reproduced without the written permission. The content is provided for information purposes only.