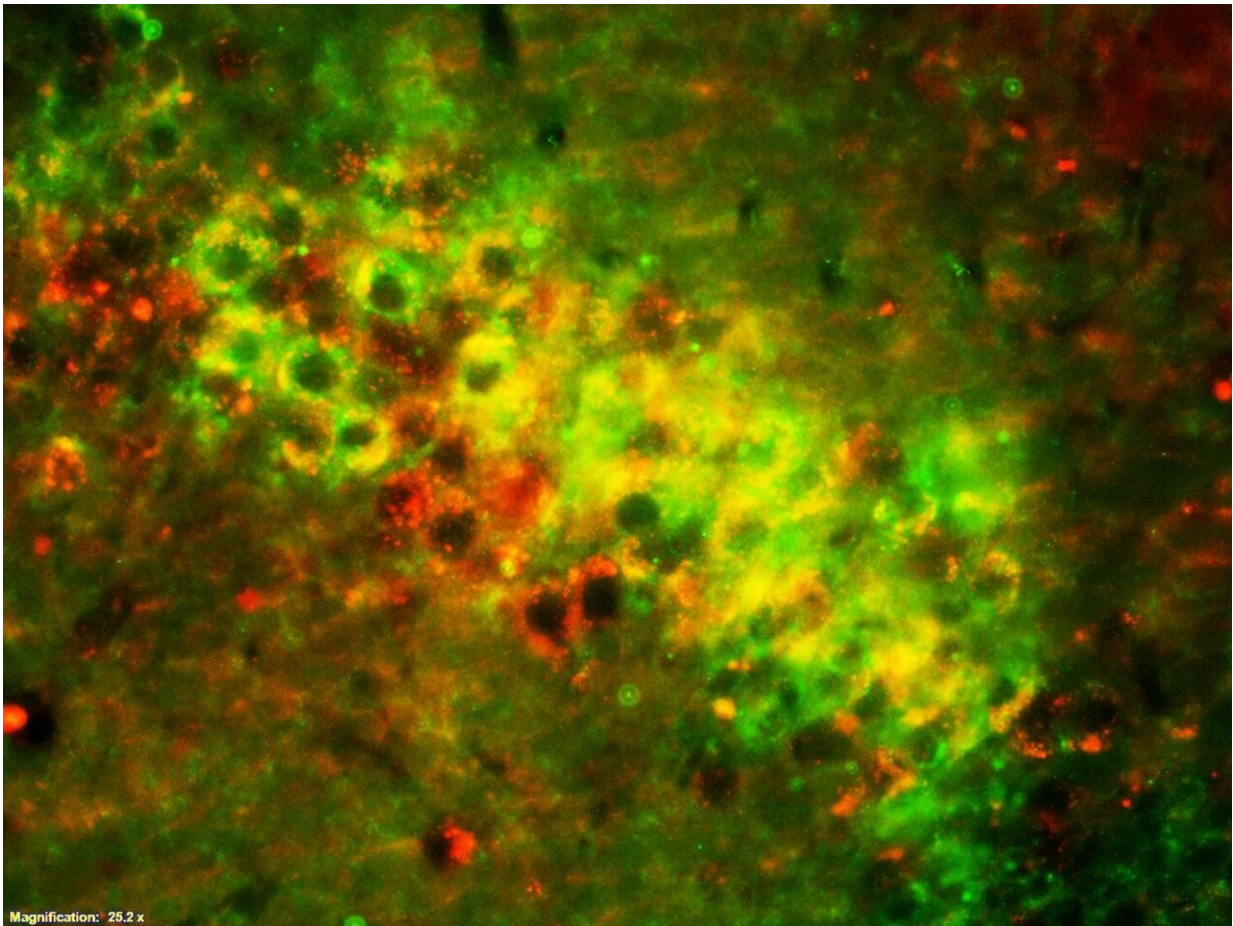


Researchers discover potential new therapeutic target for Alzheimer's disease

June 12 2019, by Anne Delotto Baie



Microscopic image shows the merging of APP and apoE in brain cells. This co-localization suggests an age-associated increase in apoE-N-terminal APP interaction and thus higher production of the toxic amyloid- β protein characteristic of Alzheimer's disease. Credit: University of South Florida

Apolipoprotein E (apoE) is a major genetic risk factor for the development of Alzheimer's disease, yet the protein tends to be understudied as a potential druggable target for the mind-robbing neurodegenerative disease.

Now a research team led by the University of South Florida Health (USF Health) Morsani College of Medicine reports that a novel apoE antagonist blocks apoE interaction with N-terminal [amyloid precursor protein](#) (APP). Moreover, this peptide antagonist, known as 6KApoEp, was shown to reduce Alzheimer's-associated beta amyloid (β -amyloid) accumulation and tau pathologies in the brain, as well as improving learning and memory in mice genetically engineered to mimic symptoms of Alzheimer's disease.

Many failed anti-amyloid therapies for Alzheimer's disease have been directed against various forms of the protein β -amyloid, which ultimately forms clumps of sticky plaques in the brain. The presence of these amyloid plaques is one of the major hallmarks of Alzheimer's disease.

The USF Health research findings suggests that disrupting apoE physical interaction with N-terminal APP may be a new disease-modifying therapeutic strategy for this most common type of dementia.

The [preclinical study](#) was published online May 2 in *Biological Psychiatry*.

"For the first time, we have direct evidence that the N-terminal section of apoE itself acts as an essential molecule (ligand) to promote the binding of apoE to the N-terminal region of APP outside the nerve cell," said the study's lead author Darrell Sawmiller, Ph.D., an assistant professor in the USF Health Department of Psychiatry & Behavioral Neurosciences. "This receptor-mediated mechanism plays a role in the

development of Alzheimer's disease. Overstimulation of APP by apoE may be an earlier, upstream event that signals other neurodegenerative processes contributing to the amyloid cascade."

"Initially we wanted to better understand how apoE pathologically interacts with APP, which leads to the formation of β -amyloid plaques and neuronal loss," said study senior author Jun Tan, Ph.D., MD, a professor in the USF Health Department of Psychiatry & Behavioral Neurosciences. "Our work further discovered an apoE derivative that can modulate structural and functional neuropathology in Alzheimer's [disease](#) mouse models."

More information: Darrell Sawmiller et al, A Novel Apolipoprotein E Antagonist Functionally Blocks Apolipoprotein E Interaction With N-terminal Amyloid Precursor Protein, Reduces β -Amyloid-Associated Pathology, and Improves Cognition, *Biological Psychiatry* (2019). [DOI: 10.1016/j.biopsych.2019.04.026](https://doi.org/10.1016/j.biopsych.2019.04.026)

Provided by University of South Florida

Citation: Researchers discover potential new therapeutic target for Alzheimer's disease (2019, June 12) retrieved 26 April 2024 from <https://medicalxpress.com/news/2019-06-potential-therapeutic-alzheimer-disease.html>

This document is subject to copyright. Apart from any fair dealing for the purpose of private study or research, no part may be reproduced without the written permission. The content is provided for information purposes only.