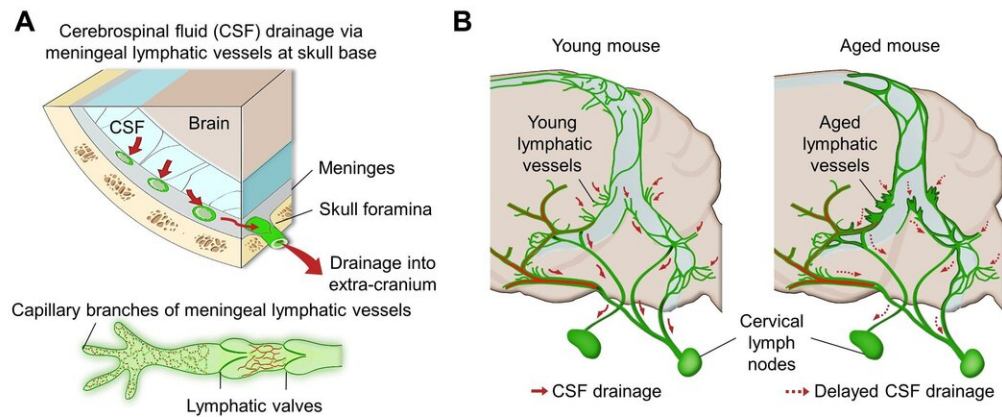


# Newly identified meningeal lymphatic vessels answers key questions about brain clearance

July 24 2019



[Figure 1] Schematic images of meningeal LVs and their changes associated with ageing

The waste of the brain is drained by the CSF and exits the brain through the mLVs at the skull base (basal mLVs). The basal mLVs are connected to the lymphatic system through a hole in the skull (skull foramen) and they have abundant lymphatic vessel branches with a finger-like protrusions. There exists a valve within the vessel structure of the basal meningeal lymphatic vessels that allows the lymph to flow in one direction. In particular, the basal meningeal lymphatic vessels are anatomically located in close proximity to the CSF and have structures favoring the absorption and drainage of the CSF. The CSF is cleared outside the central nervous system into the deep cervical lymph nodes after drainage from the basal meningeal lymphatic vessels. Figure B is a schematic diagram showing that the basal mLVs undergo a severe deformation

process and that their functionality is impaired with age. Credit: IBS

Just see what happens when your neighborhood's waste disposal system is out of service. Not only do the piles of trash stink but they can indeed hinder the area's normal functioning. That is also the case when the brain's waste management is on the blink. The buildup of toxic proteins in the brain causes massive damage to the nerves, leading to cognitive dysfunction and increased probability of developing neurodegenerative disorders such as Alzheimer's disease. Though the brain drains its waste via the cerebrospinal fluid (CSF), little has been understood about an accurate route for the brain's cleansing mechanism.

Scientists led by Dr. Gou Young Koh at the Center for Vascular Research within the Institute for Basic Science (IBS) at the Korea Advanced Institute of Science and Technology (KAIST), Daejeon, South Korea have reported the basal side of the skull as the major route, a so called "hotspot" for CSF drainage. They found that basal meningeal lymphatic vessels (mLVs) function as the main plumbing pipes for CSF. They confirmed macromolecules in the CSF mainly runs through the basal mLVs. Notably, the team also revealed that the brain's major drainage system, specifically basal mLVs are impaired with aging. Their findings have been reported in the journal *Nature* on July 24.

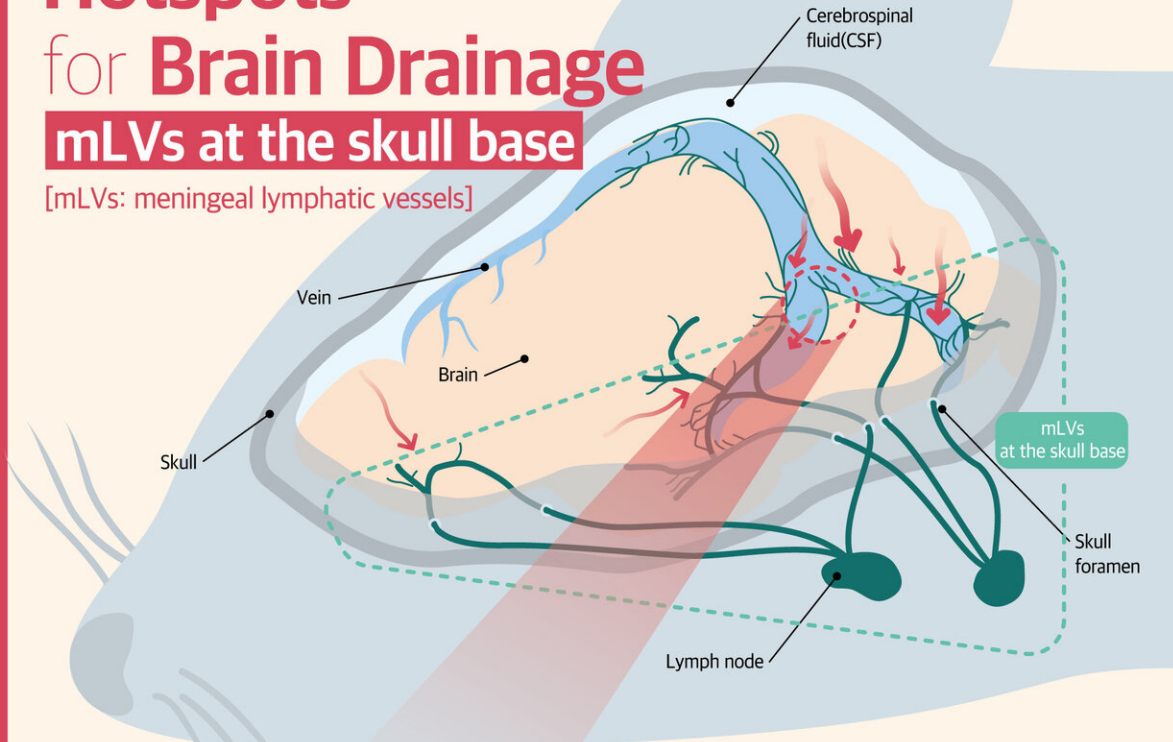
Throughout our body, excess fluids and waste products are removed from tissues via lymphatic vessels. It was only recently discovered that the brain also has a lymphatic drainage system. The mLVs are supposed to carry waste from the brain tissue fluid and the CSF down the deep cervical lymph nodes for disposal. Still scientist are left with one perplexing question—where is the main exit for the CSF? Though mLVs in the upper part of the skull (dorsal meningeal lymphatic vessels) were reported as the brain's clearance pathways in 2014, no substantial

drainage mechanism was observed in that section.

# Hotspots for Brain Drainage

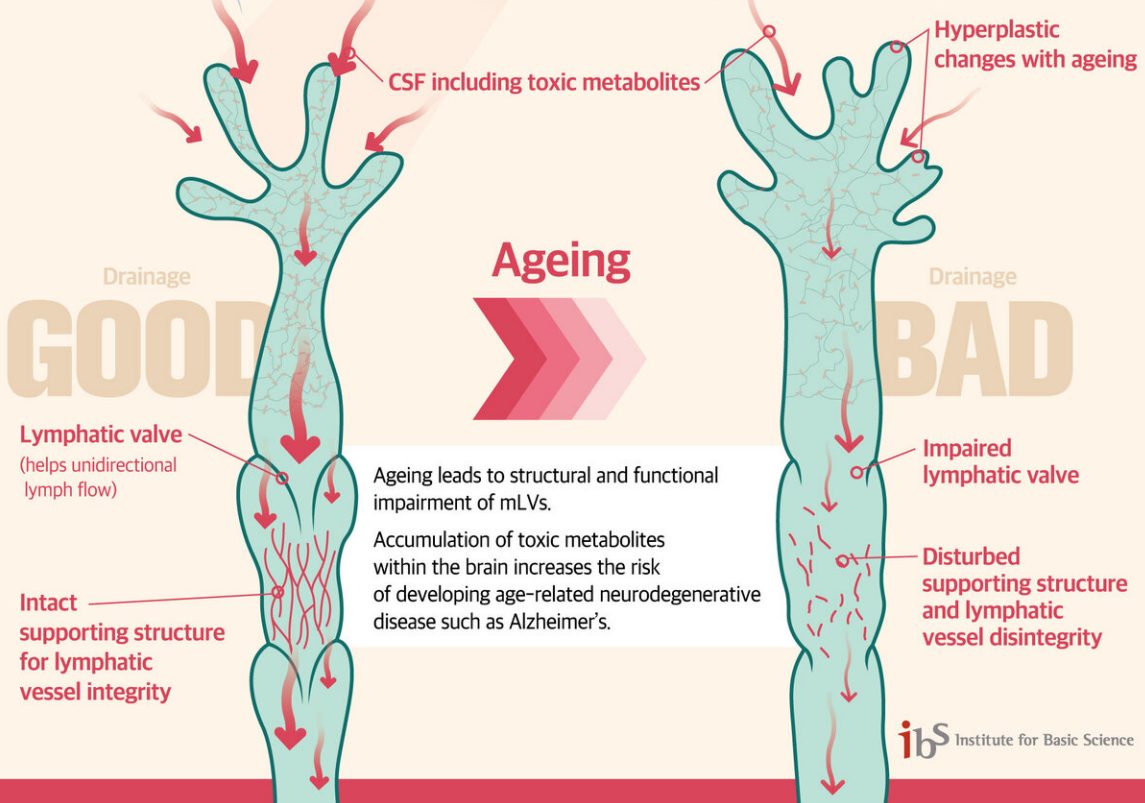
## mLVs at the skull base

[mLVs: meningeal lymphatic vessels]



### Young mLVs

### Aged mLVs



Hotspots for brain drainage: mLVs at the skull base. Credit: IBS

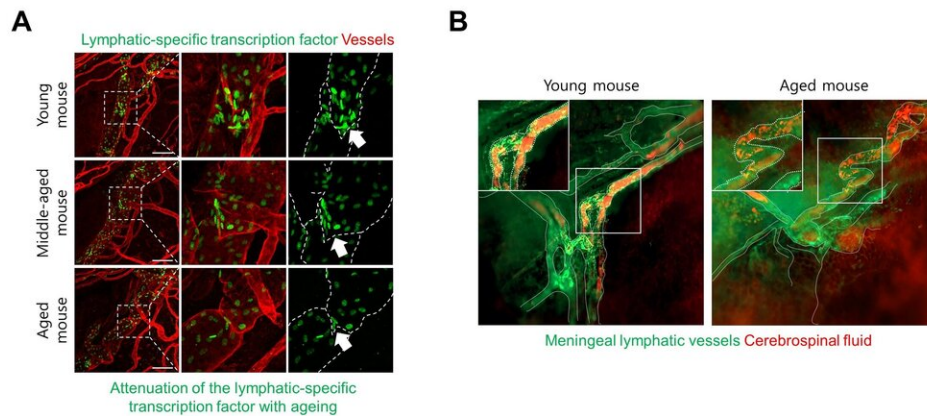
"As a hidden exit for CSF, we looked into the mLVs trapped within [complex structures](#) at the base of the skull," says Dr. Ji Hoon Ahn, the first author of this study. The researchers used several techniques to characterize the basal mLVs in detail. They used a genetically engineered lymphatic-reporter mouse model to visualize mLVs under a fluorescence microscope. By performing a careful examination of the mouse skull, they found distinctive features of basal mLVs that make them suitable for CSF uptake and drainage. Just like typical functional [lymphatic vessels](#), basal mLVs are found to have abundant lymphatic vessel branches with finger-like protrusions. Additionally, valves inside the basal mLVs allow the flow to go in one direction. In particular, they found that the basal mLVs are closely located to the CSF. Dr. Hyunsoo Cho, the first author of this study explains, "All up, it seemed a solid case that basal mLVs are the brain's main clearance pathways."

The researchers verified that such specialized morphologic characteristics of basal mLVs indeed facilitate the CSF uptake and drainage. Using CSF contrast-enhanced magnetic resonance imaging in a rat model, they found that CSF is drained preferentially through the basal mLVs. They also utilized a lymphatic-reporter mouse model and discovered that a fluorescence-tagged tracer injected into the brain itself or the CSF is cleared mainly through the basal mLVs. Jun-Hee Kim, the first author of this study notes, "We literally saw the brain clearance mechanism utilizing basal outflow route to exit the skull."

It has long been suggested that CSF turnover and drainage declines with ageing. However, alteration of mLVs associated with ageing is poorly

understood. In this study, the researchers observed changes of mLVs in young (3-month-old) and aged (24~27-months-old) mice. They found that the structure of the basal mLVs and their lymphatic valves in aged mice become severely flawed, thus hampering CSF clearance. The corresponding author of this study, Dr. Koh says, "By characterizing the precise route for fluids leaving the brain, this study improves our understanding on how waste is cleared from the brain. Our findings also provide further insights into the role of impaired CSF clearance in the development of age-related neurodegenerative diseases."

Many current therapies for Alzheimer's disease target abnormally accumulated proteins, such as beta-amyloid. By mapping out a precise route for the brain's waste clearance system, this study may be able to help find ways to improve the brain's cleansing function. Such breakthroughs may lead to a strategy for eliminating the buildup of aging-related toxic proteins. "It definitely warrants more extensive investigation of mLVs in patients with age-related neurodegenerative disease such as Alzheimer's disease prior to clinical investigation," adds Dr. Koh.



[Figure 3] Dysfunctional changes of meningeal lymphatic vessels at skull base with ageing

Figure A shows the changes of the lymphatic valves within the mLVs in young, middle-aged, and aged mice. The structure of the mLVs and lymphatic valves within the vessel structure become severely flawed (white arrows), and the expression of the lymphatic-specific transcription factor (green) decreases with age, suggesting that their functionality is impaired in aged mice compared with young mice. Figure B shows the structure of the mLVs (green) and the draining CSF (red) through the mLVs in young and aged mice after injection of fluorescence-labeled dye into the CSF space. Compared to young mice, the mLVs in the aged mice exhibit a tortuous shape, and less cerebrospinal fluid is observed within the vessel (white boxes are magnified in the upper left corner of each panel), suggesting less functionality of aged basal mLVs compared with those of young mice. Credit: IBS

**More information:** Meningeal lymphatic vessels at the skull base drain cerebrospinal fluid , *Nature* (2019). [DOI: 10.1038/s41586-019-1419-5](https://doi.org/10.1038/s41586-019-1419-5)

Provided by Institute for Basic Science

Citation: Newly identified meningeal lymphatic vessels answers key questions about brain clearance (2019, July 24) retrieved 4 May 2024 from <https://medicalxpress.com/news/2019-07-newly-meningeal-lymphatic-vessels-key.html>

This document is subject to copyright. Apart from any fair dealing for the purpose of private study or research, no part may be reproduced without the written permission. The content is provided for information purposes only.