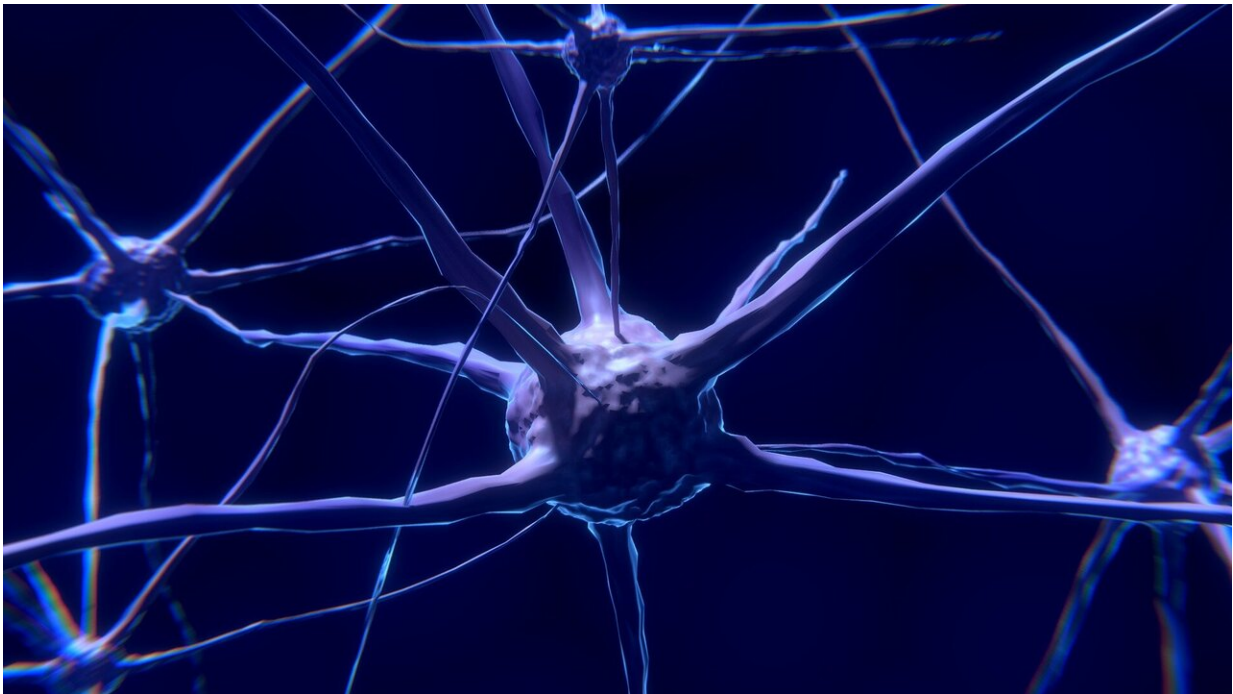


Radiotherapy targets tumors precisely with less damage to healthy cells

July 26 2019



Credit: CC0 Public Domain

A new way of concentrating radiotherapy dose in tumors, while minimizing damage to healthy cells, has been proposed in research led by scientists at the University of Strathclyde.

The study proposes that focusing high-energy particle beams on a small spot deep inside the body could potentially enable clinicians to target

cancerous tumors precisely, while reducing the dose to surrounding tissue.

External beam [radiotherapy](#) involves treating patients with either high energy X-rays or particle beams. tumor cells are killed by the radiation, which is usually administered in multiple fractions, which are applied daily over several weeks. The main goal is to kill tumor cells using beams of radiation while minimizing damage to [healthy cells](#). The study has been published in *Scientific Reports*.

Professor Dino Jaroszynski, who leads the project, said: "Around half of the population will suffer from cancer at some time in their lives. Of these people, half will be treated using radiotherapy or a combination of radiotherapy and chemotherapy.

"One of the challenges in radiotherapy is to deposit a high radiation dose in a way that the dose fully 'conforms' to the tumor, to ensure that all cancerous cells are killed, while preventing damage to healthy cells. Our study shows that we can very simply focus radiation onto a tumor to irradiate it while reducing the dose in surrounding healthy tissue.

"In a similar way to a magnifying glass focusing the sun's rays to a small spot, we propose to focus a particle beam to a small spot using a magnetic lens to ablate the tumor."

Common forms of radiation currently used in radiotherapy include X-rays produced by electron beams from 'medical' linear accelerators, or linacs, that generate a type of radiation known as bremsstrahlung X-rays, which then target the tumor.

These relatively low energy electron beams from the linac can also be used directly to irradiate tumors but they do not penetrate deeply into the body and therefore are not commonly used.

One of the disadvantages of using X-rays in radiotherapy is that they are absorbed in the body and their effects diminish, resulting in a high entrance dose. Proximal and distal doses—before and after the tumor—can also be as high as, or higher than, the radiation dose in the tumor.

To irradiate the tumor precisely with sufficient radiation to kill all tumor cells, the X-ray beam is often rotated while pointing at the tumor from different directions, while the patient remains stationary.

An effective radiotherapy modality uses heavier particles such as protons and ions. These have the advantage of [radiation](#) doses that can be confined to a small region called the "Bragg peak." Proton radiotherapy facilities are available but are very expensive.

Dr. Enrico Brunetti, a Research Fellow in Strathclyde's Department of Physics involved in the project, said: "This work presents a comprehensive numerical study of fundamental issues encountered in cancer treatment with very high energy electrons for a wide range of geometries. Results suggest that technology and beam transport systems routinely employed in high-energy particle accelerators could find direct application in this field, expanding the range of tools available for radiotherapy."

Karolina Kokurewicz, a Strathclyde Ph.D. student working on the project, said: "Electrons, much like protons, have properties specific to particles. The significantly smaller electron mass, however, must be compensated for by increasing their energy and therefore inertia to achieve an effect similar to high mass particles. We push the envelope to fully investigate the potential advantages of very high energy electrons (VHEEs) in radiotherapy.

"In our studies, we show that a VHEE beam, when focused, can be easily

controlled to target precisely tumors similar to [beam](#) scanning modalities. The net effect is a greatly enhanced dose profile that conforms closely to the target volumes and potentially provides better tumor control. It is a first step to realize the real potential of VHEEs."

Professor Jaroszynski said: "We are setting up a new medical beamline at the Scottish Centre for the Application of Plasma-based Accelerator (SCAPA) at Strathclyde, to use laser-produced high energy electron accelerators to investigate the ideas published in our paper.

"These ultra-compact laser-wakefield accelerators are only millimetres long and can be easily focused; most of the space is taken up by the power supply, which is the laser. This is a very exciting new project that has potential to eventually transform radiotherapy by reducing its cost, while improving its effectiveness."

More information: K. Kokurewicz et al. Focused very high-energy electron beams as a novel radiotherapy modality for producing high-dose volumetric elements, *Scientific Reports* (2019). [DOI: 10.1038/s41598-019-46630-w](#)

Provided by University of Strathclyde, Glasgow

Citation: Radiotherapy targets tumors precisely with less damage to healthy cells (2019, July 26) retrieved 25 April 2024 from <https://medicalxpress.com/news/2019-07-radiotherapy-tumors-precisely-healthy-cells.html>

<p>This document is subject to copyright. Apart from any fair dealing for the purpose of private study or research, no part may be reproduced without the written permission. The content is provided for information purposes only.</p>
--