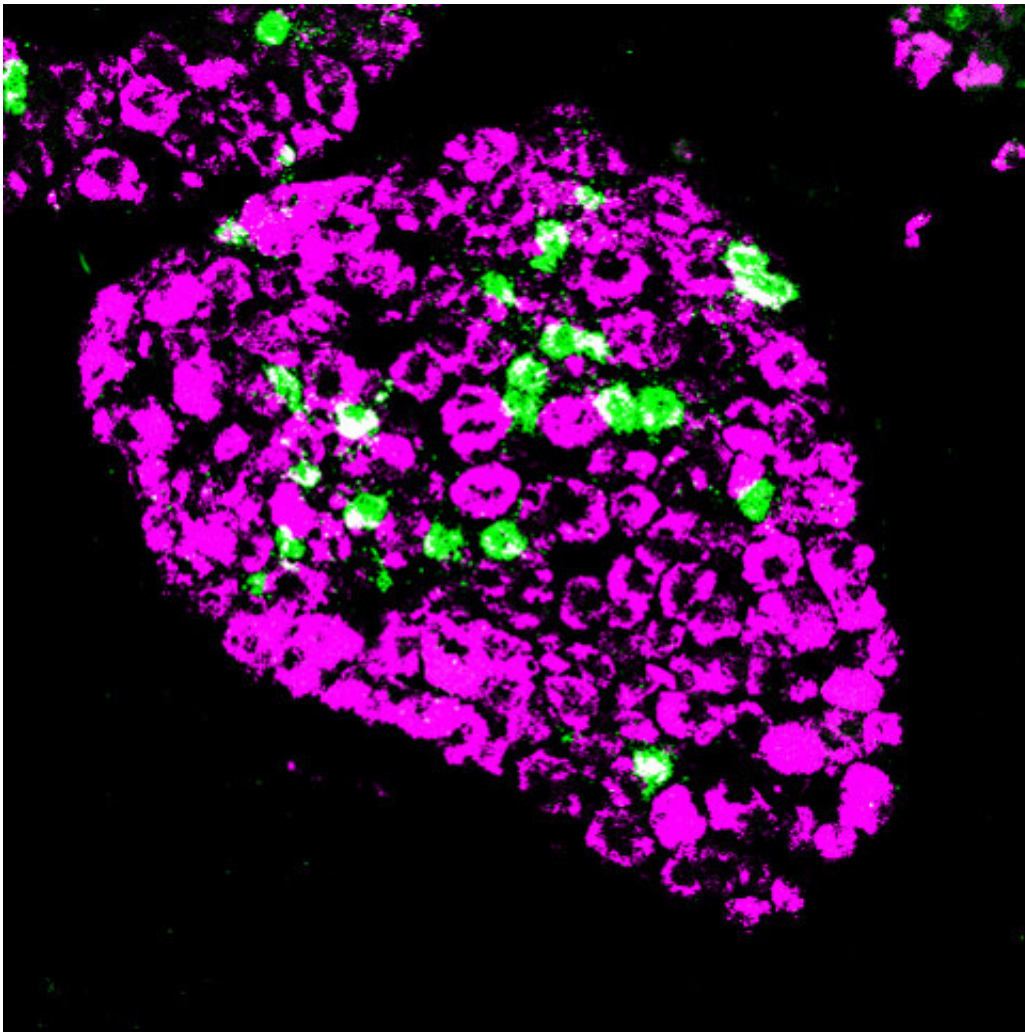


An itch to scratch: Scientists identify potential approach to chronic problem

July 12 2019



Nerves that stimulate skin are grouped in structures next to the spinal cord. Here, nerves in such a structure -- called a dorsal root ganglion -- that are involved in detecting an itch are labeled green. Nerves involved in sensing pain, temperature and other stimuli are shown in magenta. Credit: Hans Juergen Solinski, National Institute of Dental and Craniofacial Research

Chronic itch goes beyond being just a simple annoyance; it can greatly affect a person's quality of life. While scientists have some clues to its causes, effective therapies have been elusive.

Now, using a technique called quantitative high-throughput screening to sort through more than 86,000 [compounds](#) at the same time, researchers at NCATS and the National Institute of Dental and Craniofacial Research (NIDCR) report a new strategy that may eventually help alleviate [chronic itch](#). They've shown that blocking a receptor, or docking station, found on the surface of both mouse and human spinal cord neurons could be key.

Several years ago, Mark Hoon, Ph.D., and his colleagues at NIDCR found a receptor, Npr1, on mouse spinal cord neurons for a protein associated with itch. The protein fit into Npr1 like a key into a lock, helping turn on the itch sensation. Npr1 appeared to be a potential target for drugs to halt itch.

Hoon contacted NCATS scientist James Inglese, Ph.D., and his team for help in identifying compounds that could block Npr1 activity. The researchers developed a series of assays, or tests, and used robots to screen compounds in [human cells](#), finding approximately 1,400 molecules worth examining more closely. They then developed additional assays to narrow the list to 15 compounds. They showed a subset of these compounds could halt both human and mouse versions of the receptor from working. A follow-up study in mice showed that blocking the receptor reduced scratching.

Next, the scientists will examine more candidate compounds and determine how they block Npr1. They hope the findings will help them choose which compounds to study further and chemically modify as

potential anti-itch drugs. Hoon, Inglese and their colleagues reported the results online July 10 in *Science Translational Medicine*.

"This is a proof-of-concept study and an important application of what NCATS does," Inglese said. "We wanted to show that by pharmacologically blocking the target receptor, the approach could be successful in finding a drug to treat chronic itch. Because it can take a long time to develop an ideal compound, the rationale behind the approach needs to be well vetted."

More information: Hans Jürgen Solinski et al. Inhibition of natriuretic peptide receptor 1 reduces itch in mice, *Science Translational Medicine* (2019). [DOI: 10.1126/scitranslmed.aav5464](https://doi.org/10.1126/scitranslmed.aav5464)

Provided by National Institutes of Health

Citation: An itch to scratch: Scientists identify potential approach to chronic problem (2019, July 12) retrieved 5 May 2024 from <https://medicalxpress.com/news/2019-07-scientists-potential-approach-chronic-problem.html>

<p>This document is subject to copyright. Apart from any fair dealing for the purpose of private study or research, no part may be reproduced without the written permission. The content is provided for information purposes only.</p>
--