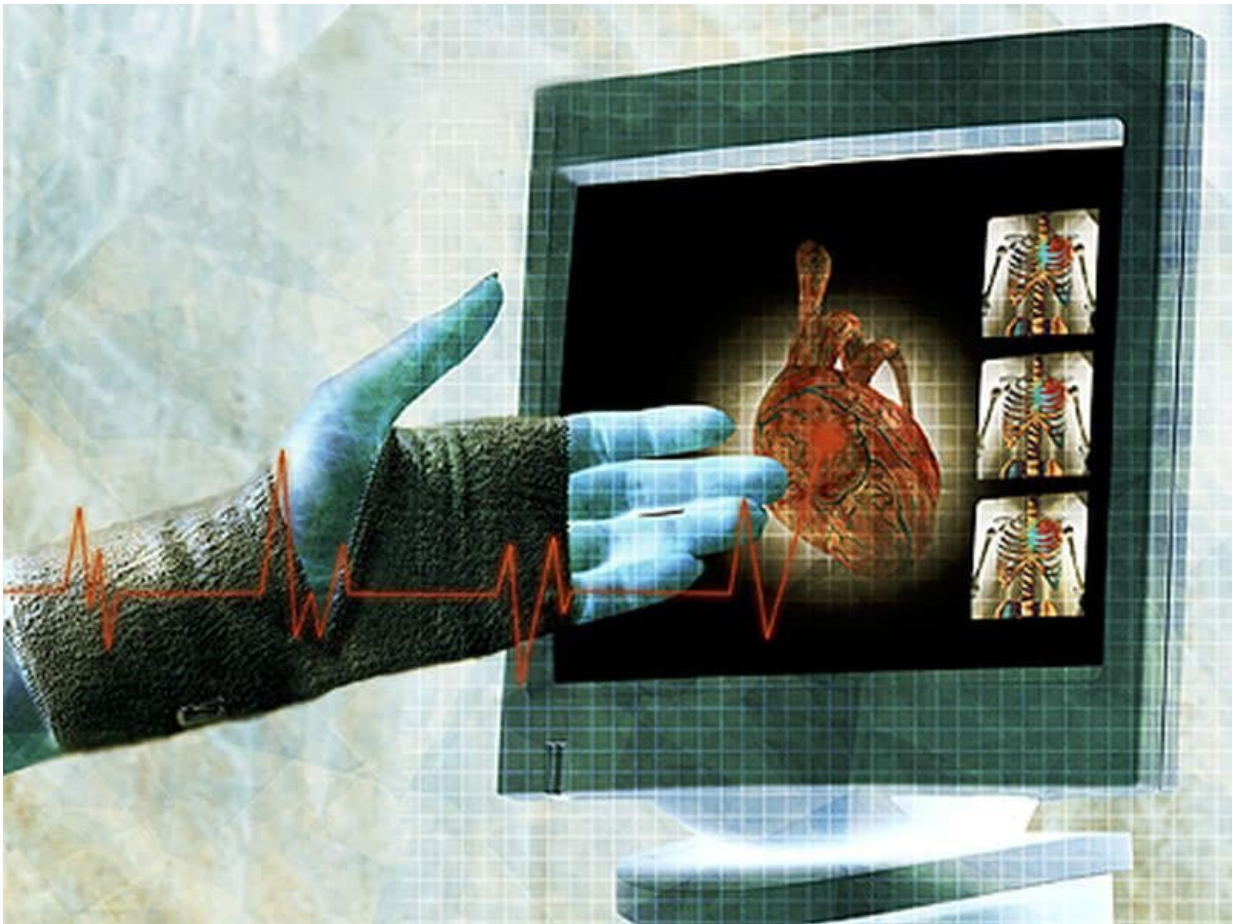


# Low specificity limits use of focused cardiac ultrasonography

August 6 2019

---



(HealthDay)—Incorporating focused cardiac ultrasonography (FoCUS)

into clinical examination has greater sensitivity, but not greater specificity, than clinical assessment alone for identifying left ventricular dysfunction and aortic or mitral valve disease, according to a review published Aug. 6 in the *Annals of Internal Medicine*.

Jeffrey A. Marbach, M.B.B.S., from University of Ottawa in Ontario, Canada, and colleagues conducted a systematic literature review to identify studies evaluating the accuracy of FoCUS-assisted clinical assessment versus clinical assessment alone for diagnosing left ventricular dysfunction or valvular disease in adults undergoing cardiovascular assessment.

Based on the nine identified studies, the sensitivity of clinical assessment for diagnosing left ventricular dysfunction (left ventricular ejection fraction

Citation: Low specificity limits use of focused cardiac ultrasonography (2019, August 6) retrieved 2 May 2024 from

<https://medicalxpress.com/news/2019-08-specificity-limits-focused-cardiac-ultrasonography.html>

<p>This document is subject to copyright. Apart from any fair dealing for the purpose of private study or research, no part may be reproduced without the written permission. The content is provided for information purposes only.</p>
--