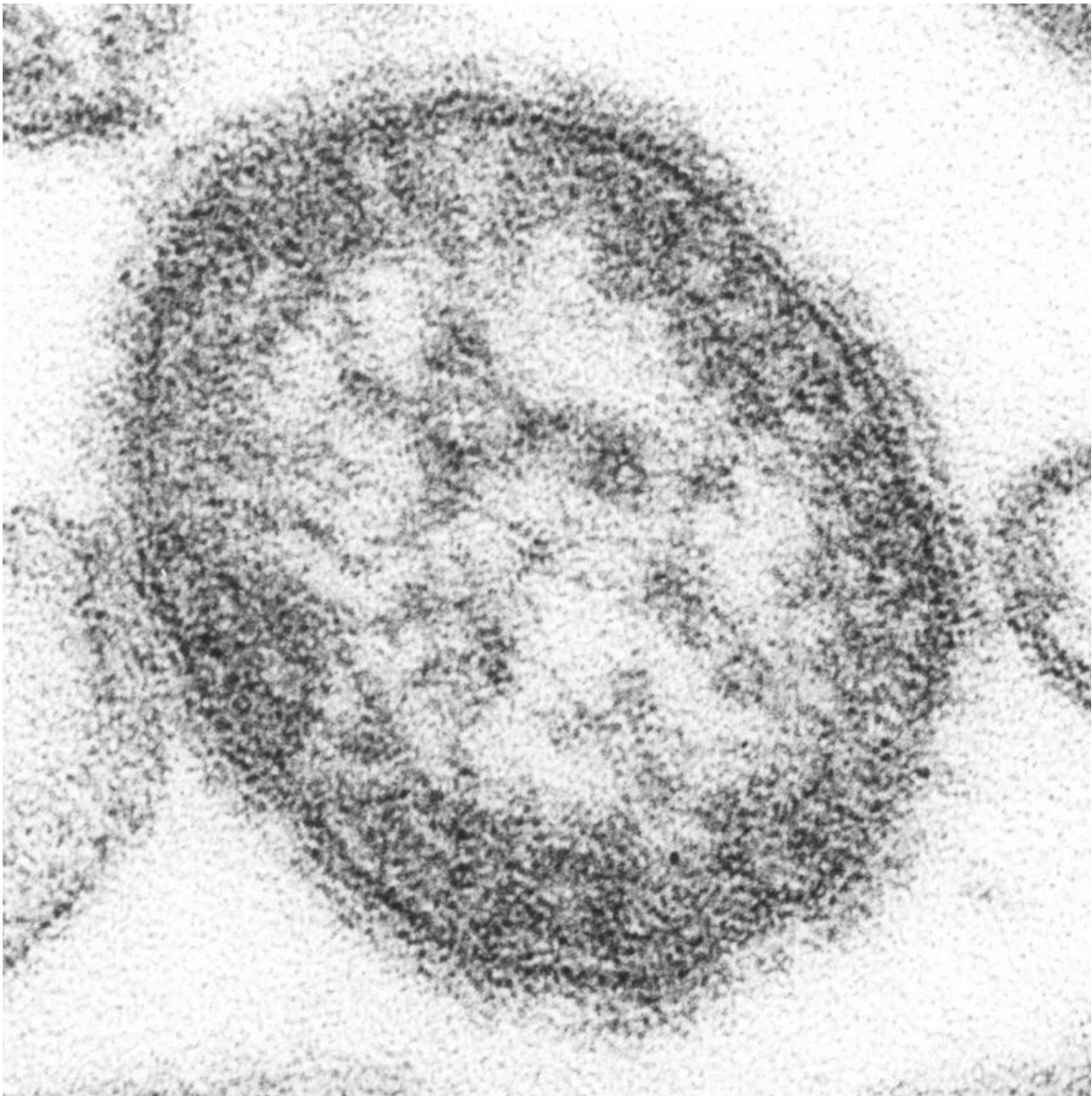


Disneyland visitor had measles, may have exposed others

October 23 2019



An electron micrograph of the measles virus. Credit: CDC/ Courtesy of Cynthia S. Goldsmith

Los Angeles County health officials say a visitor to Disneyland this month may have exposed others to measles.

The Department of Public Health says a county resident with a confirmed case of measles visited the [theme park](#) on Oct. 16 from 9:15 a.m. to 8:35 p.m.

Earlier that morning, the person was at a Starbucks on the west side of Los Angeles.

Health officials says anyone who was at those locations at those times may be at risk of developing measles for up to 21 days.

Those people should check their [medical records](#) to determine if they were immunized or had measles previously.

There have 19 [measles](#) cases among Los Angeles County residents in 2019 and 11 cases among non-residents who traveled through.

© 2019 The Associated Press. All rights reserved.

Citation: Disneyland visitor had measles, may have exposed others (2019, October 23) retrieved 24 April 2024 from

<https://medicalxpress.com/news/2019-10-disneyland-visitor-measles-exposed.html>

This document is subject to copyright. Apart from any fair dealing for the purpose of private study or research, no part may be reproduced without the written permission. The content is provided for information purposes only.