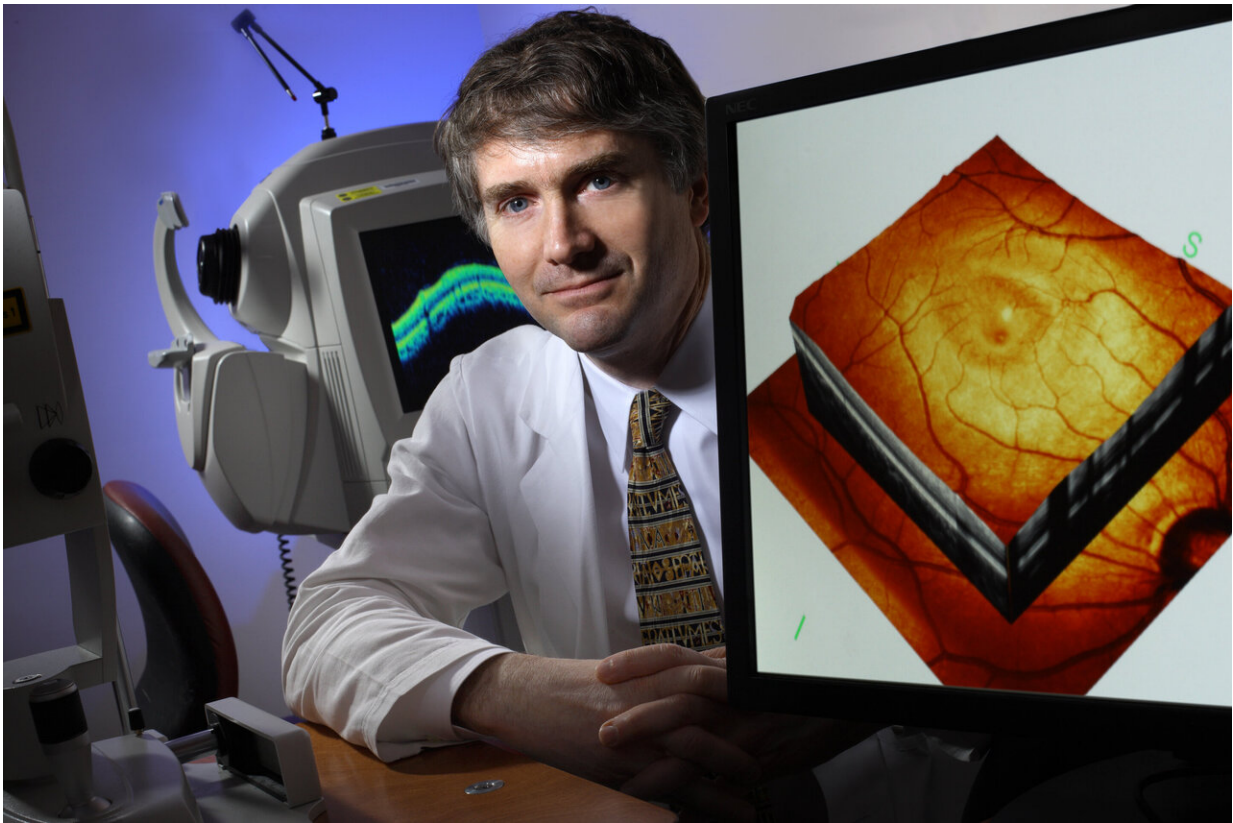


# Potential genetic markers of multiple sclerosis severity

October 31 2019

---



Peter Calabresi from Johns Hopkins Medicine Credit: Johns Hopkins Medicine

In a bid to determine factors linked to the most debilitating forms of multiple sclerosis (MS), Johns Hopkins Medicine researchers say they have identified three so-called "complement system" genes that appear

to play a role in MS-caused vision loss. The researchers were able to single out these genes—known to be integral in the development of the brain and immune systems—by using DNA from MS patients along with high-tech retinal scanning.

If further studies confirm the researcher's findings, reported in the September issue of *Brain*, the investigators say they could serve as markers for monitoring and predicting progression and severity of MS, an unpredictable disorder in which the immune system eats away at protective insulation around nerve cells. This approach, the researchers say, represents the beginning of precision medicine for MS and may ultimately allow designer therapies, as is being done for specific cancers.

In MS, nerve communication breaks down over time between the brain and the rest of the body, causing chronic and/or intermittent muscle spasms, tremors, imbalance, pain, numbness, depression, loss of bladder or bowel control and [vision problems](#). MS is more common in women, and symptoms vary widely.

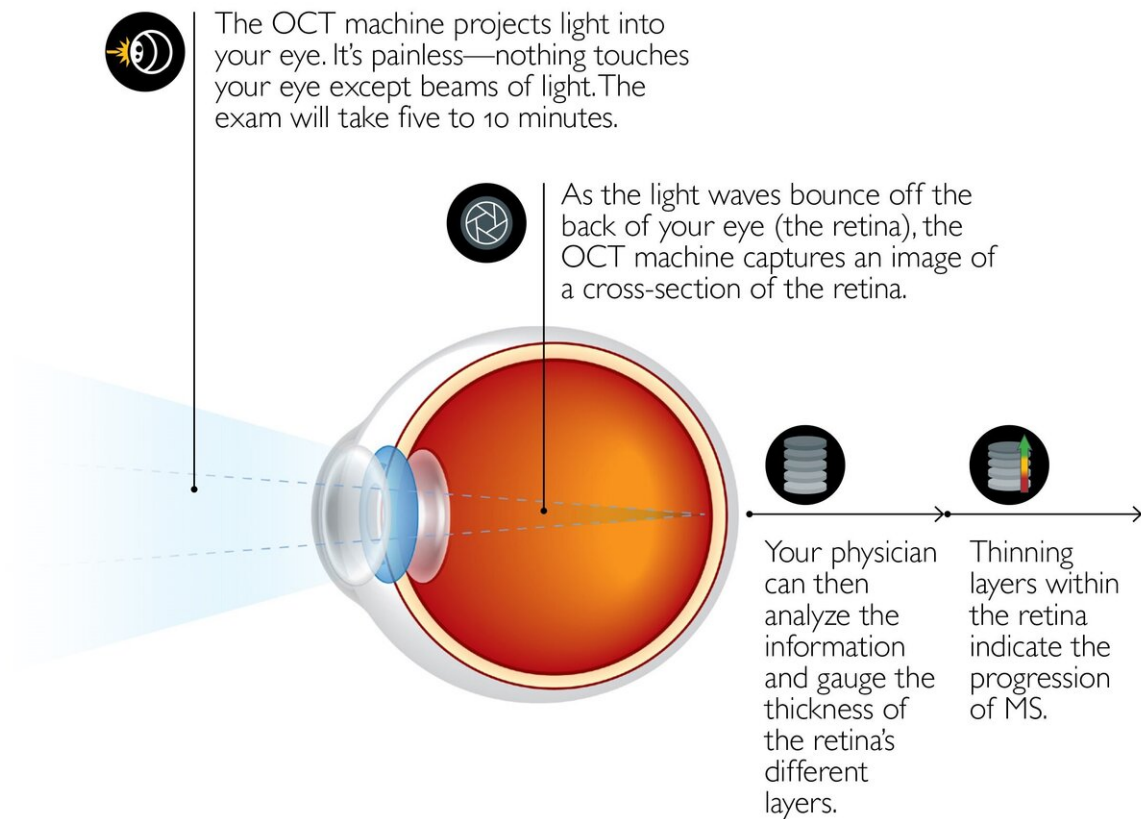
"Although we have treatments for the type of MS where symptoms come on in bursts—called relapsing-remitting MS—we don't have any way to stop the kind of MS in which the nerve cells start to die, known as progressive MS," says Peter Calabresi, M.D., professor of neurology and neuroscience at the Johns Hopkins University School of Medicine and co-director of the Johns Hopkins Precision Medicine Center of Excellence for Multiple Sclerosis. "We believe that our study opens up a new line of investigation targeting complement genes as a potential way to treat disease progression and nerve cell death."

For their study, the researchers used [optical coherence tomography](#)—an imaging technique that allowed the researchers to look at the back of each patient's eyes and assess damage to the nerve cells in the retina—in 374 patients with all types of MS. The patients were an average of 43

years old and mostly women (78%).

The investigators recruited these patients and performed imaging every few years from 2010 to 2017, yielding an average of 4.6 scans per participant over the course of the study. The scans were used to measure thinning of the layer of the nerve cells—known as ganglion cells—in the retina over time. The average rate of deterioration was a loss of 0.32 micrometers of tissue per year in each patient.

## Personalizing Treatment for Patients with MS How OCT Works



Optical coherence tomography. Credit: Johns Hopkins Medicine

Then, using blood samples from the patients to collect their DNA, the researchers hunted for [genetic mutations](#) in those people with the fastest deterioration rates and identified 23 such DNA variations that mapped to the complement gene C3.

Next, to search for genes further linked to vision loss, they performed an analysis of an existing clinical trial group of another 835 people with MS, of whom 74% were women, and whose average age was 40. Each participant underwent periodic vision testing about every year to distinguish their ability to detect contrast—finer and finer shades that distinguish light versus dark. The test requires the person to read five letters in a row as with a typical vision chart test, as well as separate vision charts with faint (low contrast) letters that simulate vision in low light (dusk or dark). However, in this one each row down gets fainter and fainter rather than smaller and smaller.

Using DNA from the [blood samples](#) of these 835 participants, the researchers identified specific genetic changes in two complement genes, C1QA and CR1, linked to those people with the most rapidly declining ability to distinguish letters with less contrast. Patients with genetic changes in the C1QA gene were 71% more likely to develop difficulty detecting visual contrast, whereas those with genetic changes in the CR1 gene were at 40% increased risk for developing a reduced ability to detect contrast.

These complement genes found to be linked with severity of MS [vision loss](#) hold the genetic instructions for making complement proteins.

"Complement proteins have traditionally been thought of as part of the [immune system](#), binding to antibodies and helping them kill infected cells in the body," says Calabresi. "A decade ago, however, other

researchers discovered that complement proteins bind to the connections between neurons and helps them grow in specific directions. But, too much complement was found to causes damage to the nerve cells, eventually killing them. Our findings fit well into this system."

"Our next step will be to repeat these studies in larger populations," says Kathryn Fitzgerald, Sc.D., assistant professor of neurology at the Johns Hopkins University School of Medicine and first author of the published report. "Next, animal studies looking further into the function of complement proteins will also need to be performed so we can figure out the mechanism behind their role in killing [nerve cells](#) in people with MS. From there we can possibly think about how to design new therapies."

**More information:** *Brain* (2019).

[academic.oup.com/brain/article/142/9/2722/5530228](https://academic.oup.com/brain/article/142/9/2722/5530228)

Provided by Johns Hopkins University School of Medicine

Citation: Potential genetic markers of multiple sclerosis severity (2019, October 31) retrieved 27 April 2024 from

<https://medicalxpress.com/news/2019-10-potential-genetic-markers-multiple-sclerosis.html>

<p>This document is subject to copyright. Apart from any fair dealing for the purpose of private study or research, no part may be reproduced without the written permission. The content is provided for information purposes only.</p>
--