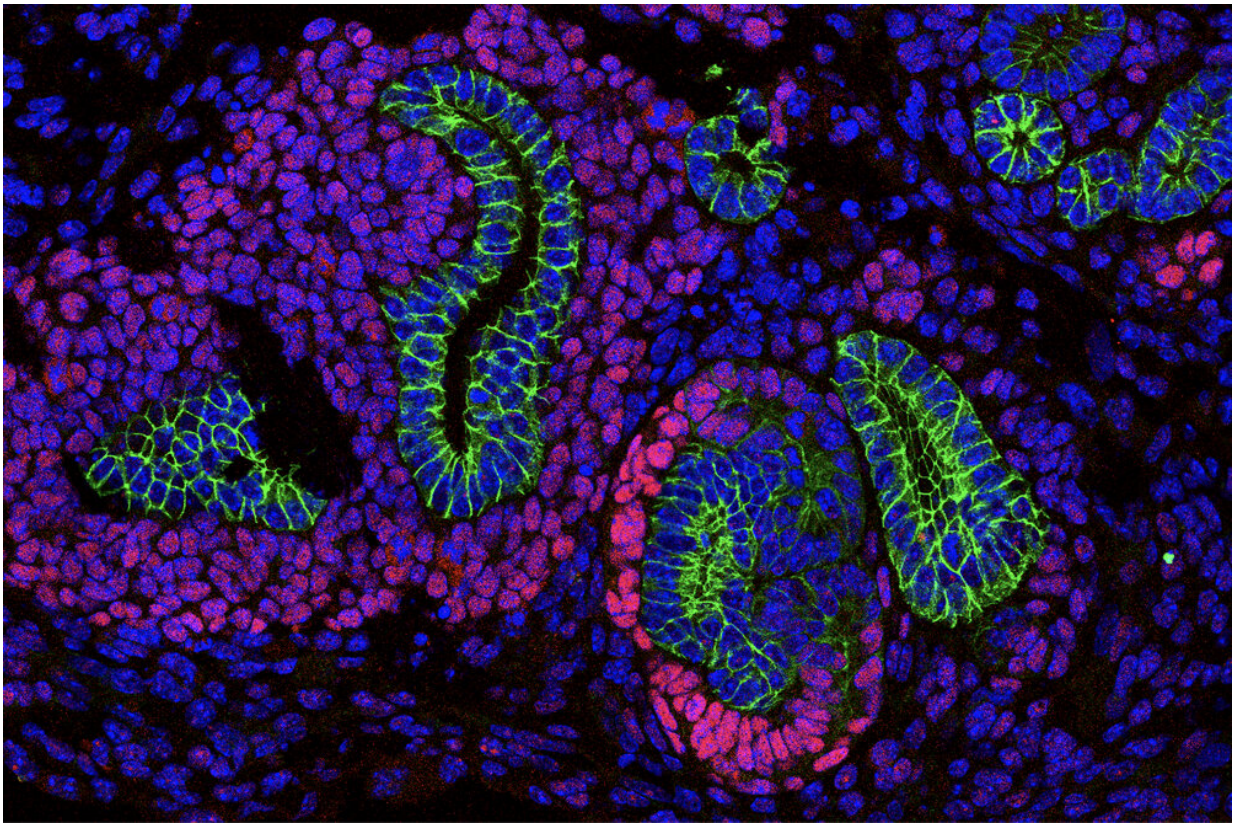


# Scientists discover a new mechanism in childhood kidney cancer

December 18 2019

---



In a developing kidney, a mutant reader protein ENL gives rise to tumor-like structures. Credit: Laboratory of Chromatin Biology and Epigenetics at The Rockefeller University

As an embryo develops, its cells must learn what to do with the

thousands of genes they've been equipped with. That's why each cell comes with a detailed gene-expression manual outlining exactly which genes should be switched on, to what extent, and when.

To execute their respective manuals, the [cells](#) employ so-called chromatin reader proteins that identify which gene is up for expression. Now a new study has found that a problem in this gene-regulatory process may cause [normal cells](#) to turn malignant and produce Wilms' tumor, the most common kidney [cancer](#) in children.

The findings, published in *Nature*, open up new treatment possibilities for the disease, which is currently treated by surgery and chemotherapy.

The findings also raise intriguing questions about other cancer types. The researchers found that the implicated reader [protein](#) causes problems by acquiring a new property and being too active.

"We have never seen this type of mechanism before," says Liling Wan, a former postdoctoral associate in the Rockefeller lab of C. David Allis, and now an assistant professor at the University of Pennsylvania. "It raises the question whether this type of molecular mechanism is also hijacked in other [cancer types](#)."

## Reading too well

A few years ago, Wan discovered that a reader protein called ENL is involved in blood cancer leukemia by activating the cancer-causing genes. Her attention was turned to Wilms' tumor recently, when it was discovered that some people with Wilms' tumor carry [mutations](#) in the gene that codes for ENL.

To see whether these mutations are indeed involved in the formation of Wilms' tumor, Wan and her colleagues introduced the mutations to

mouse [embryonic stem cells](#), and then instructed the cells to develop all the way into kidneys in a petri dish. "Quite strikingly, when you insert the mutation, you start to see a tumor-like structure appearing in the developing kidney, which resembles what we typically see in human Wilms tumor," Wan says.

The team then took a closer look to understand how mutations in ENL turn these cells into tumor cells. In both the cells that carry the mutation and in unaltered cells, they saw ENL proteins land on the same locations in the genome, suggesting there was nothing wrong with the mutant ENL protein's ability to recognize which genes should be expressed. The mutant proteins, however, clumped at these sites, causing the [genes](#) to be constantly transcribed into RNA, the first steps before turning into proteins.

"This abnormal gene expression confuses the cells as to what they want to become," Wan says. "Instead of differentiating into mature kidney cells, they start to proliferate more and get stuck in the immature stage, which leads to the formation of a [tumor](#)."

Having discovered this previously unknown mechanism in cancer, Wan and her colleagues are now asking if it might be possible to revert cancer cells back to normal, for instance with drugs that disrupt ENL's ability to bind to the genome or to form clumps.

"So far we have proof of concept that intervening in any stage of this process can stabilize the gene expression levels and allow the cells to develop normally," Wan says.

**More information:** Impaired cell fate through gain-of-function mutations in a chromatin reader, *Nature* (2019). [DOI: 10.1038/s41586-019-1842-7](#) , [nature.com/articles/s41586-019-1842-7](https://www.nature.com/articles/s41586-019-1842-7)

Provided by Rockefeller University

Citation: Scientists discover a new mechanism in childhood kidney cancer (2019, December 18) retrieved 11 May 2024 from <https://medicalxpress.com/news/2019-12-scientists-mechanism-childhood-kidney-cancer.html>

This document is subject to copyright. Apart from any fair dealing for the purpose of private study or research, no part may be reproduced without the written permission. The content is provided for information purposes only.