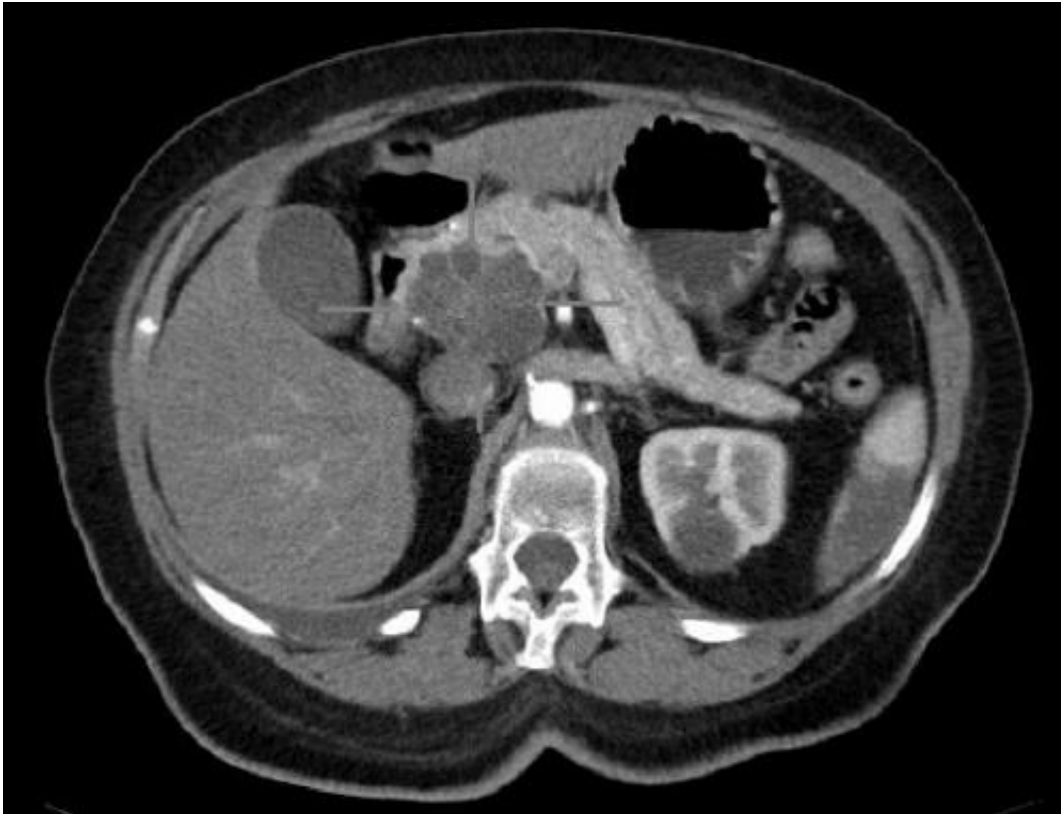


# Does lung damage speed pancreatic cancer?

January 29 2020

---



Axial CT image with i.v. contrast. Macrocystic adenocarcinoma of the pancreatic head. Credit: public domain

Chronic obstructive pulmonary disease or COPD is associated with higher rates of many cancers, including lung, esophagus, colon, bladder and breast cancer. Often a result of many years of smoking, the disease makes it hard to breathe, leaving patients with lower levels of oxygen and higher levels of carbon dioxide in their blood. Low oxygen, called

hypoxia, is a known feature of the pancreatic cancer microenvironment and a contributor to tumor aggressiveness and resistance to therapy. However, the impact of high CO<sub>2</sub> levels on pancreatic cancer has been considerably less studied.

Recent work from the Division of Surgical Research in the Jefferson Pancreas, Biliary, and Related Cancer Center demonstrates that CO<sub>2</sub> drives both the aggressiveness of pancreatic tumor cells and their resistance to treatment. The research findings were published as an "article in press" on the website of the *Journal of the American College of Surgeons* on January 29th, ahead of print, and offers the possibility of correcting these levels prior to treatment.

"Patients with these [respiratory diseases](#) usually start to accumulate excess CO<sub>2</sub> in their bodies before they develop symptomatic lack of oxygen," says first author Avinoam Nevler, MD, a researcher with the Sidney Kimmel Cancer Center (SKCC) - Jefferson Health, and at the department of surgery. "If carbon dioxide indeed contributes to disease progression, we may have an opportunity to improve treatment response not only by focusing on oxygen, but by normalizing carbon dioxide levels in patients as well."

Dr. Nevler, together with Ph.D. candidate Samantha Brown and senior authors Jonathan Brody, Ph.D., co-leader of the SKCC GI Cancer Program, and Charles Yeo, MD, Chair of the Department of Surgery and others looked at both pancreatic tumor cell lines in the lab and historical patient data for associations between obstructive pulmonary diseases and [pancreatic cancer](#).

Earlier research had shown that the pancreatic tumor microenvironment harbors increased levels of CO<sub>2</sub>. Here, the team showed that increasing the CO<sub>2</sub> in cell cultures to levels observed in pulmonary patients was enough to increase their growth and aggressiveness. When these high-

CO<sub>2</sub>-cultured cells were then treated with common chemotherapeutic agents and radiation therapy, they showed increased resistance compared to cells cultured in normal CO<sub>2</sub> conditions.

The researchers also looked at whether they could see the same relationship in people. Dr. Nevler and colleagues queried pancreatic-[cancer](#) patient surgical records for those who also had a diagnosis of asthma or COPD. Although it was impossible to separate the contribution of CO<sub>2</sub> and oxygen levels in these patients, the researchers did see that of the 578 patients they examined, cases with chronic lung disease patients had a 60% increased risk of cancer recurrence.

"Although there's more work to do in order to solidify the association we're seeing," says Dr. Nevler, "what's really exciting is that carbon dioxide levels can be reduced in patients through smoking cessation, using a tailored exercise and respiratory therapy regimen and even changing the diet. We are currently in the process of designing a clinical trial to test these modalities and hopefully extend patients' lives by normalizing CO<sub>2</sub> levels and re-sensitizing the cancers to standard [pancreatic](#) chemotherapy," says Dr. Nevler.

**More information:** Avinoam Nevler, Samantha Z. Brown, David Nauheim, Carla Portocarrero, Jonathan Bassig, Christopher W. Schultz, Grace A. McCarthy, Harish Lavu, Theresa P. Yeo, Charles J. Yeo, and Jonathan R. Brody, "The late effects of smoking: hypercapnia, and element of obstructive respiratory disorders, contributes to pancreatic cancer chemoresistance and progression," *JACS*, 2019.

Provided by Thomas Jefferson University

Citation: Does lung damage speed pancreatic cancer? (2020, January 29) retrieved 23 April 2024 from <https://medicalxpress.com/news/2020-01-lung-pancreatic-cancer.html>

This document is subject to copyright. Apart from any fair dealing for the purpose of private study or research, no part may be reproduced without the written permission. The content is provided for information purposes only.