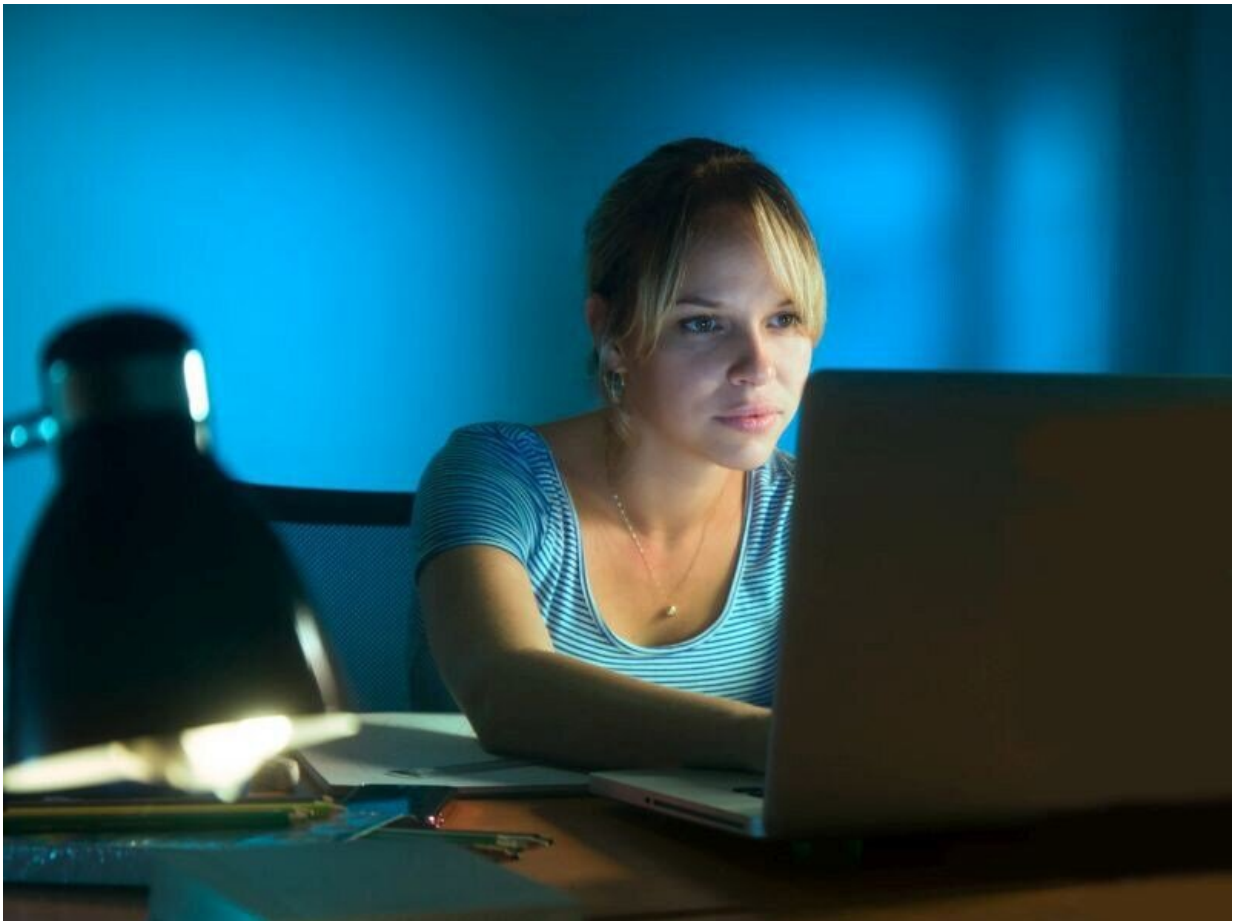


# Telemedicine visits comparable for glycemic control in T1DM

January 13 2020

---



(HealthDay)—Among patients with type 1 diabetes and suboptimal

glycemic control, replacement of an intermediate face-to-face visit with a telemedicine session did not affect outcomes, according to a study published online Jan. 6 in *Diabetes Care*.

Maria S. Ruiz de Adana, M.D., Ph.D., from the Hospital Regional Universitario de Málaga in Spain, and colleagues randomly assigned 379 [patients](#) with type 1 [diabetes](#) and suboptimal metabolic control (glycated hemoglobin [HbA1c]

Citation: Telemedicine visits comparable for glycemic control in T1DM (2020, January 13) retrieved 20 April 2024 from <https://medicalxpress.com/news/2020-01-telemedicine-glycemic-t1dm.html>

This document is subject to copyright. Apart from any fair dealing for the purpose of private study or research, no part may be reproduced without the written permission. The content is provided for information purposes only.