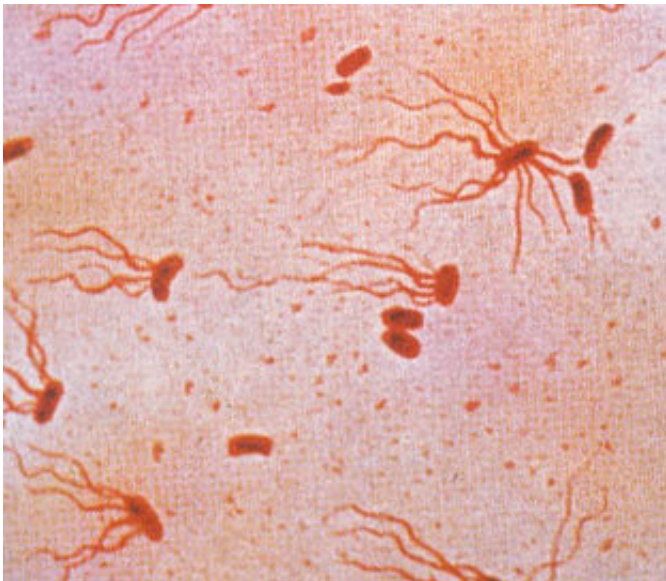


Study finds key mechanism for how typhoid bacteria infects

February 25 2020



Salmonella typhi. Credit: Wikipedia

A new study has uncovered key details for how the Salmonella bacteria that causes typhoid fever identifies a host's immune cells and delivers toxins that disrupt the immune system and allow the pathogen to spread.

The findings, published Feb. 21 in the journal *PLOS Pathogens*, provide new directions for developing treatments for [typhoid fever](#).

The Salmonella enterica serovar Typhi bacteria that causes the fever annually infects up to 21 million people worldwide and close to 6,000

people in the United States, according to the Centers for Disease Control and Prevention. The disease is most common in areas with poor sanitation and unsafe water and food, including South Asia, and especially Pakistan, India and Bangladesh.

The study identifies three subunits on a typhoid toxin protein, one of which is key for delivering the toxin into host cells.

"Typhoid fever is life-threatening but the underlying pathogenic mechanisms are not well understood," said Jeongmin Song, assistant professor of microbiology and immunology in the College of Veterinary Medicine. Tri Nguyen and Sohyoung Lee, both postdoctoral researchers in Song's lab, are co-first authors of the study.

"Here we show that one of the proteins secreted by the typhoid bacteria plays an important role for this pathogenic mechanism," Song said.

The study focuses on a toxin, a protein compound secreted by *S. Typhi* that helps the bacteria evade the host's [immune response](#). This toxin consists of three protein subunits that form a complex.

Two of the subunits, called 'A' subunits, are enzymes; after entering host immune cells, they disrupt immune responses.

A third 'B' subunit recognizes and binds to specific target sugars on the host immune cell's surface, which initiates a process whereby the toxin enters the cell.

The study's authors found that the bacterial B subunit recognizes and attaches to the sugars, known as trisaccharides, on the membranes of [immune cells](#). A trisaccharide called N-acetylneuraminic acid comes in unmodified and modified forms: The B subunit attaches to the unmodified form, but it has a higher affinity to the modified form. Once

attached, the toxin gains entry into the cell.

Once inside an immune cell, also known as a white blood cell, the two enzymatic subunits work to disable the cell's innate immune response, which is the body's immediate and general response when a pathogen is detected. Disabling the innate immune response limits the body's adaptive immune response development, where cells have a memory of a prior infection and launch an attack if the pathogen returns.

The findings open the door to develop small molecules that block the high affinity trisaccharides and inhibit the toxin from binding to and entering the target cell.

"We are not saying this is all we should know," Song said, "but this typhoid toxin is essential in this important pathogenic mechanism behind typhoid fever."

More information: Tri Nguyen et al, The role of 9-O-acetylated glycan receptor moieties in the typhoid toxin binding and intoxication, *PLOS Pathogens* (2020). [DOI: 10.1371/journal.ppat.1008336](https://doi.org/10.1371/journal.ppat.1008336)

Provided by Cornell University

Citation: Study finds key mechanism for how typhoid bacteria infects (2020, February 25) retrieved 19 April 2024 from <https://medicalxpress.com/news/2020-02-key-mechanism-typhoid-bacteria-infects.html>

This document is subject to copyright. Apart from any fair dealing for the purpose of private study or research, no part may be reproduced without the written permission. The content is provided for information purposes only.