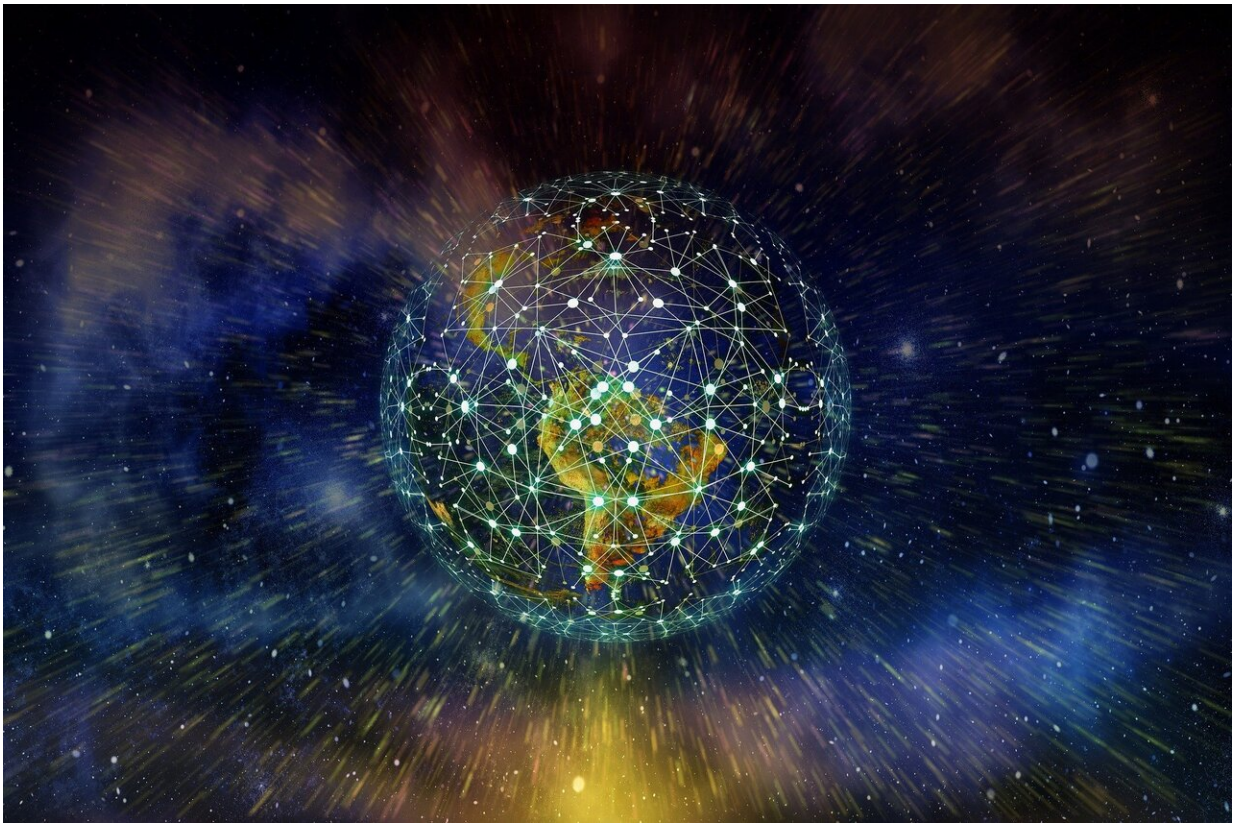


# Coronavirus modeling shows spread remains dangerously high globally

March 19 2020, by Katie Oakley

---



Credit: CC0 Public Domain

The reproduction number of the novel coronavirus is still at a dangerously high level globally, requiring greater public health interventions, according to data analyzed by a group including associate

professor George Mohler from the School of Science at IUPUI.

With [data being collected by researchers at Johns Hopkins University](#), Mohler and his colleagues are using statistical models to determine a dynamic reproduction number of the virus.

"The reproduction number,  $R$ , of a virus is defined as the average number of people an infected person then infects. It has been reported that COVID-19 has a  $R$  value around 2, but the reproduction number can vary over time, and China was able to bring it down to 0.4 with [public health interventions](#)." Mohler said.

"Globally, the overall number was around two; it came down below one, but it is now back to two. This means greater public health interventions are needed around the world."

While the worldwide  $R$  number declined as a result of public health interventions undertaken in China, it increased as the virus spread in parts of the world where large-scale public [health](#) efforts were not in place.

Around Jan. 22, when the Johns Hopkins [data](#) collection began, the global reproduction number was two before dipping below one in mid-February. By the end of February, it was back above 1, and on March 3 it was back above 2. Until the [reproduction](#) number returns under 1, the coronavirus will continue to spread according to researchers.

Mohler and his colleagues plan to continue their analysis on the data as it comes in, especially for the U.S.

"The big takeaway is that social distancing, isolation, and quarantine can have major impact on the transmission of a novel respiratory virus like COVID-19." said Daniel Sledge, an associate professor of political

science at the University of Texas at Arlington, who collaborated on the analysis.

**More information:** Analyzing the World-Wide Impact of Public Health Interventions on the Transmission Dynamics of COVID-19. [DOI: 10.13140/RG.2.2.32817.12642](https://doi.org/10.13140/RG.2.2.32817.12642)

Provided by Indiana University

Citation: Coronavirus modeling shows spread remains dangerously high globally (2020, March 19) retrieved 20 April 2024 from <https://medicalxpress.com/news/2020-03-coronavirus-dangerously-high-globally.html>

This document is subject to copyright. Apart from any fair dealing for the purpose of private study or research, no part may be reproduced without the written permission. The content is provided for information purposes only.