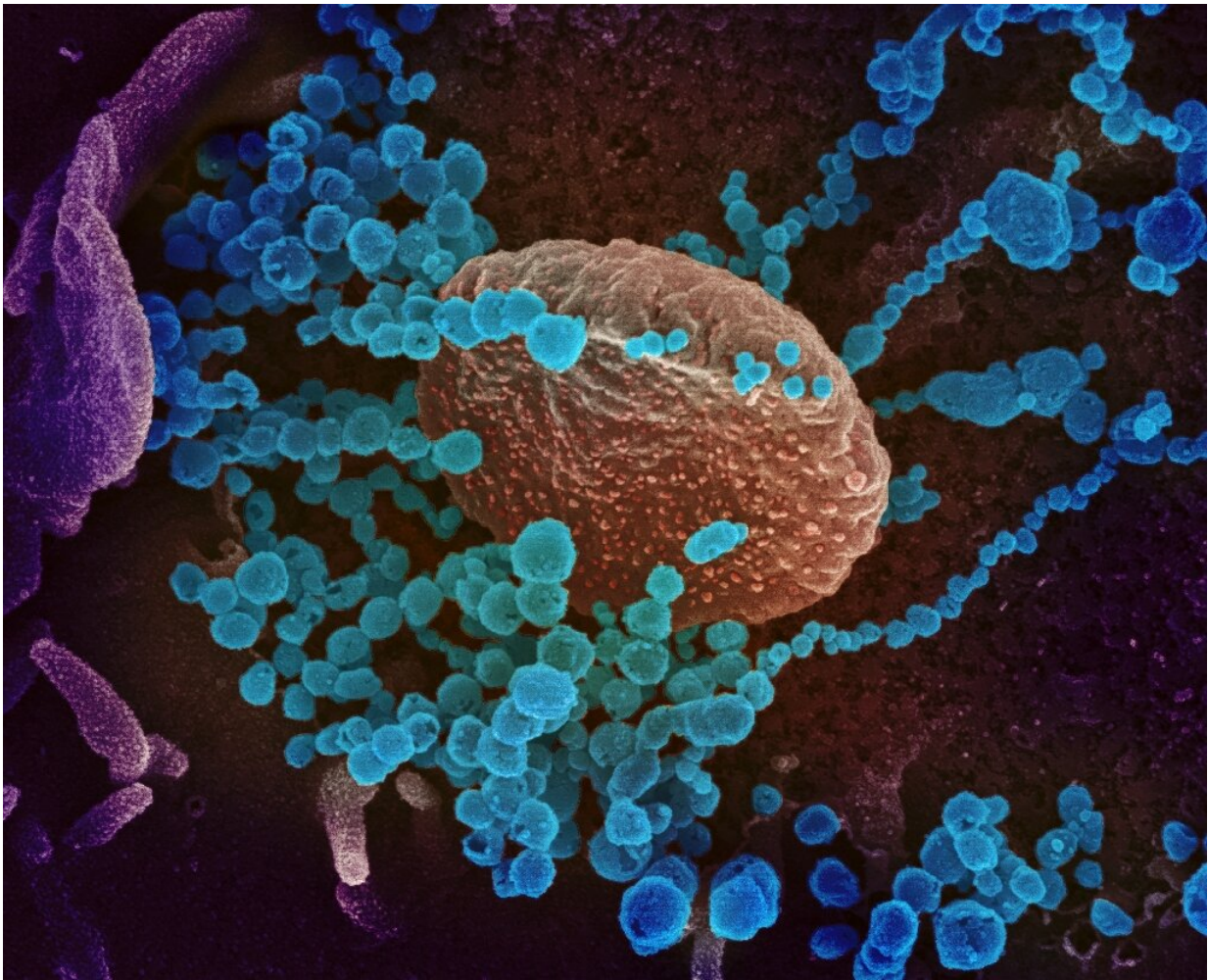


# Doctors map body's COVID-19 immune response: study

March 17 2020, by Patrick Galey and Marlowe Hood

---



Authors of the study, say it is the first time experts have mapped the body's general immune response to the new disease

Researchers in Australia said Tuesday they had mapped the body's immune response to the novel coronavirus, in a potential breakthrough in the fight against the global killer.

A team of scientists were able to test blood samples from a patient who had contracted COVID-19 and was hospitalised with moderate symptoms.

Authors of the study, published in the journal *Nature Medicine*, said it was the first time experts had mapped the body's general immune response to the new [disease](#).

"We saw a really robust immune response that preceded clinical recovery," Katherine Kedzierska, from the University of Melbourne's Peter Doherty Institute for Infection and Immunity, told AFP.

"We noted an immune response but she was visually still unwell, and three days later the patient recovered."

Researchers are in a race against time to try to find a vaccine for the novel [coronavirus](#), which as of 0900 GMT Tuesday has registered more than 180,000 confirmed infections and over 7,000 deaths.

Keszierska said her team's research was "an important step in understanding recovery from COVID-19.

"We have verifiable results in more patients with moderate disease. Now we can ask the question: what is different or missing in people who are fatally ill?"

She said the findings had two [practical applications](#).

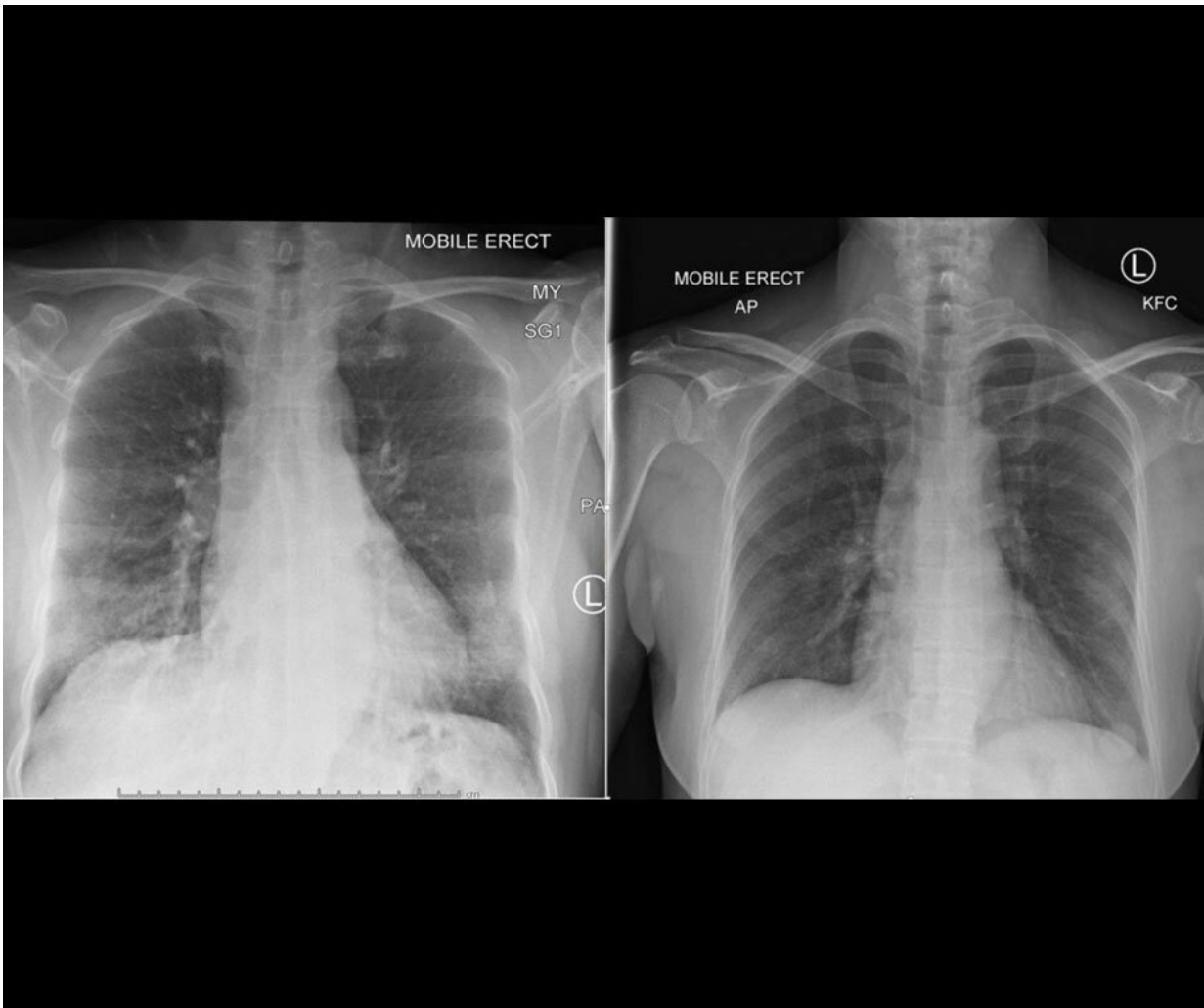
First, it will help virologists develop a vaccine because the goal in

vaccination is to replicate the body's natural immune response to viruses.

The team identified four distinct immune-cell populations in the COVID-19 patient's blood as she underwent recovery.

Kedzierska said these were "very similar to what we see in patients with influenza".

Although it kills hundreds of thousands of people annually, a broadly effective vaccine exists against influenza.



Researchers were able to dissect the immune response leading to successful recovery from COVID-19, which might be the secret to finding an effective vaccine. Credit: Doherty Institute

## **Immunity 'markers'**

The second practical application is screening, said Kedzierska.

Their observations could also help [health authorities](#) make better predictions in future disease outbreaks about who is most at risk.

These [immune system](#) "markers" could in theory predict with greater accuracy which patients are likely to have mild symptoms and which are at risk of dying.

The majority of COVID-19 deaths occur in patients who are elderly or have existing medical conditions, such as heart disease and diabetes.

Children, on the other hand, appear to show few or no symptoms. Kedzierska said more research was needed to work out why, but the immune system does naturally slow down as people age.

Sharon Lewin, director of the Doherty Institute and one of the world's leading infectious diseases experts, told AFP that the study results were promising.

"It shows that the body makes a very good and powerful [immune response](#) to virus and it is associated with symptom clearing," she said.

"Hopefully now we can fish out those antibodies and grow them up to

scale," she said.

**More information:** Irani Thevarajan et al. Breadth of concomitant immune responses prior to patient recovery: a case report of non-severe COVID-19, *Nature Medicine* (2020). [DOI: 10.1038/s41591-020-0819-2](https://doi.org/10.1038/s41591-020-0819-2)

© 2020 AFP

Citation: Doctors map body's COVID-19 immune response: study (2020, March 17) retrieved 18 April 2024 from <https://medicalxpress.com/news/2020-03-doctors-body-covid-immune-response.html>

This document is subject to copyright. Apart from any fair dealing for the purpose of private study or research, no part may be reproduced without the written permission. The content is provided for information purposes only.