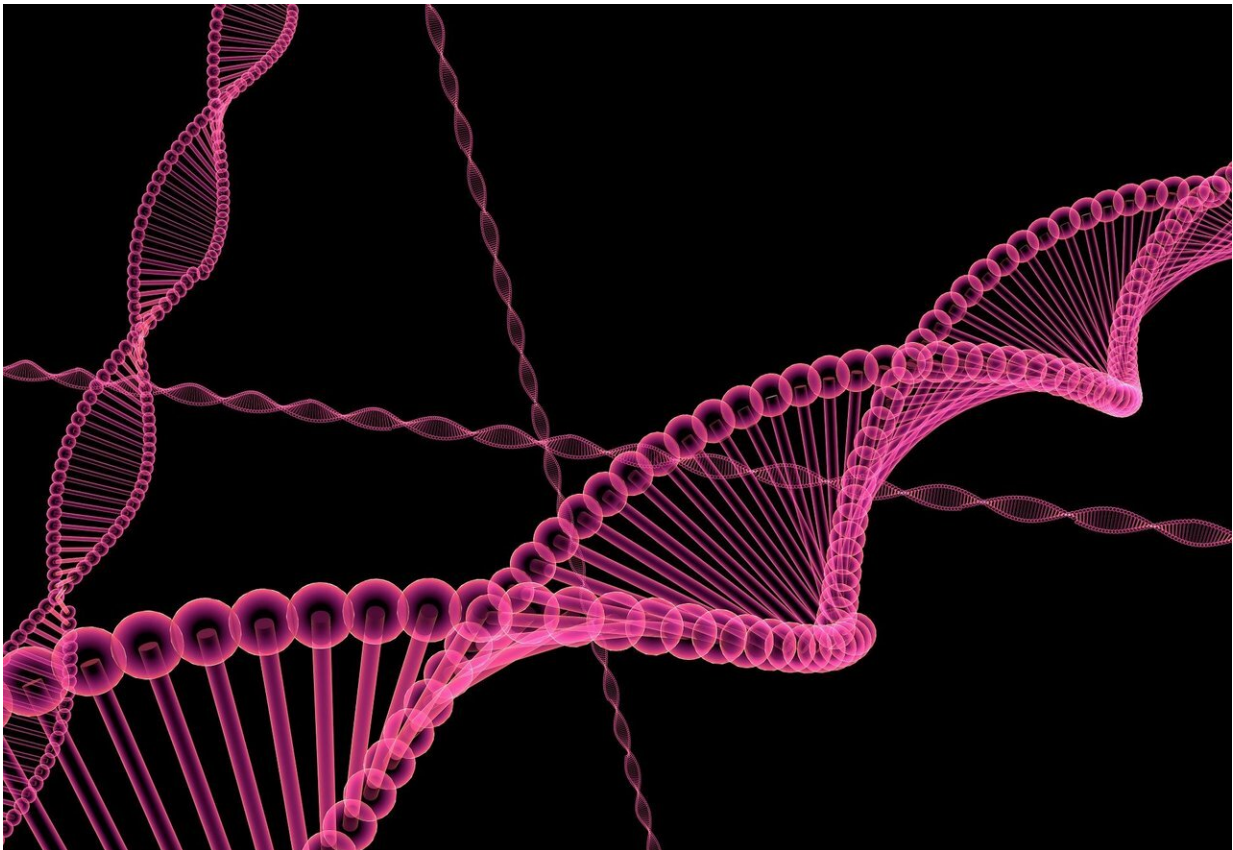


# Using machine learning to detect lung cancer DNA in blood

March 26 2020, by Bob Yirka

---



Credit: CC0 Public Domain

A large team of researchers affiliated with multiple institutions across the U.S. has found that it might be possible to use machine learning to detect early-stage lung cancer in human patients. In their paper published

in the journal *Nature*, the group describes their work, which involved testing machine learning systems and their ability to find circulating tumor DNA (ctDNA) in blood samples.

Lung cancer is one of the deadliest of the cancers, and like many others, the earlier it is found, the better chance of survival a patient has.

Unfortunately, the only way to detect it currently is via CT scans, which are not only costly, but have high false positive rates. For that reason, [medical researchers](#) have been looking into the possibility of developing a [blood test](#) that can detect [lung cancer](#) in its early stages. Such blood tests would involve scanning samples of blood for bits of ctDNA—a daunting prospect for human lab technicians. For that reason, the researchers with this new effort looked to machine learning—prior studies have shown it to be useful in identifying early stage breast and other cancers.

In their work, the researchers trained a [machine learning](#) model on data typically associated with a type of lung cancer known as non-small-cell lung cancer. Once trained, the model was programmed to provide an estimate of lung cancer in a given patient.

During testing, the system found 63 percent of tumors for stage 1 lung cancer patients—not as good as CT scans, but possibly good enough to serve as an initial screen for people who are considered to be at high risk of developing lung cancer. The researchers note that currently, many such patients are not being screened at all. If a patient received a positive result, they would then be advised to undergo more sophisticated testing. The researchers further note that such screening could conceivably extend the lives of between 600 and 1,200 people each year. They also believe the approach could be used to test for other types of cancers, as well.

**More information:** Jacob J. Chabon et al. Integrating genomic

features for non-invasive early lung cancer detection, *Nature* (2020).  
[DOI: 10.1038/s41586-020-2140-0](https://doi.org/10.1038/s41586-020-2140-0)

© 2020 Science X Network

Citation: Using machine learning to detect lung cancer DNA in blood (2020, March 26) retrieved 5 May 2024 from <https://medicalxpress.com/news/2020-03-machine-lung-cancer-dna-blood.html>

This document is subject to copyright. Apart from any fair dealing for the purpose of private study or research, no part may be reproduced without the written permission. The content is provided for information purposes only.