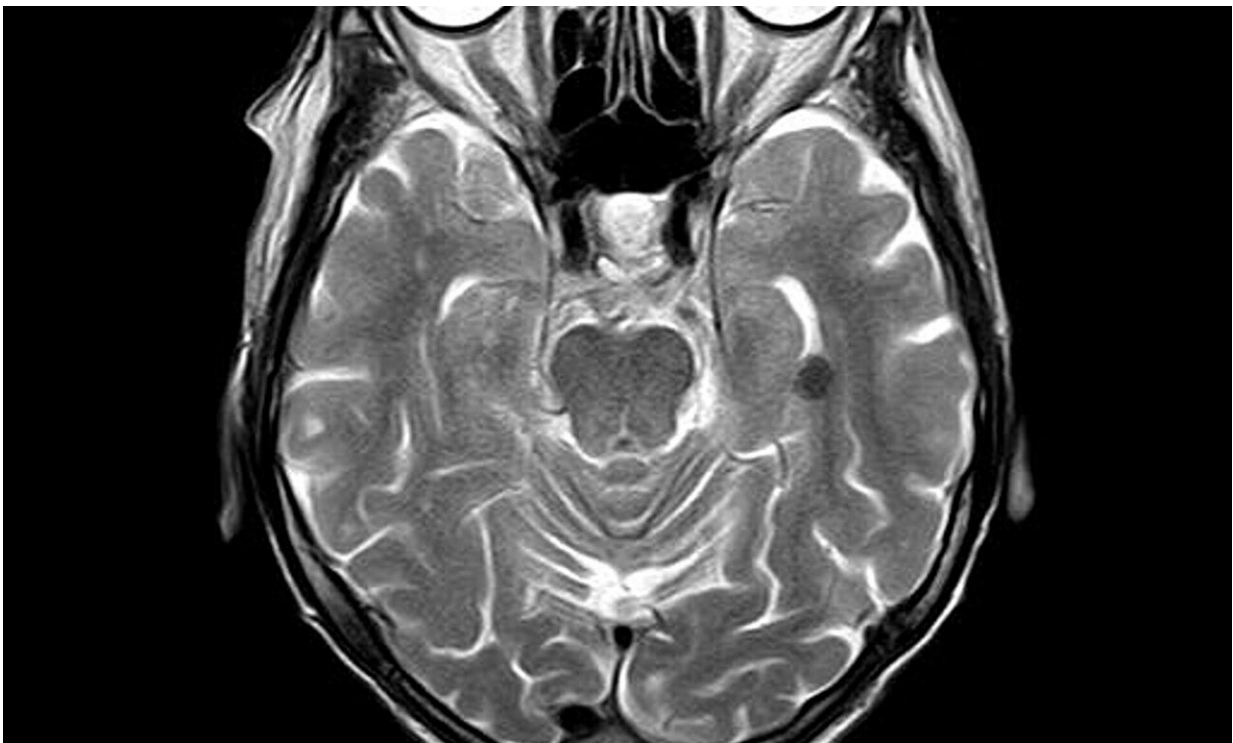


Specialized MRI sensor reveals the neurotransmitter's influence on neural activity throughout the brain

April 1 2020



Credit: CC0 Public Domain

Using a specialized magnetic resonance imaging (MRI) sensor, MIT neuroscientists have discovered how dopamine released deep within the brain influences both nearby and distant brain regions.

Dopamine plays many roles in the [brain](#), most notably related to movement, motivation, and reinforcement of behavior. However, until now it has been difficult to study precisely how a flood of [dopamine](#) affects [neural activity](#) throughout the brain. Using their new technique, the MIT team found that dopamine appears to exert significant effects in two regions of the brain's cortex, including the motor cortex.

"There has been a lot of work on the immediate cellular consequences of dopamine release, but here what we're looking at are the consequences of what dopamine is doing on a more brain-wide level," says Alan Jasanoff, an MIT professor of biological engineering, brain and cognitive sciences, and nuclear science and engineering. Jasanoff is also an associate member of MIT's McGovern Institute for Brain Research and the senior author of the study.

The MIT team found that in addition to the motor cortex, the remote brain area most affected by dopamine is the insular cortex. This region is critical for many cognitive functions related to perception of the body's internal states, including physical and emotional states.

MIT postdoc Nan Li is the lead author of the study, which appears today in *Nature*.

Tracking dopamine

Like other neurotransmitters, dopamine helps neurons to communicate with each other over short distances. Dopamine holds particular interest for neuroscientists because of its role in motivation, addiction, and several neurodegenerative disorders, including Parkinson's disease. Most of the brain's dopamine is produced in the midbrain by neurons that connect to the striatum, where the dopamine is released.

For many years, Jasanoff's lab has been developing tools to study how

molecular phenomena such as neurotransmitter release affect brain-wide functions. At the molecular scale, existing techniques can reveal how dopamine affects individual cells, and at the scale of the entire brain, functional [magnetic resonance](#) imaging (fMRI) can reveal how active a particular brain region is. However, it has been difficult for neuroscientists to determine how single-cell activity and brain-wide function are linked.

"There have been very few brain-wide studies of dopaminergic function or really any neurochemical function, in large part because the tools aren't there," Jasanoff says. "We're trying to fill in the gaps."

About 10 years ago, his lab developed MRI sensors that consist of magnetic proteins that can bind to dopamine. When this binding occurs, the sensors' magnetic interactions with surrounding tissue weaken, dimming the tissue's MRI signal. This allows researchers to continuously monitor dopamine levels in a specific part of the brain.

In their new study, Li and Jasanoff set out to analyze how dopamine released in the striatum of rats influences neural function both locally and in other brain regions. First, they injected their dopamine sensors into the striatum, which is located deep within the brain and plays an important role in controlling movement. Then they electrically stimulated a part of the brain called the lateral hypothalamus, which is a common experimental technique for rewarding behavior and inducing the brain to produce dopamine.

Then, the researchers used their dopamine sensor to measure dopamine levels throughout the striatum. They also performed traditional fMRI to measure neural activity in each part of the striatum. To their surprise, they found that high dopamine concentrations did not make neurons more active. However, higher dopamine levels did make the neurons remain active for a longer period of time.

"When dopamine was released, there was a longer duration of activity, suggesting a longer response to the reward," Jasanoff says. "That may have something to do with how dopamine promotes learning, which is one of its key functions."

Long-range effects

After analyzing dopamine release in the striatum, the researchers set out to determine this dopamine might affect more distant locations in the brain. To do that, they performed traditional fMRI imaging on the brain while also mapping dopamine release in the striatum. "By combining these techniques we could probe these phenomena in a way that hasn't been done before," Jasanoff says.

The regions that showed the biggest surges in activity in response to dopamine were the [motor cortex](#) and the insular cortex. If confirmed in additional studies, the findings could help researchers understand the effects of dopamine in the human brain, including its roles in addiction and learning.

"Our results could lead to biomarkers that could be seen in fMRI data, and these correlates of dopaminergic function could be useful for analyzing animal and human fMRI," Jasanoff says.

More information: Local and global consequences of reward-evoked striatal dopamine release, *Nature* (2020). [DOI: 10.1038/s41586-020-2158-3](#) , [nature.com/articles/s41586-020-2158-3](https://www.nature.com/articles/s41586-020-2158-3)

Provided by Massachusetts Institute of Technology

Citation: Specialized MRI sensor reveals the neurotransmitter's influence on neural activity throughout the brain (2020, April 1) retrieved 28 April 2024 from <https://medicalxpress.com/news/2020-04-specialized-mri-sensor-reveals-neurotransmitter.html>

This document is subject to copyright. Apart from any fair dealing for the purpose of private study or research, no part may be reproduced without the written permission. The content is provided for information purposes only.