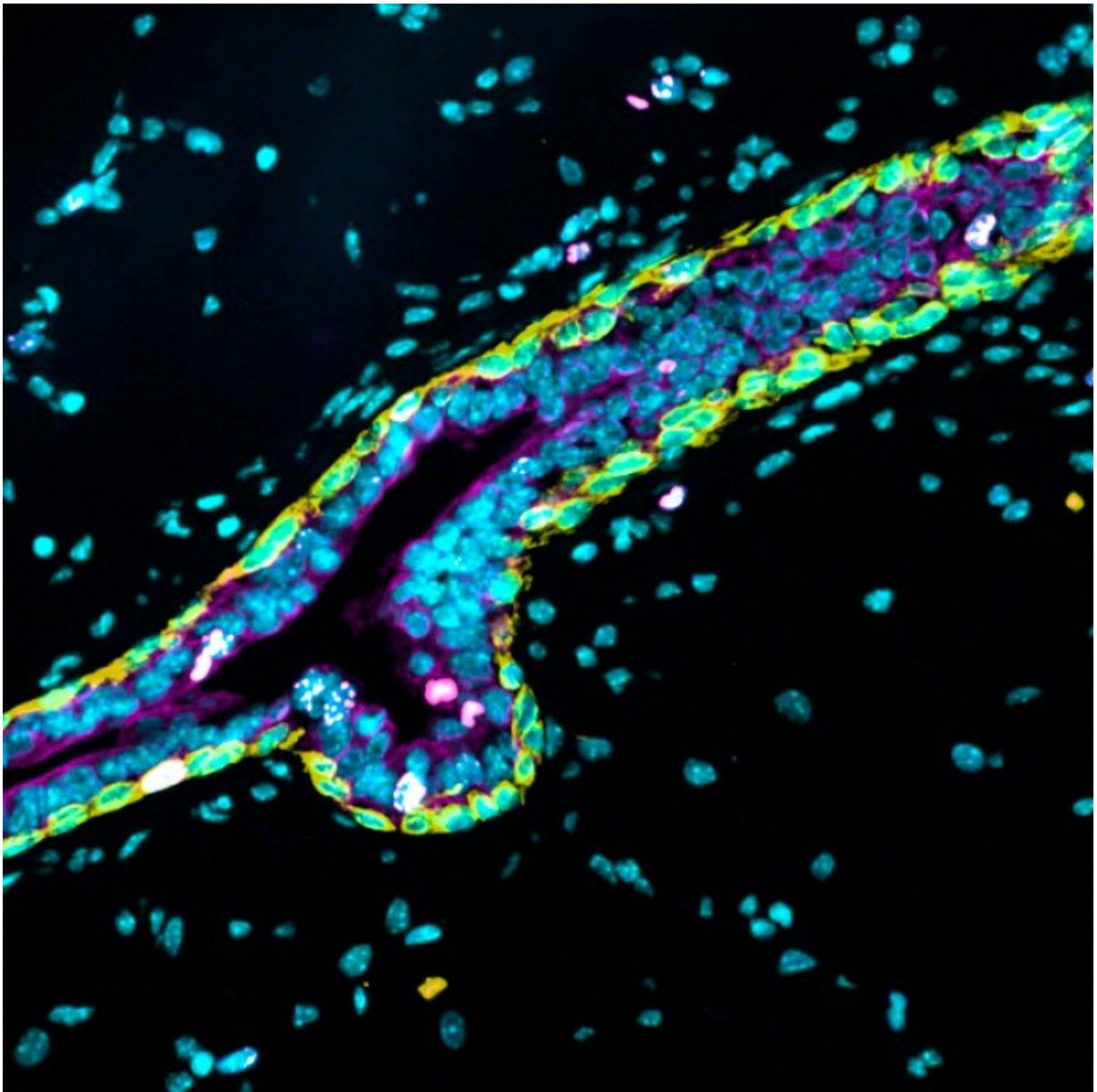


# Identification of a determining factor in luminal cancer cells

May 18 2020

---



Immunofluorescence of a mouse mammary gland duct (IRB Barcelona). Credit: Institute for Research in Biomedicine (IRB Barcelona)

The Translational Control of Cell Cycle and Differentiation Lab at IRB Barcelona, led by ICREA researcher Raúl Méndez, has published a study in the journal *Science Advances* that has identified a key factor in the development of luminal breast cancer. Characterised by the expression of estrogen receptors, luminal tumours are the most common subtype of breast cancer. The mammary gland is the only organ in our body to undergo its greatest development after birth, as a result of fluctuations in hormone levels. This makes this gland a good model to study cell differentiation and also the mechanisms that regulate the progression of breast cancer.

"Traditionally, much attention has been devoted to the in-depth study of how hormones regulate the development of the [mammary gland](#) at the transcriptional level, that is, the synthesis of messenger RNA from DNA. In previous work by our group, we had discovered that factors called CPEBs regulate the next step, namely the translation of that messenger RNA into protein. This process is crucial for embryo development, and it is deregulated during the development in tumours other than those in the breast, such as those of the pancreas," explains Méndez.

The IRB Barcelona research team has discovered that CPEB2 is essential for protein synthesis after hormonal stimulation, the latter a process that regulates both the proper development of the mammary gland and the formation of luminal breast tumours.

To this end, the study generated new mouse models in which each of the four members of the CPEB family was inactivated. These models

allowed the researchers to reveal CPEB2 as a key piece in the estrogen signalling pathway. Without this factor, the most important mediators activated through the estrogen receptor are not synthesised and, therefore, the response to hormone receptors decreases.

"The study allows us to affirm that cells proliferate less in the absence of CPEB2. We have seen in vivo that mice genetically engineered not to express CPEB2 are protected against luminal breast cancer," explains Rosa Pascual, first author of the article.

Likewise, the research reveals, using human data, that luminal [breast cancer](#) patients with low expression of CPEB2 have a better prognosis.

In this regard, if the effects detected in mice were replicated in human trials and the side effects were minimal, CPEB2 could provide a new therapeutic target.

Thus, a CPEB2 inhibitor could be a good candidate in combination with current therapies that block the estrogen signalling pathway, or as an alternative for those patients with luminal tumours that are resistant to hormone receptor-based treatments at the transcriptional level.

**More information:** Rosa Pascual et al, The RNA binding protein CPEB2 regulates hormone sensing in mammary gland development and luminal breast cancer, *Science Advances* (2020). [DOI: 10.1126/sciadv.aax3868](https://doi.org/10.1126/sciadv.aax3868)

Provided by Institute for Research in Biomedicine (IRB Barcelona)

Citation: Identification of a determining factor in luminal cancer cells (2020, May 18) retrieved 10 April 2024 from

<https://medicalxpress.com/news/2020-05-identification-factor-luminal-cancer-cells.html>

This document is subject to copyright. Apart from any fair dealing for the purpose of private study or research, no part may be reproduced without the written permission. The content is provided for information purposes only.